

Upper Tollington Park, N4

£825,000

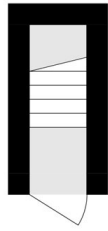
A well-presented three bedroom top floor flat set within a converted Victorian house. The property features a bright open plan kitchen/reception area with wooden flooring throughout and upgraded windows.

Tollington Park sits in the heart of Finsbury Park, providing easy access to local shops, restaurants, schools, parks, and public transportation options, including Finsbury Park station.

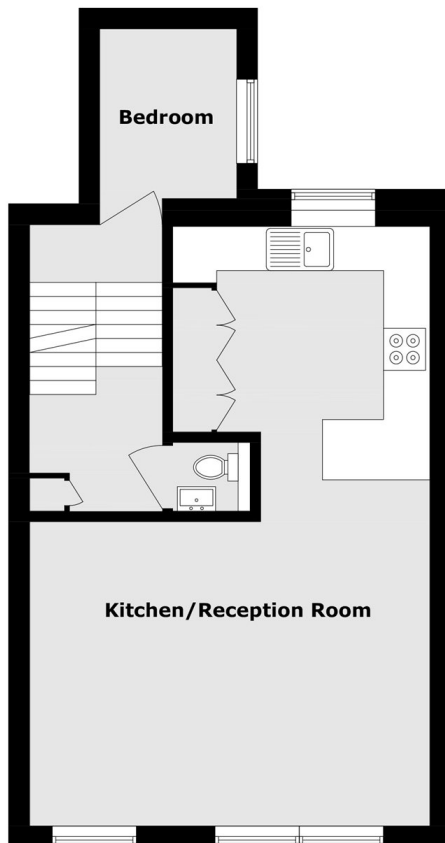
Features

- Three Bedrooms
- Chain Free
- Share of Freehold
- Wooden Floors
- Close to Amenities
- Split Level

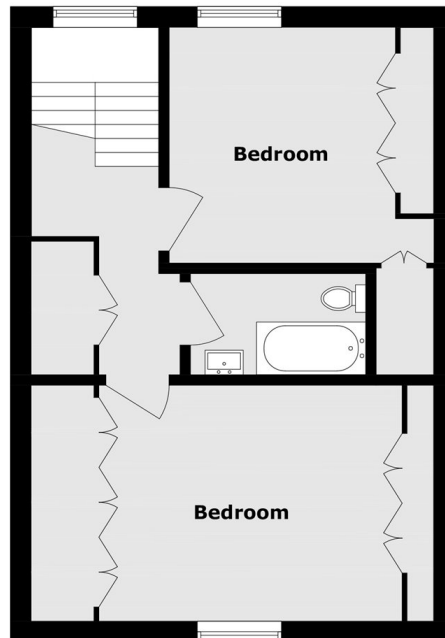
Upper Tollington Park, London, N4



Ground Floor



First Floor



Second Floor