



Queens Crescent, NW5

£325,000

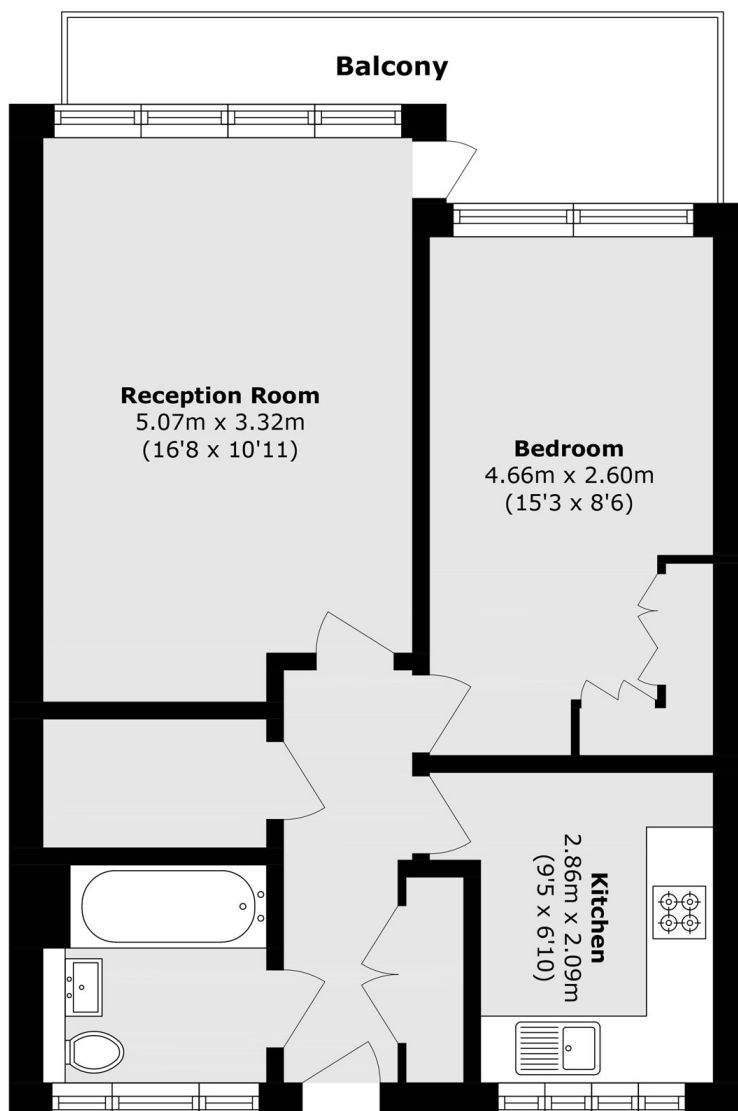
Located in a secure purpose built block, this one double bedroom apartment has a large reception room, a separate modern kitchen, wooden flooring throughout and a private balcony.

Situated on a beautiful tree lined crescent in Kentish Town, Cheriton is within easy reach of excellent transport links, local amenities and the wide open spaces of Hampstead Heath.

Features

- One Double Bedroom
- Separate Kitchen
- Private Balcony
- Leasehold
- Good Condition
- Chain Free

Queens Crescent, London, NW5



Total area (approx.): 48.7 sq. m (524.2 sq. ft)

Balcony area (approx.): 7.1 sq. m (76.4 sq. ft)