



39 Palm Tree Way, Lyminge - CT18 8JN

Guide Price **£395,000**

Palm Tree Way, Lyminge, Folkestone, CT18

Approximate Area = 1169 sq ft / 108.6 sq m

Limited Use Area(s) = 48 sq ft / 4.4 sq m

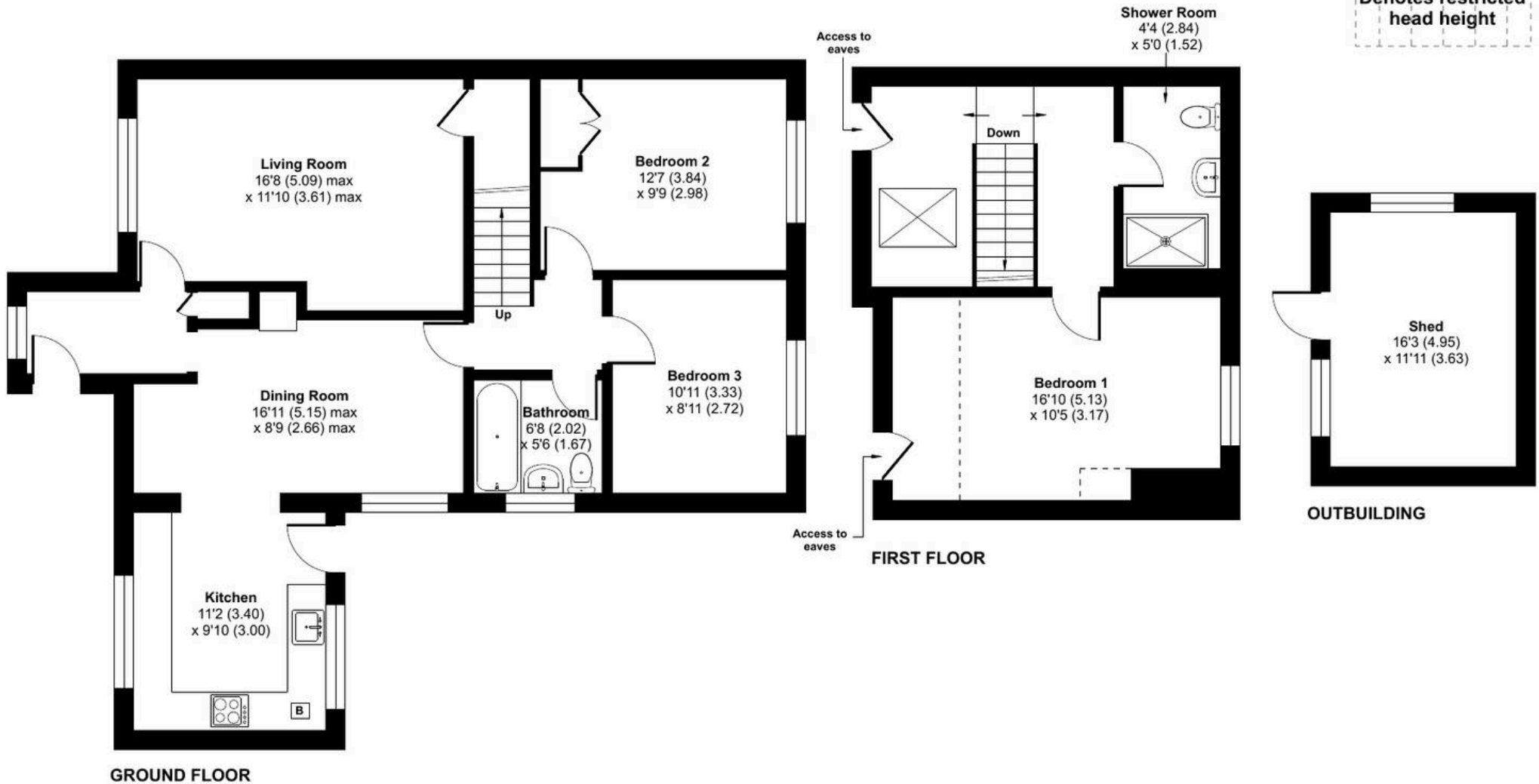
Outbuilding = 124 sq ft / 11.5 sq m

Total = 1341 sq ft / 124.5 sq m

For identification only - Not to scale



Denotes restricted head height





39 Palm Tree Way

Lyminge, Folkestone

Welcome to this beautifully presented three bedroom semi detached chalet bungalow, situated in a popular location within the vibrant village of Lyminge. The ground floor offers an entrance porch, a delightful living room featuring a large picture window that fills the space with natural light, a spacious and well-equipped kitchen open plan to the dining room with ample space for a table and chairs, two bedrooms, and a modern bathroom. Upstairs, the landing area/office space with Velux window, and the main bedroom benefits from an en suite shower room. Outside, the property includes driveway parking and a lawn at the front, along with a particularly attractive well enclosed garden featuring well stocked border beds, sun terrace with pergola over and a large shed to the rear. Offered with no chain, this charming home is ready to move into.

Council Tax band: C

Tenure: Freehold

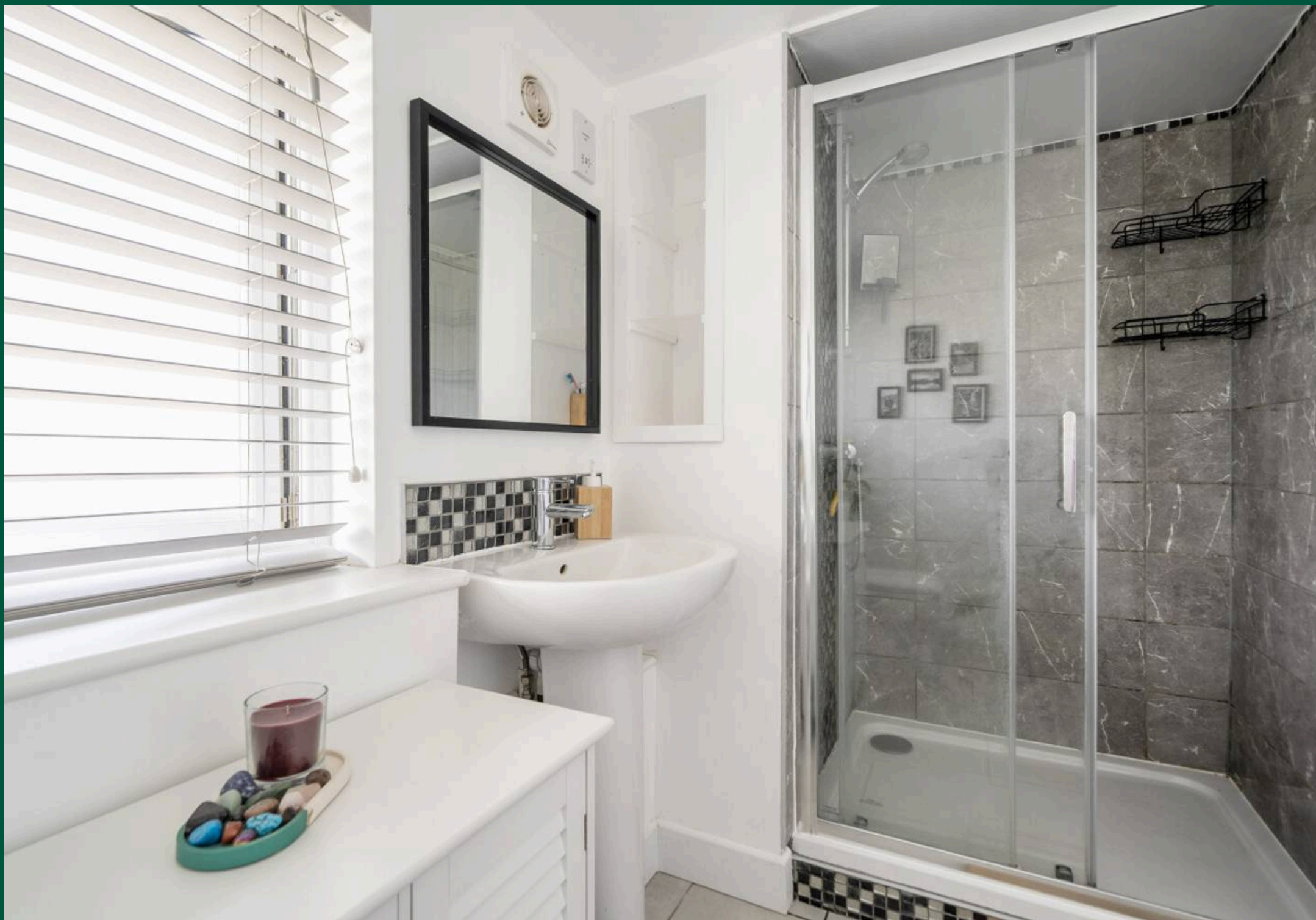
EPC Energy Efficiency Rating: C

EPC Environmental Impact Rating:









Laing Bennett

Laing Bennett Ltd, The Estate Office, 8 Station Road – CT18 8HP

01303 863393 • info@laingbennett.co.uk • www.laingbennett.co.uk/

DISCLAIMER – These details are for guidance only and do not form part of an offer or contract. Measurements are approximate. Laing Bennett Ltd and the Vendor/Landlord accept no liability. Services and appliances are untested. Applicants must make their own checks. Items shown may not be included. No staff have authority to give warranties.