



Radnor Terrace, W14

£1,384 per week



- Split-Level Apartment
- Two Bedrooms

- Two Bathrooms
- Private Patio

- Underground Parking
- Kensington High Street





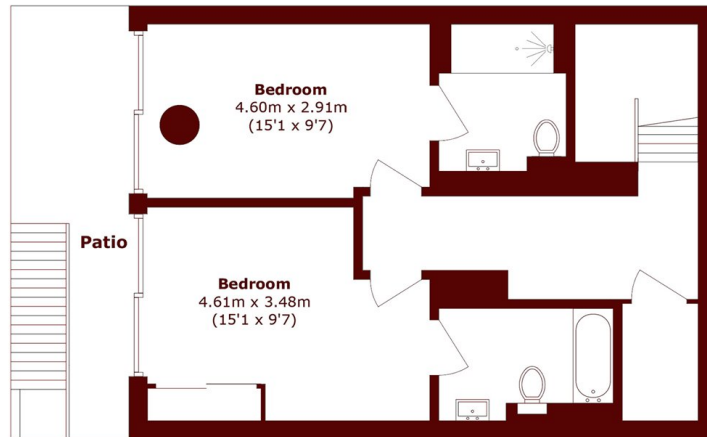
ABOUT THE PROPERTY

Well-presented split-level two-bedroom, two-bathroom apartment with private patio in a secure, portered Kensington High Street development featuring lift, gym, pool, cinema, and underground parking.

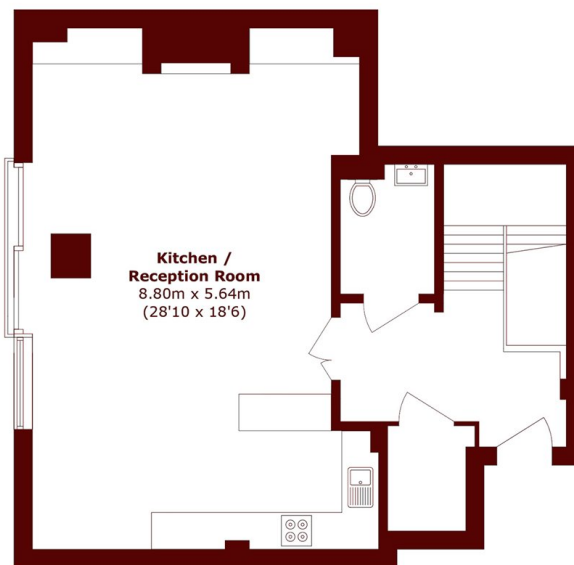
Offering flexible accommodation, this split-level two-bedroom apartment spans the ground and lower ground floors, with wooden floors, two bathrooms with underfloor heating, and a utility room. It also benefits from a gym, pool, cinema, and underground parking.

Bridgeman House is a desirable new development close to the transport links of Kensington Olympia (District & Overground), High Street Kensington (Circle & District lines), Earls Court (District & Piccadilly lines) and Shepherds Bush (Central & Overground). It is also close to the A4 which offers tenants a direct route out of London towards M25 and Heathrow.





Lower Ground Floor



Ground Floor

Total area (approx.): 123.9 sq. m (1333.7 sq. ft)

Marsh & Parsons Kensington

9 Kensington Church Street,
London, W8 4LF
020 7368 4450

We aim to make our particulars both accurate and reliable. However, they are not guaranteed; nor do they form part of an offer or contract. If you require clarification on any points then please contact us, especially if you're traveling some distance to view. Please note that appliances and heating systems have not been tested and therefore no warranties can be given as to their good working order.