



ST ANDREWS
COURT



A stunning collection of eleven brand new contemporary apartments in the heart of Thame.

LUXURY
TOWN CENTRE
LIVING



LOCATION
THAME

Thame offers a picturesque setting enriched with cultural heritage. Its close-knit community, thriving local businesses, and vibrant social scene foster a sense of belonging, making Thame a truly special place to call home.



COFFEE SHOPS

- Treacles Tea rooms
- Kali Cafe
-
- Black Goo Café
- Monkey Puzzle
- Gail's Bakery



PUBS & RESTAURANTS

- | | |
|----------------|-----------------|
| Birdcage Inn | The Black Horse |
| The Six Bells | Old Nags Head |
| Thatch | Prezzo |
| The Rising Sun | Gloria's |
| The James Figg | Candelo Lounge |
| Spread Eagle | The Cross Keys |

SUPERMARKETS

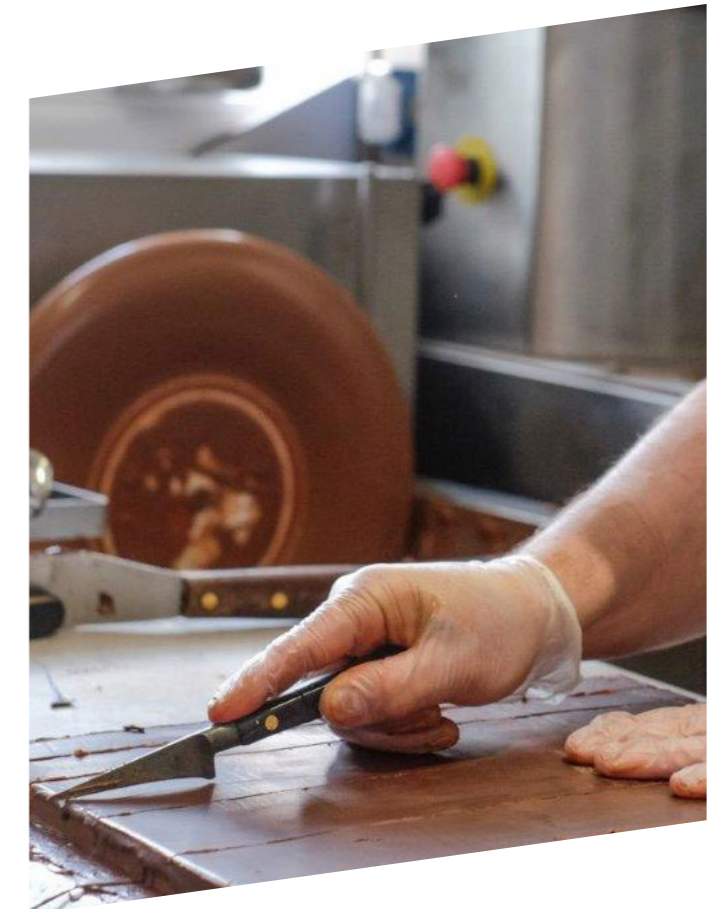
- Sainsbury's
- Morrisons
- Waitrose



LEISURE

- Racquets Fitness Centre
- Invictus Gym
- Thame Leisure Centre
- Thame Bowls Club
- Snooker Club
- Thame Tennis Club
- AB Golf Performance Centre

Thame, Oxfordshire, captivates with its unique blend of *historic charm and modern amenities*



ATTRACTIONS

- Weekly Farmers Market
- Thame Museum
- Players Art Theatre
- Rumsey's Chocolatier
- Waddesdon Manor

Every amenity, *right on your doorstep* in the centre of town.



Thames, Oxfordshire, is a vibrant hub adorned with numerous clothing shops and boutiques. Its charm extends to independent shops and farmers market, adding a delightful blend of local flair to its shopping scene.

COFFEE SHOPS

- 1 Treacles Tea rooms
- 2 Kali Cafe
- 3 Black Goo Café
- 4 Monkey Puzzle

ATTRACTIONS

- 1 Thames Museum
- 2 Players Art Theatre
- 3 Rumsey's Chocolatier

LEISURE

- 1 Racquets Fitness Centre
- 2 Invictus Gym
- 3 Thames Leisure Centre
- 4 Thames Bowls Club
- 5 Snooker Club
- 6 Thames Tennis Club
- 7 AB Golf Performance Centre

PUBS & RESTAURANTS

- 1 Birdcage Inn
- 2 The Six Bells
- 3 Thatch
- 4 The Rising Sun
- 5 The James Figg
- 6 Spread Eagle
- 7 The Black Horse
- 8 Old Nags Head
- 9 Prezzo
- 10 Gloria's
- 11 Candelo Lounge
- 12 The Cross Keys

SUPERMARKETS

- 1 Sainsbury's
- 2 Morrisons
- 3 Waitrose



TRAVEL




Find your way around town with many transport options

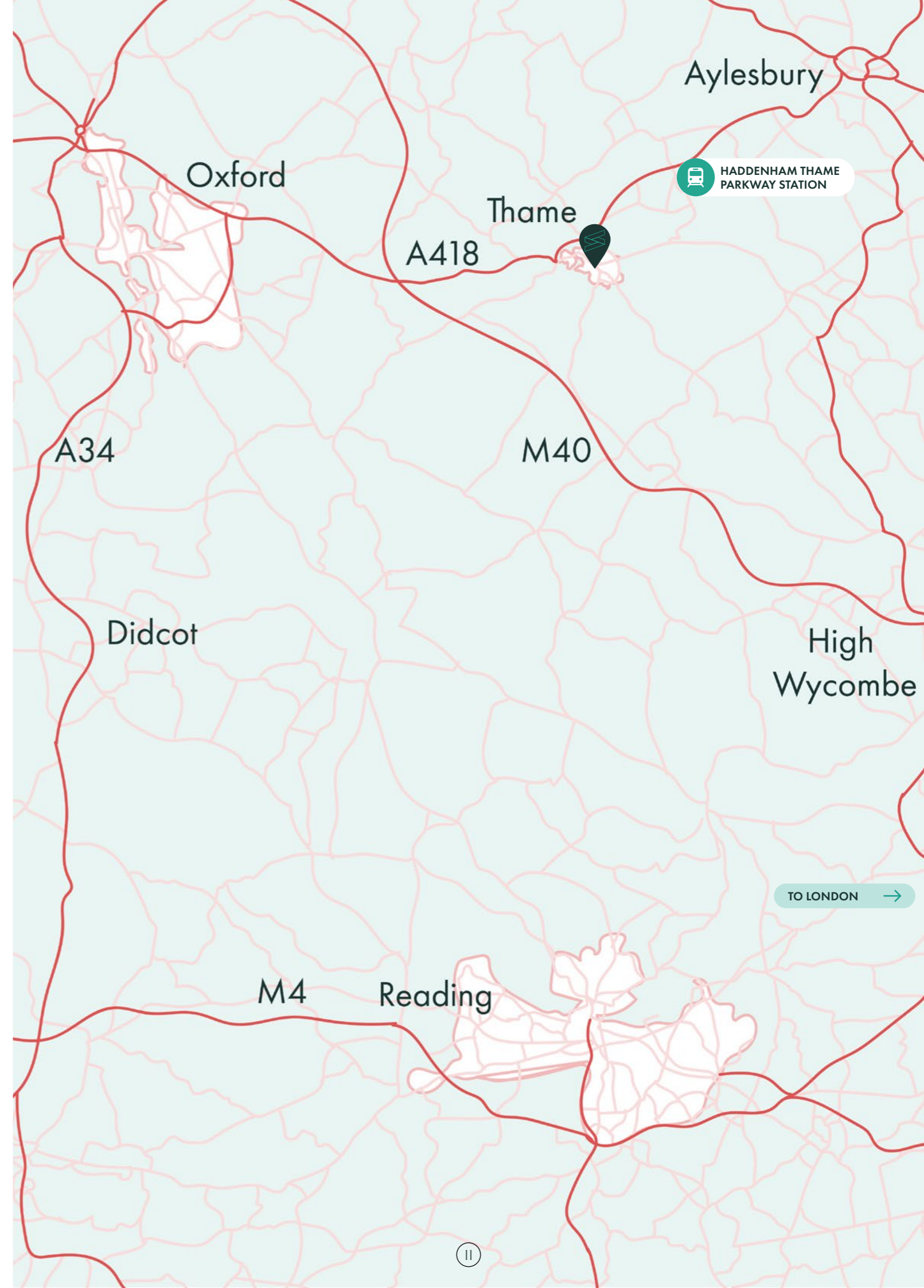
You will be delighted to discover the town's excellent transportation options. With frequent bus services connecting Thame to nearby towns and villages, you can easily explore the surrounding areas and access essential amenities.

Moreover, Thame's efficient train connections to London from Haddenham & Thame Parkway ensure effortless commuting, granting you access to the vibrant city while enjoying the tranquillity of suburban living.

Whether you're drawn to Thame's charming streets or its proximity to both urban and rural attractions, rest assured that convenient transport options await, enhancing your new life in this welcoming community.

Additionally, the town's excellent transport links, including nearby motorways and train stations, ensure seamless connectivity to surrounding cities, such as Oxford and London.

-  **8 MIN**
to Town Hall bus station
-  **35 MIN**
to Oxford Train Station
- 6 MIN**
to Haddenham & Thame Parkway
- 60 MIN**
to Reading
-  **40 MIN**
to London Marylebone station
- 30 MIN**
to Oxford
From Haddenham & Thame Parkway





STUNNING, *CONTEMPORARY* FINISHES

INTERIOR FINISHES

- ✓ Compact laminate worktops
- ✓ Sleek handleless kitchen cabinets with two tone doors
- ✓ Bosch cooking appliances
- ✓ Integrated dishwasher

HEATING

- ✓ Gas central heating

ACCESS

- ✓ Lift to 1st and 2nd floors

ENERGY EFFICIENCY

- ✓ EPC ratings of C+ and some B

FLOORING

- ✓ LVT flooring in living rooms, hallways and throughout some studio flats
- ✓ Carpeted bedrooms

SECURITY AND COMMUNICATION

- ✓ Video intercoms

OUR PROMISE

- ✓ 10-year structural defect warranty provided

A stunning collection of eleven brand new contemporary apartments in the heart of Thame.

APARTMENT	FLOOR	BEDS	AMENITIES	ACCESS	SIZE	PAGE
No. 8	Ground	Studio			37m ² / 398 sq ft	7
No. 9	Ground	1			41m ² / 443 sq ft	8
No. 10	Ground	Studio			39m ² / 418 sq ft	9
No. 19	Ground	1		Maisonette	42m ² / 449 sq ft	10
No. 20	Ground	1		Maisonette	39m ² / 417 sq ft	11
No. 12	First	Studio		Lift	37m ² / 395 sq ft	12
No. 13	First	2	Balcony	Lift	58m ² / 628 sq ft	13
No. 14	First	2	Balcony	Lift	63m ² / 676 sq ft	14
No. 15	First	Studio	Balcony	Lift	39m ² / 417 sq ft	15
No. 17	Second	2	Terrace	Lift	69m ² / 737 sq ft	16
No. 18	Second	2	Terrace	Lift	68m ² / 731 sq ft	17

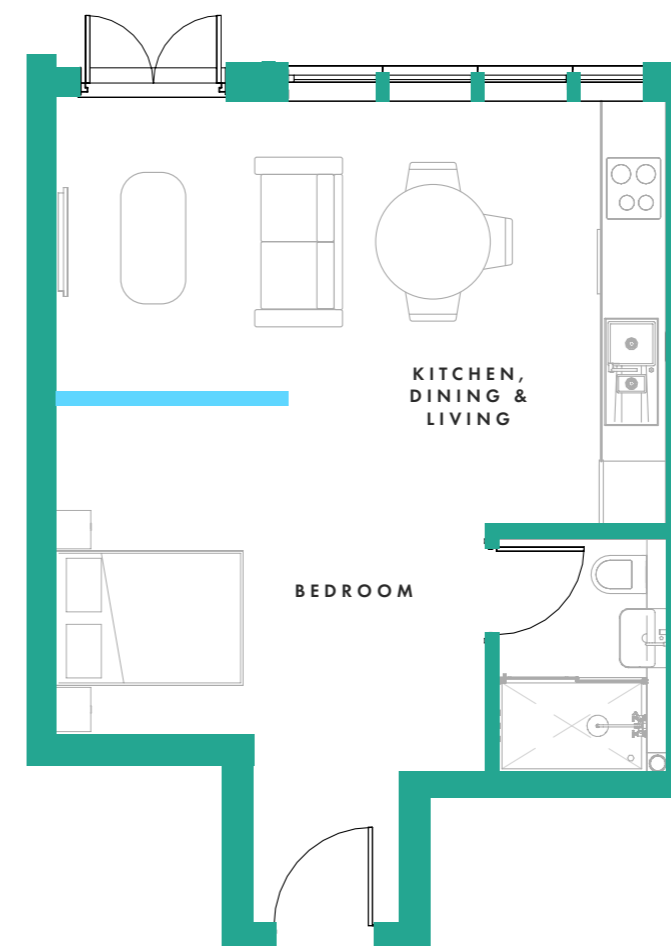
Apartment 8

GROUND FLOOR

37m² / 398 sq ft

Bedroom - 3.05m x 4.02m
(10'3" x 13'1")

Open-plan kitchen, living
& dining area
5.69m x 3.93m (18'7" x 12'2")



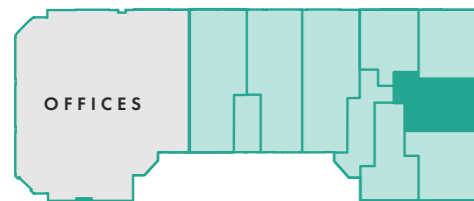
Apartment 9

GROUND FLOOR

41m² / 443 sq ft

Bedroom - 2.49m x 4.48m
(14'7" x 8'2")

Open-plan kitchen,
living & dining room
7.15m x 2.94m (23'6" x 8'9")



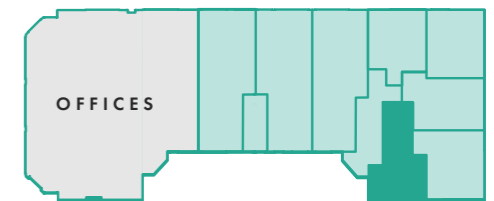
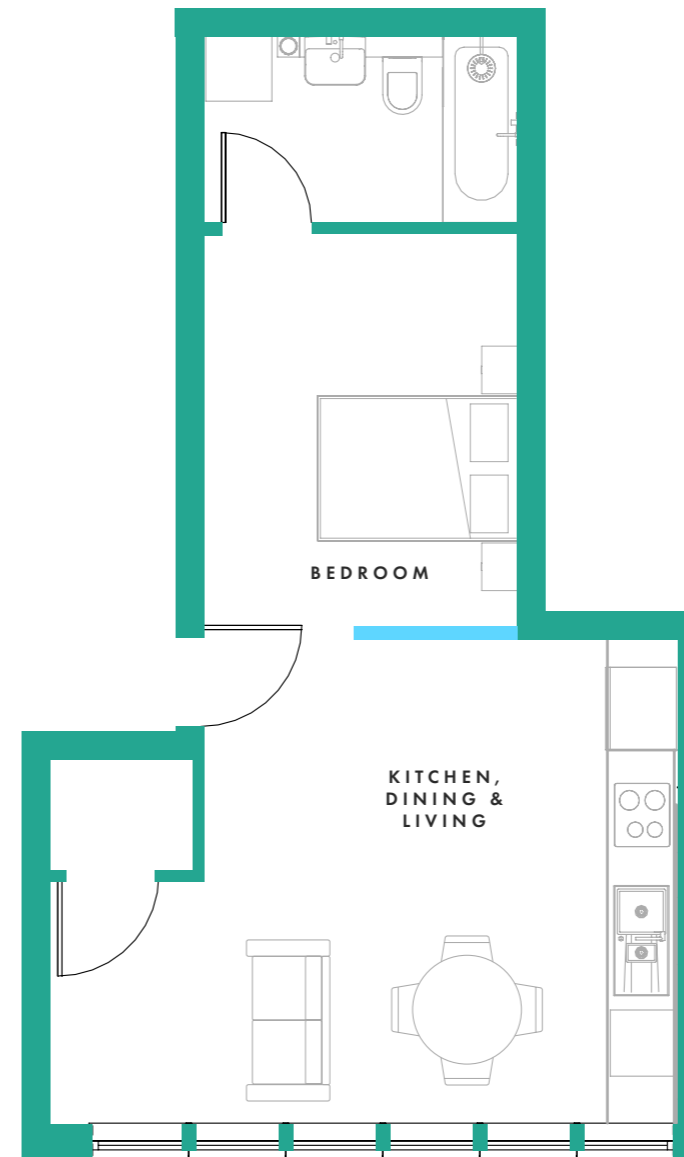
Apartment 10

GROUND FLOOR

39m² / 418 sq ft

Bedroom - 3.59m x 2.90m
(9'4" x 11'6")

Open-plan kitchen,
living & dining area
5.59m x 4.38 m (18'5" x 14'4")



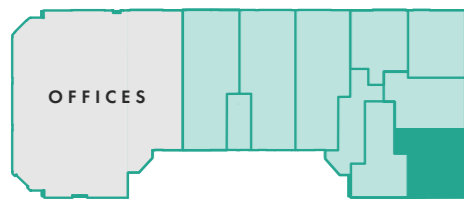
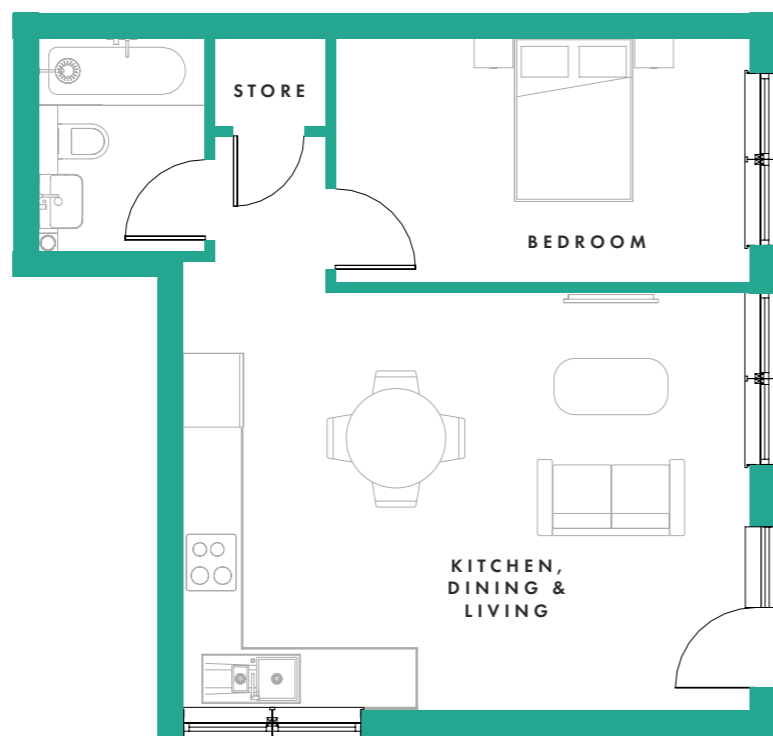
Apartment 19

GROUND FLOOR

42m² / 449 sq ft

Bedroom - 4.12m x 2.50m
(13'4" x 8'2")

Open-plan kitchen,
living & dining room
5.68m x 4.17m (18'7" x 13'8")



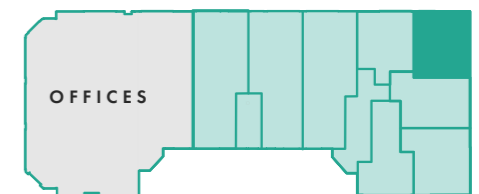
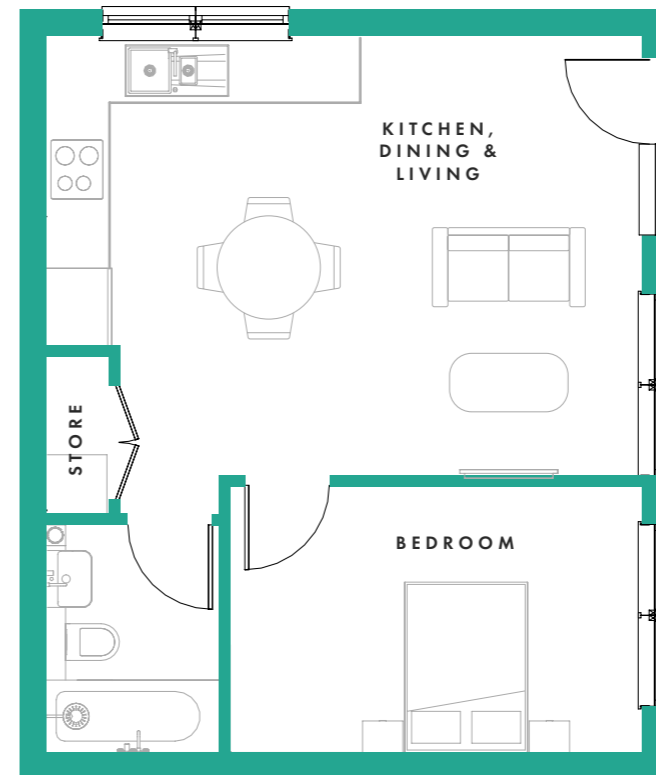
Apartment 20

GROUND FLOOR

39m² / 417 sq ft

Bedroom - 3.90m x 2.59m
(12'9" x 8'5")

Open-plan kitchen,
living & dining room
5.64m x 4.16m (18'7" x 13'8")



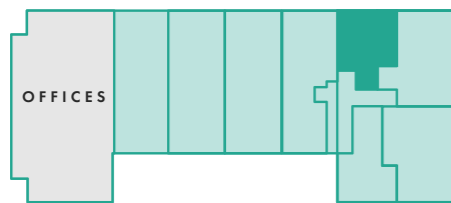
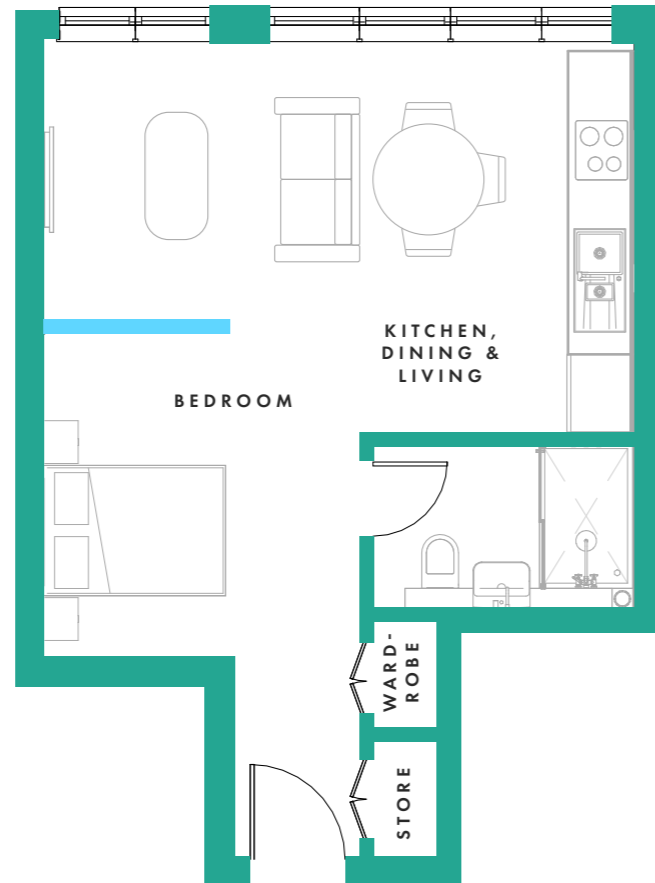
Apartment 12

FIRST FLOOR

37m² / 395 sq ft

Bedroom - 3.06m x 3.09m
(10' x 10'3")

Open-plan kitchen,
living & dining area
5.72m x 3.75m (18'7" x 12'2")



Apartment 13

FIRST FLOOR

58m² / 628 sq ft

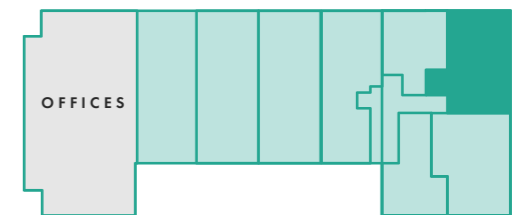
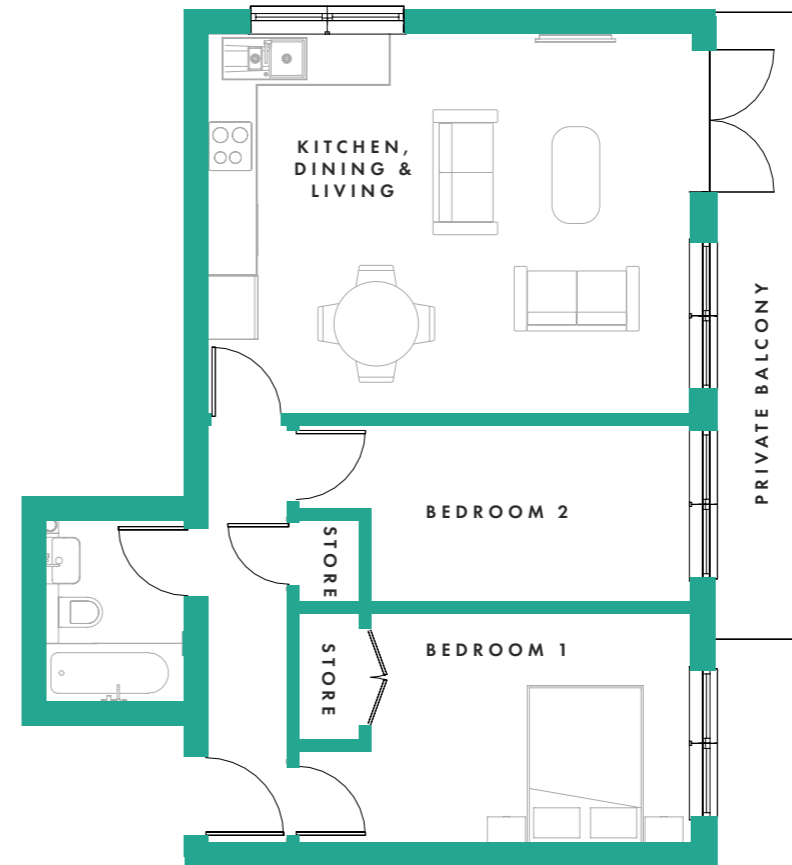
2 bedrooms

Bedroom 1 - 4.59m x 2.78m
(12'5" x 9')

Bedroom 2 - 4.59m x 2.13m
(12'3" x 6'9")

Open-plan kitchen,
living & dining room
4.43m x 5.67m (14'5" x 19'6")

Private balcony
1.20m x 7.37m (21'6" x 3'8")



Apartment 14

FIRST FLOOR

63m² / 737 sq ft

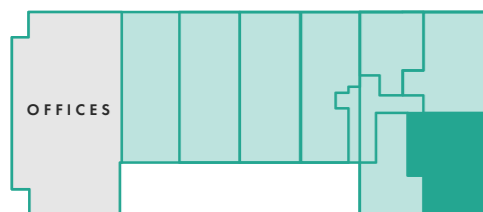
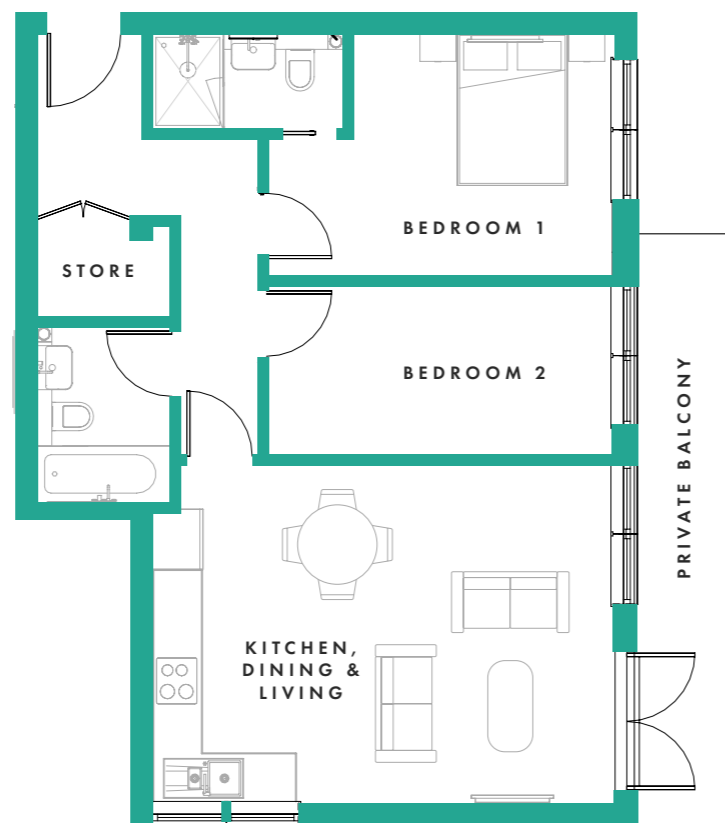
2 bedrooms

Bedroom 1 - 4.25m x 3.05m
(14' x 10')

Bedroom 2 - 4.26m x 2.17m
(14' x 7')

Open-plan kitchen,
living & dining room
5.65m x 4.17m (18'7" x 13'8")

Private balcony
7.37m x 1.20m (20'10" x 3'8")



Apartment 15

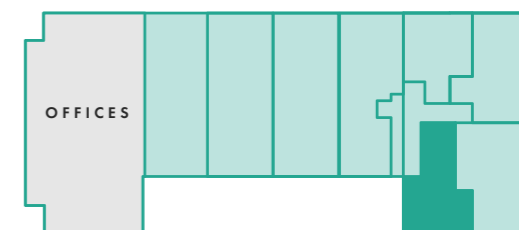
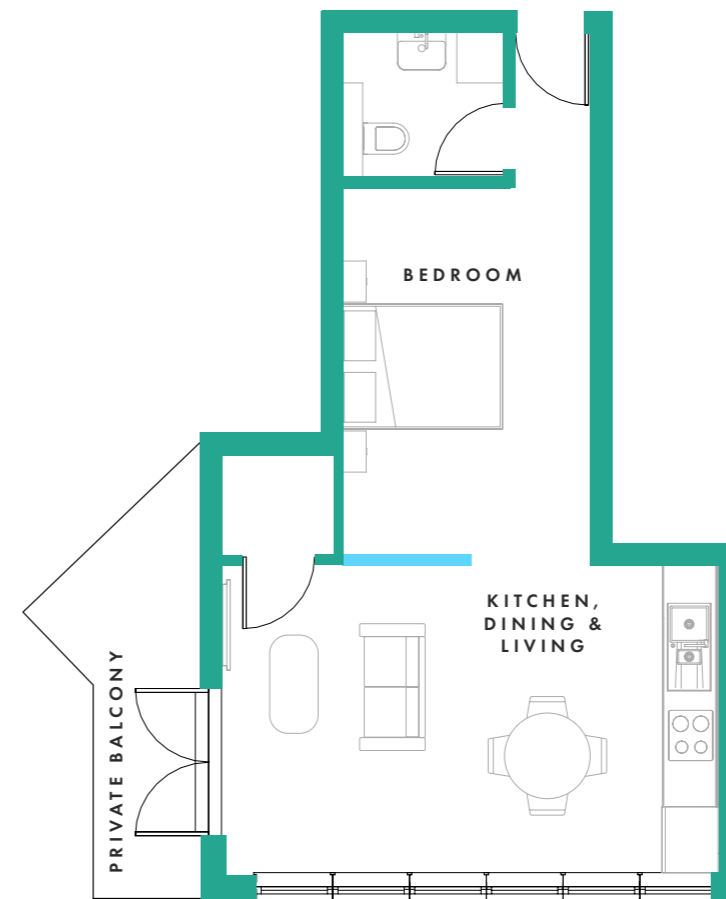
FIRST FLOOR

39m² / 417 sq ft

Bedroom - 2.90m x 4.00m
(9'4" x 13'7")

Open-plan kitchen,
living & dining area
5.60m x 3.50m (18'5" x 11'5")

Private balcony
4.95m x 1.18m (11'8" x 3'8")



Apartment 17

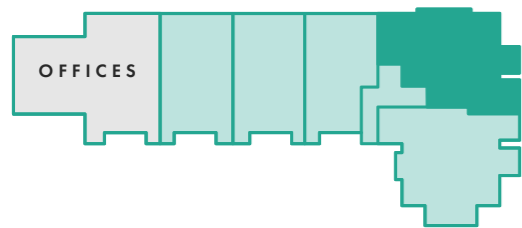
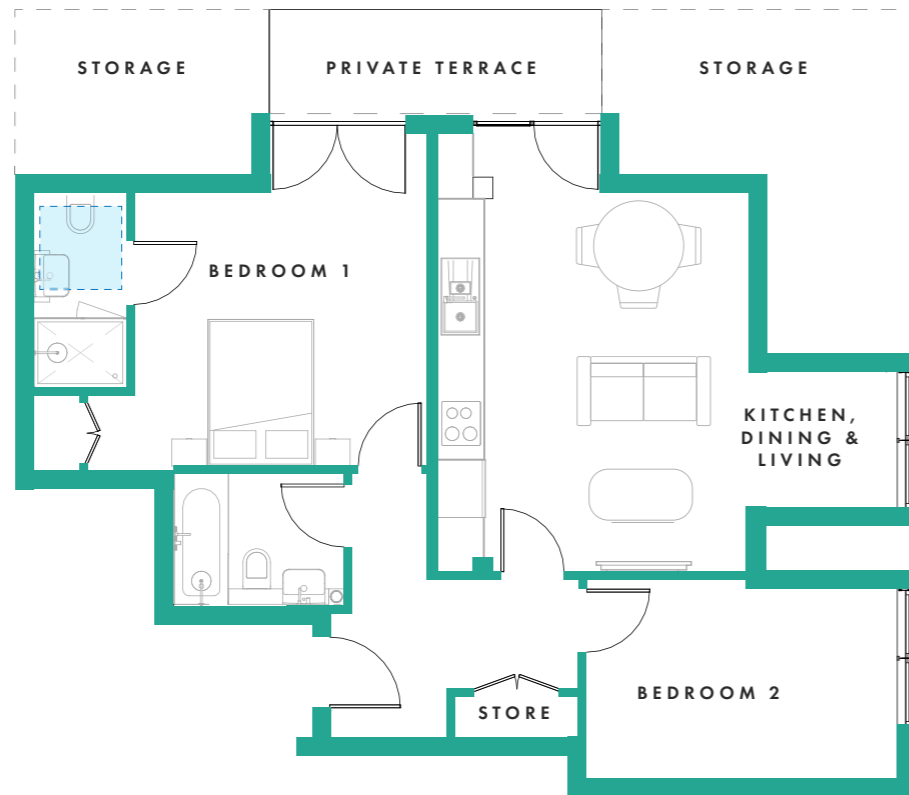
SECOND FLOOR

69m² / 737 sq ft

2 bedrooms
 Bedroom 1 - 3.83 x 4.10m
 (12'4" x 14'1")m
 Bedroom 2 - 4.02m x 2.45m
 (13'1" x 8'4")

Open-plan kitchen,
 living & dining room
 5.93m x 5.62m (19'7" x 18'6")

Private terrace
 4.27m x 1.38m (14' x 4'6")



Apartment 18

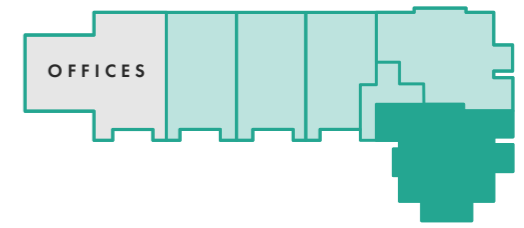
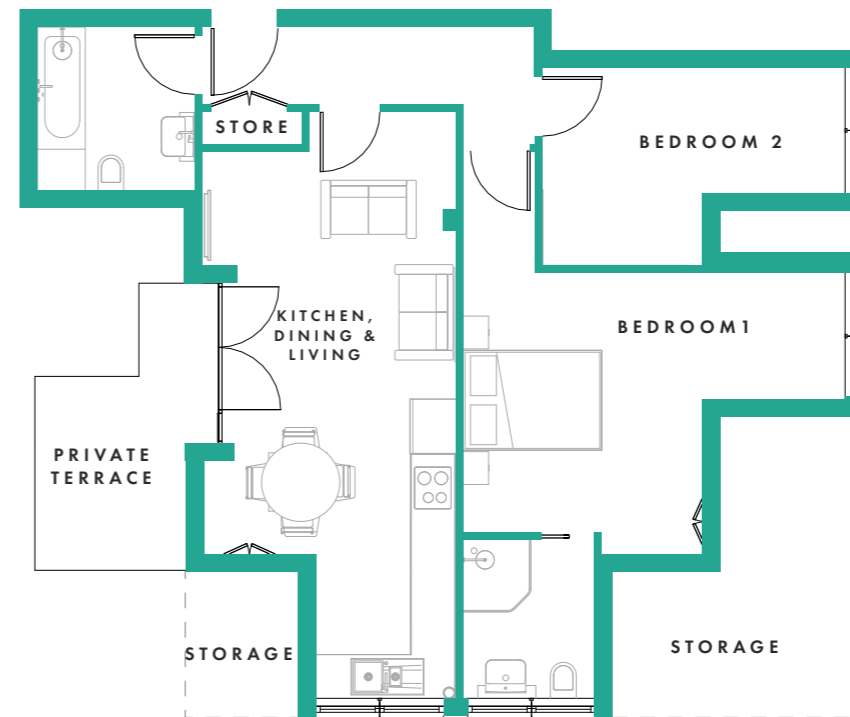
SECOND FLOOR

68m² / 731 sq ft

2 bedrooms
 Bedroom 1 - 5.22m x 3.63m
 (17'3" x 11'8")
 Bedroom 2 - 4.13 x 2.74m
 (13'6" x 9')

Open-plan kitchen,
 living & dining room
 3.51m x 7.54m (11'5" x 24'6")

Private terrace
 3.74m x 2.48m (6'9" x 7'9")





CRAFTED WITH DEVOTION

Our team of dedicated individuals are truly passionate about their work.



XP Property is a young and dynamic property development and investment business who focus on adding value at every step of the development lifecycle. XP specialise in delivering the highest quality residential, commercial, land and mixed-use space whilst creating solid financial returns for our investment partners.

WWW.XPPROPERTY.CO.UK



The talented team of designers and architects at AURA are experts in their field and will help you create that additional space for a growing family, design that stunning open-plan entertaining space you've always dreamed of having or help property developers get the most out of their developments.

WWW.AURAHOMES.CO.UK



Modern living
in the centre
of a historical
town.



SITE MAP DISCLAIMER

Whilst the computer-generated development layout shown has been prepared for the assistance of the prospective purchaser, the information is preliminary and for guidance purposes only. All planting and landscaping shown within computer-generated imagery is indicative only and may vary as construction takes effect. Please speak to the Sales Consultant for further information. Ground levels and other variations are not shown. Suggested north position, hard and soft landscaping and similar details are approximate only and may vary from what is shown – purchasers should satisfy themselves such information is correct and can ask our Sales Consultant to view the detailed architect's site drawings for full and accurate details.

CGI VISUALS DISCLAIMER

The illustrations are computer-generated images and are for guidance purposes only. External materials, finishes, landscaping, the orientation of sanitaryware, wardrobes and kitchen layouts may vary. Whilst all plans and images have been prepared for the assistance of the prospective purchaser, information shown is preliminary and for marketing guidance purposes only. Please note elevations, room sizes and layouts have been taken from architects drawings and may vary as construction takes effect. All dimensions are approximate only, are accurate to +/- 150mm and should not be used for carpet sizes, appliance spaces or items of furniture. Please speak with our Sales Team for more detail.

GENERAL DISCLAIMER

Every care has been taken in the preparation of this brochure. The details contained therein are for guidance only and should not be relied upon as exactly describing any of the particular material illustrated or written by any order under the Consumer Protection from Unfair Trading Regulations 2008. This information does not constitute a contract, part of a contract or warranty. The developers run a programme of continuous product development. Features, internal and external, may vary from time to time and may differ from those shown in the brochure.

No description or information given about the homes or their value, whether written or verbal or whether or not in these particulars may be relied upon as a statement of representation or fact. The selling agents do not have any authority to make any statement or representation of fact and any information given is entirely without the responsibility of the agents or the vendor company. All photographs, plans and computer generated images within this brochure are indicative and for illustration purposes only, they therefore may not represent the actual development or area – they are not intended to be taken as an exact representation. Any areas, measurements or distances are approximate only. Any buyer must satisfy him/herself by inspection or otherwise as to the correctness of any information.

ST ANDREWS
COURT

Wellington Street
Thame
OX9 3WT

Contact Us

www.standrewscourt-xp.co.uk

homes@xpproperty.co.uk

0800 009 6368