



Dowling Drive, Fradley, Lichfield, WS13 8WW

Offers In Region Of £250,000

🛏️ 2 🚿 2 🚗 1



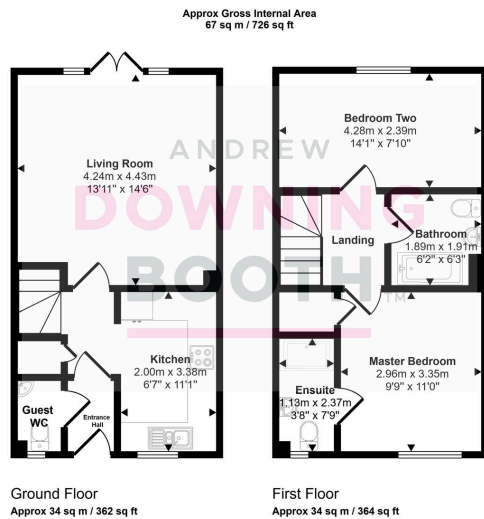
A consistently spacious and tastefully appointed two double bedroom home in a desirable position in Fradley, just ten minutes from Lichfield's thriving city centre.

This impressive mid-terrace property in Dowling Drive boasts a wide range of amenities being easily accessible, including gyms, eateries, scenic walks and the availability of a short drive to Lichfield (home to the award-winning Beacon Park, various upmarket bars/ restaurants and major supermarkets) and other areas via the A38. The nearby Lichfield Trent Valley train station provides a direct route to London, Birmingham and other surrounding areas, with the trip to London taking only around an hour and fifteen minutes.

The accommodation is set across two floors, with an inviting entrance hall, tastefully appointed and generous living/diner and very attractive fitted kitchen, whilst the first floor is home to both good size double bedrooms and the stunning main bathroom, with the Master bedroom complete with its own contemporary en-suite shower room.

Whether you're a first/second time buyer, investor or downsizer alike, this property has something for everyone; we must advise booking in a viewing at your earliest convenience in order to appreciate all that's on offer.





This floorplan is only for illustrative purposes and is not to scale. Measurements of rooms, doors, windows, and any items are approximate and no responsibility is taken for any error, omission or mis-statement. Icons of items such as bathroom suites are representations only and may not look like the real items. Made with Made Snaggy 360.

- Two Double Bedroom Mid-Terrace Property
- Contemporary & Attractive Kitchen
- Desirable Location
- Guest WC
- EPC Rating: B
- Impressive Room Sizes Throughout
- Master Bedroom With En-Suite
- Double Width Driveway
- Stunning Main Bathroom
- Council Tax Band: B

