



RESIDENTIAL



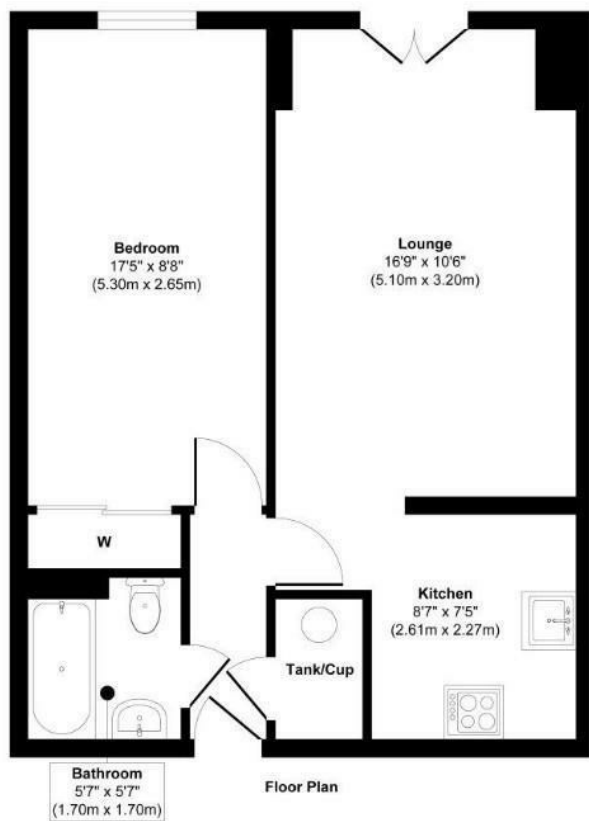
City Point, 1 Solly Street, Sheffield, S1 4BP

£120,000

- Tenant in Situ – Let at £750pcm, delivering a 7.5% gross yield
- Sought-After City Point Development – Secure and professionally managed
- Central Sheffield Location – Close to University, shops, and business hubs
- Turnkey Investment – Fully tenanted and ready to generate income from day one
- Excellent Transport Links – Walking distance to tram stops and Sheffield Station
- Modern One-Bedroom Apartment – Low maintenance, high tenant demand

Unit 1 Feast Field, Horsforth, Leeds, LS18 4TJ
0113 3224 345

info@tkiproperty.co.uk
www.tkiproperty.co.uk



Directions

Viewings

Viewings by arrangement only. Call 0113 3224 345 to make an appointment.

Council Tax Band

EPC Rating:

Energy Efficiency Rating		
	Current	Potential
Very energy efficient - lower running costs		
(92 plus) A		
(81-91) B		
(69-80) C		
(55-68) D		
(39-54) E		
(21-38) F		
(1-20) G		
Not energy efficient - higher running costs		
England & Wales	EU Directive 2002/91/EC	