



*jordan fishwick*

FALLOWFIELD  
Egerton Road



# Egerton Road, Fallowfield, M14 6RA

£975 Per Calendar Month



## The Property

\*\*\* AVAILABLE JULY \*\*\* A one bedroom apartment forming part of a purpose built development on a popular road in Withington. The property has been refurbished to a high standard in recent years and offers generous living space. Perfectly suited to a professional individual, the property is situated within walking distance into Withington and Ladybarn. In brief, the property comprises; entrance hall, bright and spacious lounge and modern kitchen including appliances, master bedroom with fitted wardrobe and a high spec modern three-piece bathroom suite. Single occupancy only. Furnished. To book a viewing or apply for this property please contact our Didsbury office.

View our Virtual Tour Here - <https://youtu.be/Y2HUwJP1Sp0>

EPC Rating C // Council Tax Band A

## Directions

M14 6RA



- Available July
- One Double Bedroom
- Furnished
- Single Occupancy Only
- Modern Décor Throughout
- Great Location
- Close to all Local Amenities
- On Street Parking
- Council Tax Band A
- EPC Rating - C

Postcode - M14 6RA

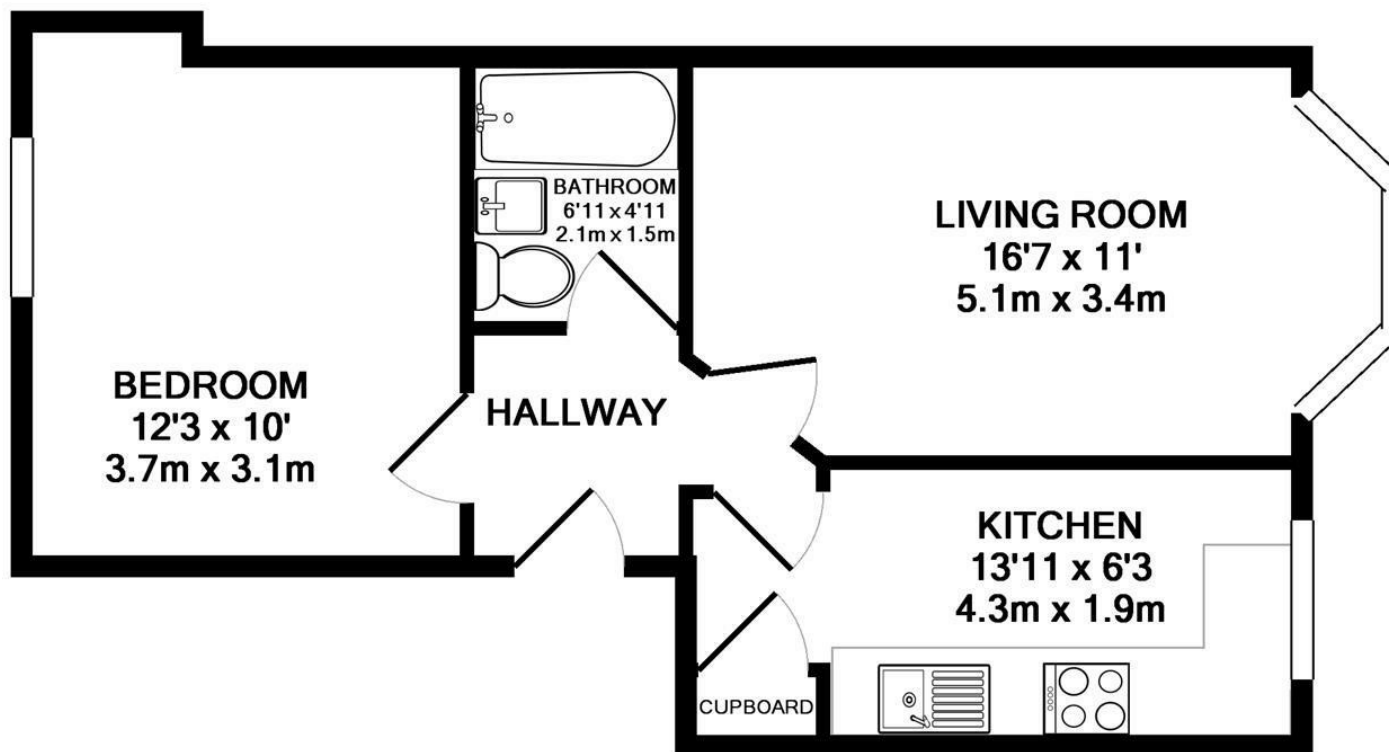
EPC Rating - C

Floor Area - sq ft

Local Authority - Manchester

Council Tax - A





TOTAL APPROX. FLOOR AREA 399 SQ.FT. (37.1 SQ.M.)

Whilst every attempt has been made to ensure the accuracy of the floor plan contained here, measurements of doors, windows, rooms and any other items are approximate and no responsibility is taken for any error, omission, or mis-statement. This plan is for illustrative purposes only and should be used as such by any prospective purchaser. The services, systems and appliances shown have not been tested and no guarantee as to their operability or efficiency can be given

Made with Metropix ©2014



These particulars are believed to be accurate but they are not guaranteed and do not form a contract. Neither Jordan Fishwick nor the vendor or lessor accept any responsibility in respect of these particulars, which are not intended to be statements or representations of fact and any intending purchaser or lessee must satisfy himself by inspection or otherwise as to the correctness of each of the statements contained in these particulars. Any floorplans on this brochure are for illustrative purposes only and are not necessarily to scale.

Offices also at: Wilmslow, Macclesfield, Hale, Sale, Chorlton, Glossop, Manchester & Salford

757-759 Wilmslow Road, Didsbury Village, Manchester

**0161 445 4480**

didsbury@jordanfishwick.co.uk  
www.jordanfishwick.co.uk