



Slievemore Close, SW4
£575,000

Dexters



Slievemore Close, SW4

An immaculately presented three bedroom, two bathroom apartment on the first floor of a stunning Georgian building set within a private gated close off Clapham High Street.

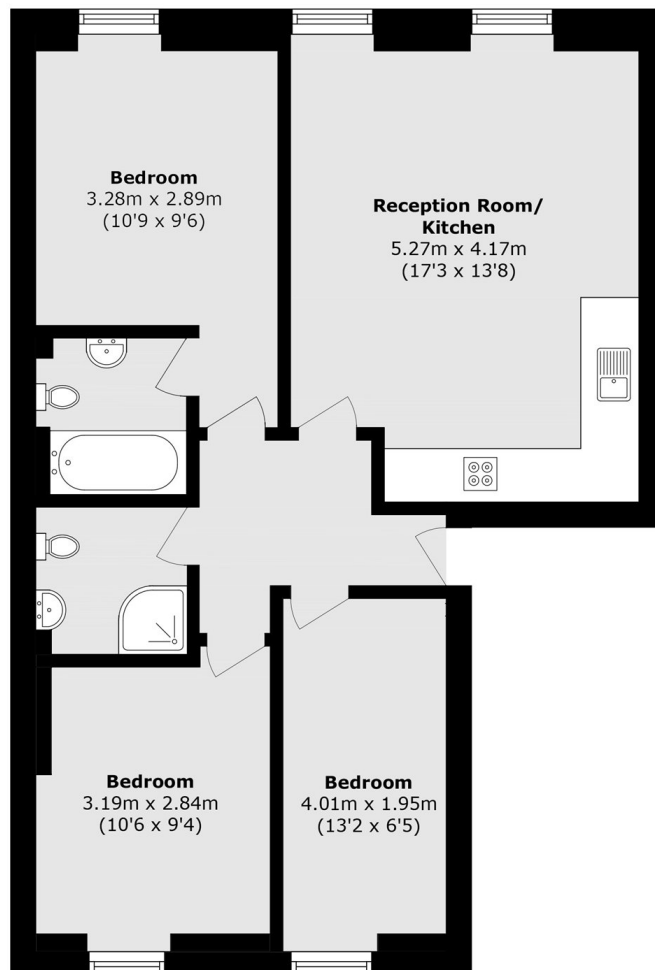
Slievemore Close is tucked off Voltaire Road which is a quiet residential street ideally located moments from Clapham High Street and the amenities of Clapham Old Town. Local transport links include Clapham North Underground Station (Northern Line) and Clapham High Street British Rail Station (direct to Victoria and London Bridge).

Features

- Three Bedrooms
- Two Allocated, Gated Parking Spaces
- Two Bathrooms
- Communal Gardens
- Off Street Parking



Slievemore Close, London, SW4



Total area (approx.): 66.1 sq. m (711.5 sq. ft)