



Argyle Road, W13

£500,000

A first floor two-bedroom period conversion apartment presented in good condition throughout and retaining lovely period fireplaces. Sold with planning for the loft conversion with landlords consent to include an extra bedroom and bathroom. With off-street parking to the front and no onward chain.

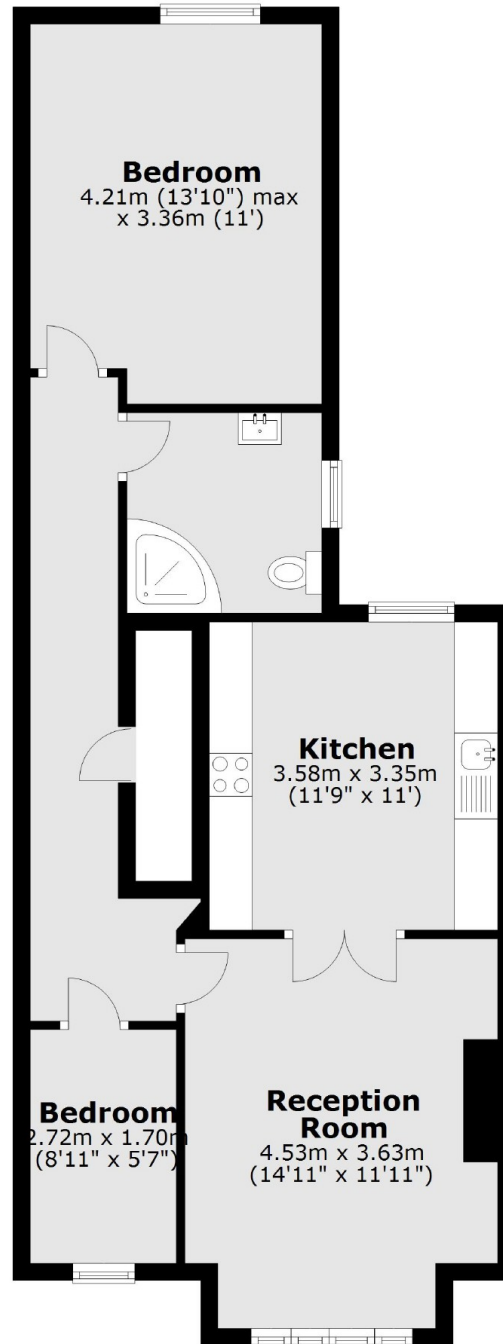
Located just moments from West Ealing Elizabeth Line Station with fast trains across the capital with access to Canary Wharf in approximately thirty minutes. There are numerous local shops and amenities, including restaurant's and a Waitrose Superstore.

Features

- Two Bedrooms
- Period Conversion
- First Floor
- Off Street Parking
- No Onward Chain
- Extension Potential

Argyle Road, London, W13

First Floor



Total area: approx. 62.5 sq. metres (672.7 sq. feet)