



Blue Anchor Lane, SE16

£400,000

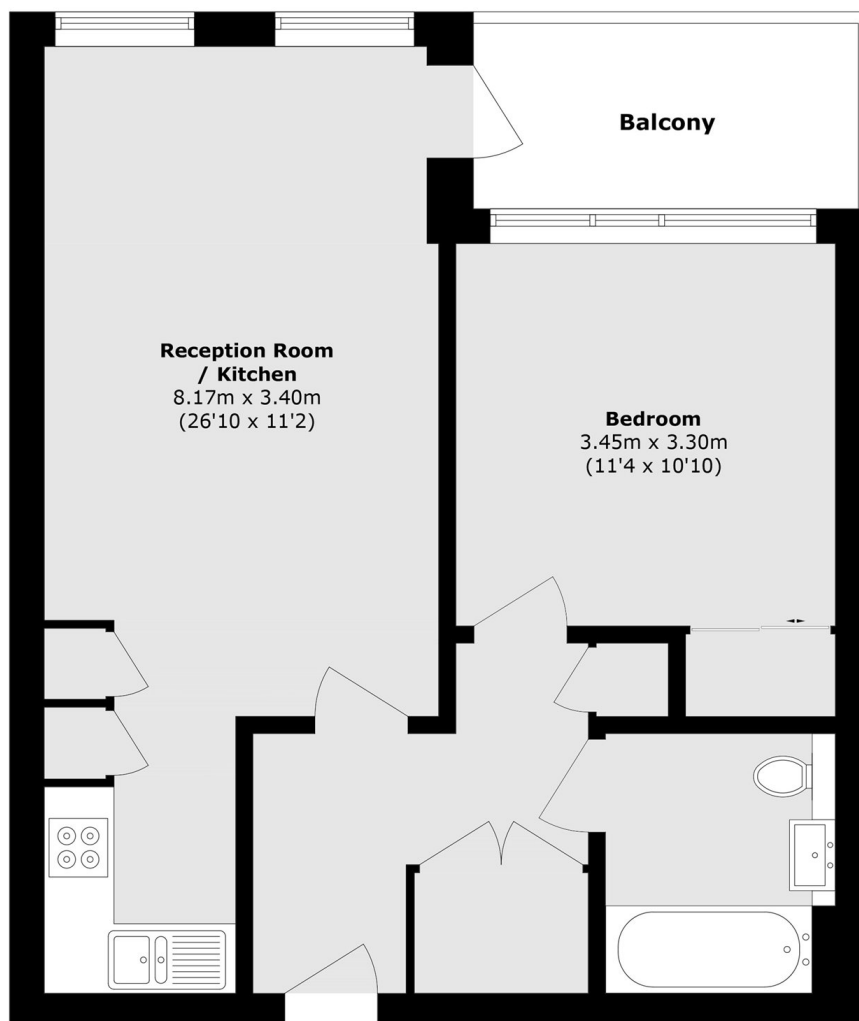
Situated in this sought after development, this one double bedroom flat is in excellent condition and had a bright and airy kitchen/ living space, modern bathroom, private balcony and great views.

Bridgestone House is located 0.4 miles from Bermondsey Station offering excellent transport links to anywhere in London. A wide range of shops, cafés, restaurants and artisan food markets are moments away.

Features

- One Double Bedroom
- Private Balcony
- Fantastic Condition
- Excellent Location
- Long Lease
- Chain Free

Blue Anchor Lane, London, SE16



Second Floor

Total area (approx.): 49.9 sq. m (537.1 sq. ft)

Balcony area (approx.): 5.3 sq. m (57.0 sq. ft)