





15 Curzon Avenue

Northwich, Northwich

Four-Storey Townhouse, set on a superb corner plot with Four Bedrooms.

Council Tax band: E

Tenure: Freehold

EPC Energy Efficiency Rating: B

EPC Environmental Impact Rating: B

- Popular Four-Storey Townhouse
- Set on a Superb Corner Plot
- Four Bedrooms
- Balcony Points Throughout
- Spacious Kitchen Diner
- Lounge with Great Views
- Double Driveway & Garage
- Master Bedroom & En-Suite
- Utility Room & Downstairs WC
- Video Tour Available

Entrance Hallway

A connecting space, which leads into the Kitchen Diner and Downstairs WC. There is a staircase leading to the first floor.

Kitchen Diner

Spacious Kitchen Diner, made even bigger by its corner plot location. Fitted with a range of wall, drawer and base units with worksurfaces above. Opens to the Utility, and there are bifold doors to the rear garden. Seating area separate to the main Kitchen for winding down and watching TV.

Utility Room

Handy space for a range of appliances.

Downstairs WC

Low level WC, and hand wash basin.

First Floor Landing

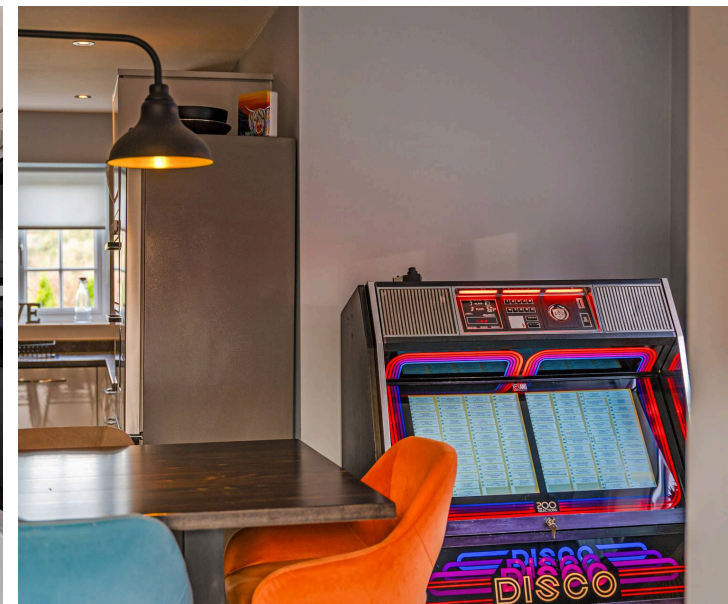
Connecting to the Lounge, Shower Room and Bedroom Four.

Spacious Lounge with Balcony

A fantastic space which has been well laid out to provide plenty of seating options. This room is great for entertaining, relaxing or even heading out to the balcony to watch the sun set.

Bedroom Four/Office

A multi-purpose space, doubled with a balcony overlooking the rear.



Shower Room

Low level WC, hand wash basin and shower.

Second Floor Landing

Connecting to Bedroom Two, Three and Second Floor Bathroom.

Bedroom Two

Spacious bedroom with balcony.

Bedroom Three

Spacious bedroom with balcony.

Second Floor Bathroom

Panelled bathtub, low level WC and hand wash basin.

Third Floor Landing

Access to the Master Bedroom

Master Bedroom

Spacious bedroom with built in storage, loft access and door to the en-suite.

En-Suite

Spacious, with Low level WC, hand wash basin and shower.

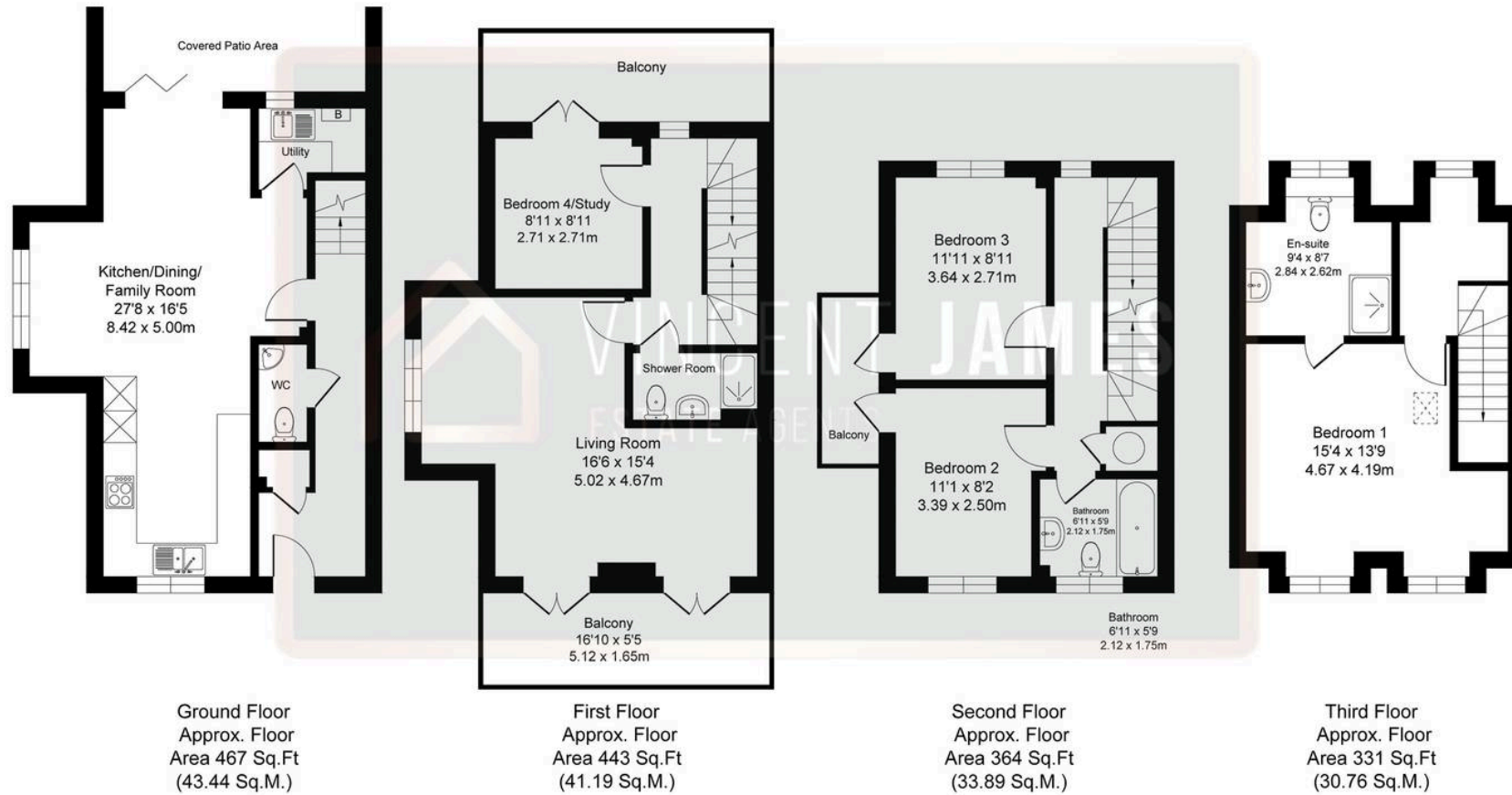




Curzon Ave, Winington

Total Approx. Floor Area 1605 Sq.ft (149.28 Sq.M.)

Surveyed and drawn by Thornley Photography for illustrative purpose only. Whilst every attempt was made to ensure the accuracy of the floor plan, all measurements are approximate and no responsibility is taken for any error.



Vincent James Estate Agents

87 Witton Street, Northwich - CW9 5DR

01606663939 • hello@vincentjamesestateagents.co.uk • www.vincentjamesestateagents.co.uk/