



Guide Price

£400,000

Freehold

3x  1x  1x 

**Goodwood Crescent,
Singlewell, Gravesend,
Kent, DA12**

Wards
Helping you move forwards



Main features

- Located In the sought after Hever Court Road area
- Beautiful open plan kitchen, dining and lounge space
- Ideal family home
- Convenient location for local schools and countryside walks
- Close proximity to the A2 motorway

Accommodation

GROUND FLOOR

Entrance Hall

Lounge: 12'10 into bay x 10'0 (3.91m x 3.05m)

Kitchen/Dining Area: 16'6 x 10'7 (5.03m x 3.23m)

FIRST FLOOR

Landing

Bedroom 1: 12'9 x 10'0 (3.89m x 3.05m)

Bedroom 2: 10'8 x 10'1 (3.25m x 3.08m)

Bedroom 3: 10'3 x 6'0 (3.13m x 1.83m)

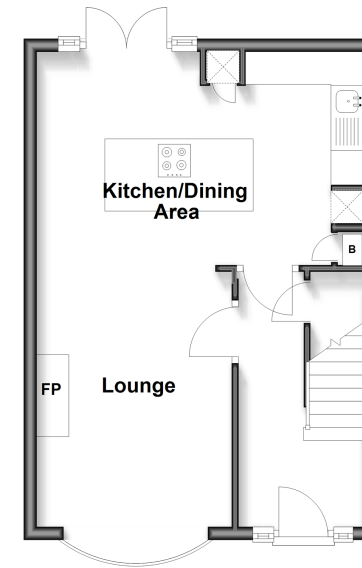
Bathroom

OUTSIDE

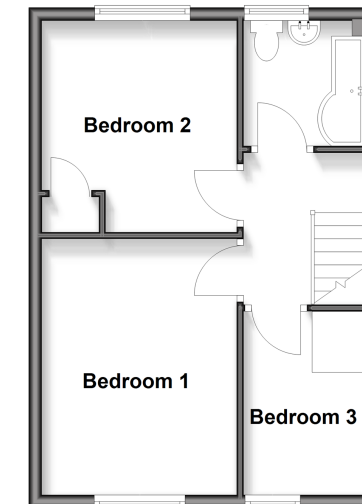
Off Road Parking

Rear Garden

Ground Floor
Approx. 37.1 sq. metres (399.0 sq. feet)



First Floor
Approx. 36.8 sq. metres (395.6 sq. feet)



Call Gravesend - 01474 352417 ■ wardsof Kent.co.uk



11140905/20260323/SB/SB