



Poplar street Southport, PR8 6DT £750 Per Month

Flexi-Agent are pleased to present this exceptionally finished, recently refurbished one-bedroom residence, situated on the sought-after Poplar Road in Southport (PR8 6DT). Available at £750 per month, this beautifully upgraded home offers refined, contemporary living ideal for a professional tenant.

The property boasts a generous layout with stylish modern décor throughout, including:

- Spacious, light-filled living area
- Contemporary galley-style kitchen
- Well-proportioned double bedroom
- Sleek, modern bathroom
- Off-road parking
- Recently refurbished throughout
- Turnkey, move-in-ready presentation

Viewing

Please contact our Flexi-Agent Southport Lettings Office on 01704 889455 if you wish to arrange a viewing appointment for this property or require further information.



1



1



null



Floor Plan

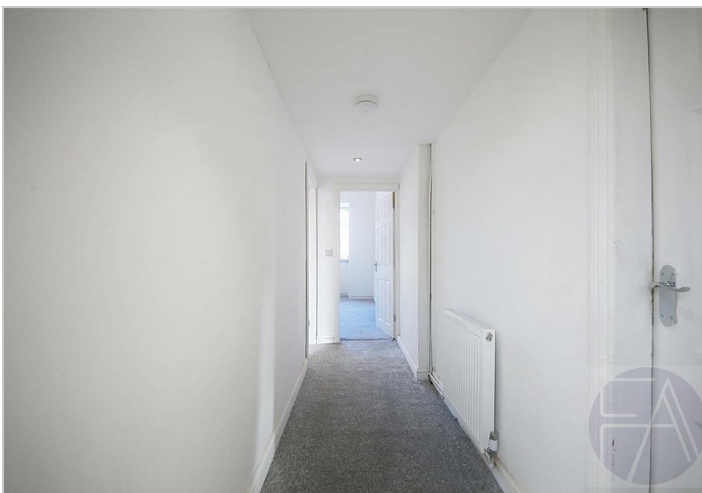


Area Map



Energy Efficiency Graph

Energy Efficiency Rating		Environmental Impact (CO ₂) Rating	
Current	Potential	Current	Potential
Very energy efficient - lower running costs (92 plus) A (81-91) B (69-80) C (55-68) D (39-54) E (21-38) F (1-20) G		Very environmentally friendly - lower CO ₂ emissions (92 plus) A (81-91) B (69-80) C (55-68) D (39-54) E (21-38) F (1-20) G	
Not energy efficient - higher running costs		Not environmentally friendly - higher CO ₂ emissions	
England & Wales		England & Wales	
EU Directive 2002/91/EC		EU Directive 2002/91/EC	



These particulars, whilst believed to be accurate are set out as a general outline only for guidance and do not constitute any part of an offer or contract. Intending purchasers should not rely on them as statements of representation of fact, but must satisfy themselves by inspection or otherwise as to their accuracy. No person in this firm's employment has the authority to make or give any representation or warranty in respect of the property.