



Tiltman Place, N7

£375,000

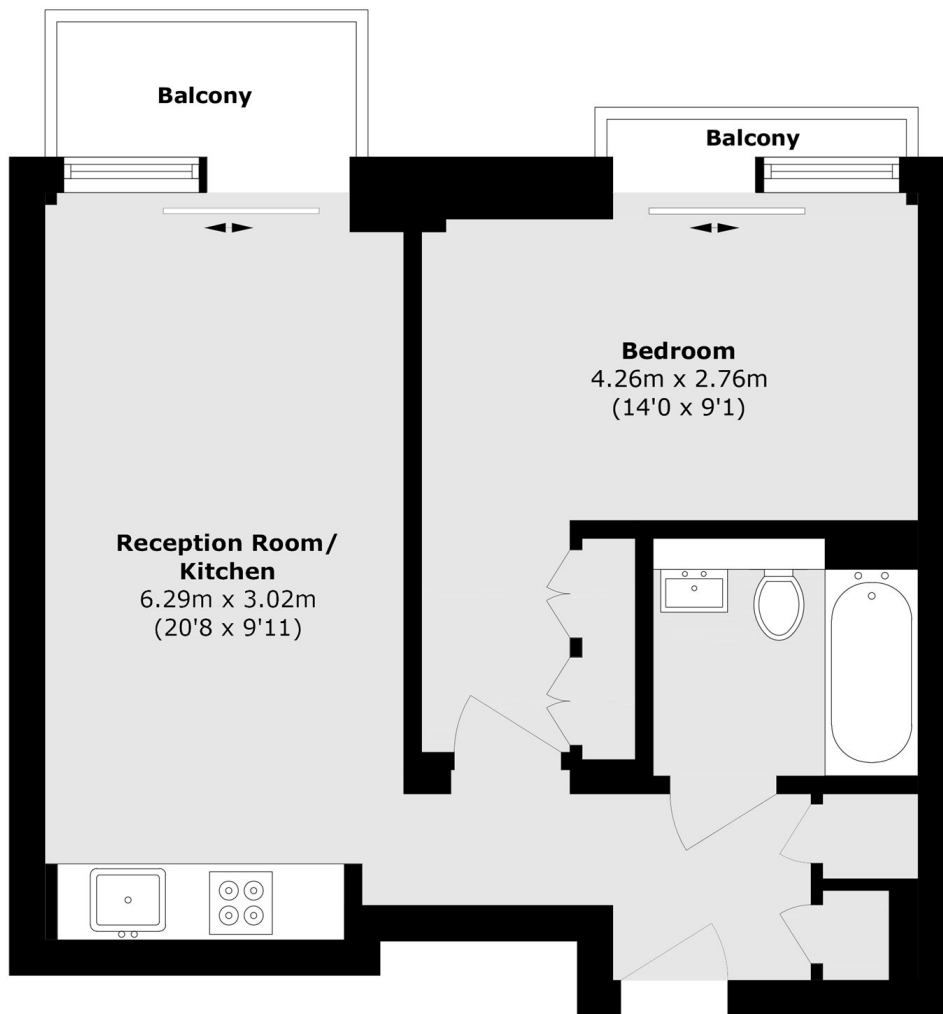
A well presented one bedroom apartment located on the second floor of a private development. This residence features an open plan living area, a double bedroom with built in wardrobes and wooden flooring throughout.

Tiltman Place is well located between Finsbury Park, Archway and Tufnell Park. Offering easy access to the fantastic range of local shops, restaurants, coffee shops, eateries and great transport links in the area.

Features

- One Bedroom
- Open Plan
- Balcony
- Private Development
- 24 Hour Concierge
- Chain Free

Tiltman Place, London, N7



Total area (approx.): 46.4 sq. m (499.4 sq. ft)
Balcony area (approx.): 3.6 sq. m (38.7 sq. ft)