






RUTLAND GATE KNIGHTSBRIDGE SW7
£1,730 PER WEEK AVAILABLE 14/04/2026

Hamptons
THE HOME EXPERTS

{ THE PARTICULARS

Rutland Gate Knightsbridge SW7

£1,730 Per Week
Furnished

 3 Bedrooms
 2 Bathrooms
 1 Reception

Features

- Three Bedrooms, - Principal Bedroom With En-Suite Facilities, - Second Double Bedroom, - Single Bedroom/Study, - Porter, - Balcony, - Garden Square, - Offering 1,306 SF Lateral Living Space, - Council Tax Band H, - Available Now
Furnished

Council Tax

Council Tax Band H

Hamptons
7 Lower Sloane Street
Sloane Square, London, SW1W 8AH
020 7824 8242
sloanesquarelettings@hamptons.co.uk
www.hamptons.co.uk

{ A LOVELY 3 BEDROOM APARTMENT, 3RD FLOOR, LIFT, BALCONY, PORTER.

The Property

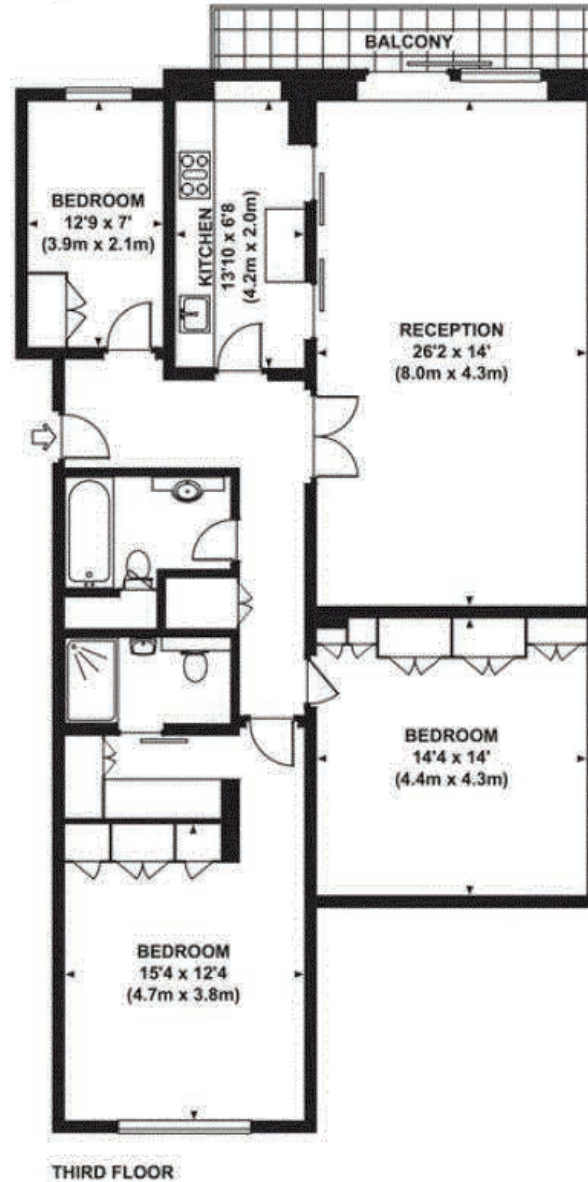
Beautiful three bedroom apartment in the heart of Knightsbridge, moments from the Bulgari Hotel and Harrods. The property benefits from an on site porter, lift, balcony and offers over 1,300 Squared Feet modern lateral living space. Situated on a lovely garden square this apartment is on the third floor with access via lift. The Principal bedroom features a dressing area with an abundance of storage and an en suite bathroom. There are two further bedrooms one of which is a spacious double with shared use of the family bathroom. To the front of the apartment there is a large reception room with balcony overlooking the square and a kitchen that can be open plan or separated dependant upon your preference.

Location

Centrally located, Knightsbridge is an exquisite part of London. The area contains many of London's finest restaurants, shops, art galleries and hotels. Chelsea, Knightsbridge and South Kensington are also famed for Hyde Park and London's cultural centrepiece, with The Natural History Museum and The Victoria and Albert Museum close by. Knightsbridge tube (Piccadilly Line) station is located less than half a mile from the apartment and offers a selection of top end shops to include Prada, Harrods and many more.



Approx. gross internal area
1306 Sq Ft. / 121.5 Sq M.



For Clarification

We wish to inform prospective tenants that we have prepared these particulars as a general guide and they have been confirmed as accurate by the landlord. We have not verified permissions, nor carried out a survey, tested the services, appliances and specific fittings. Room sizes are approximate and measurement figures rounded: they are taken between internal wall surfaces and therefore include cupboards/shelves, etc. Accordingly, they should not be relied upon for

carpets and furnishings. It should also be noted that all fixtures and fittings, carpeted, curtains/blinds, kitchen equipment and garden statuary, whether fitted or not, are deemed removable by the landlord unless specifically itemised with these particulars. Please enquire in office or on our website for details on holding deposit and tenancy deposit figures.

Energy Efficiency Rating		Current	Potential
100 kWh/m ² or less	A		
71-100 kWh/m ²	B	92	92
51-70 kWh/m ²	C		
31-50 kWh/m ²	D		
11-30 kWh/m ²	E		
1-10 kWh/m ²	F		
> 10 kWh/m ²	G		

England & Wales EU Directive 2002/91/EC

