



## 10 Railway Terrace, Hollybush

OIEO £160,000 Freehold

Mid Terrace Cottage • Semi-Rural Postion • Two Bedrooms • Two Reception Rooms • Kitchen • Sun Room • Shower Room • Mountain Views • EPC - C



1 Bethcar Street, Ebbw Vale, Gwent, NP23 6HH  
Tel: 01495 302301 Email: [ebbwvale@bidmeadcook.co.uk](mailto:ebbwvale@bidmeadcook.co.uk)  
[www.bidmeadcook.co.uk](http://www.bidmeadcook.co.uk)

A charming cottage set within a quiet position of the semi-rural village of Hollybush. Conveniently located for access to the A4048 to Blackwood, and cycle path to Blackwood via Argoed, that runs alongside the river with picturesque views.

The accommodation comprises two reception rooms, kitchen, shower room, sunroom, and two bedrooms. Benefits include multi-fuel burning stove to the living room, a combi boiler gas central heating system, upvc double glazing, a tiered rear garden with outdoor storage, hot tub area, and wood store. There are far reaching views from the front and rear of this property, which must be viewed to fully appreciate.



Council Tax band: A

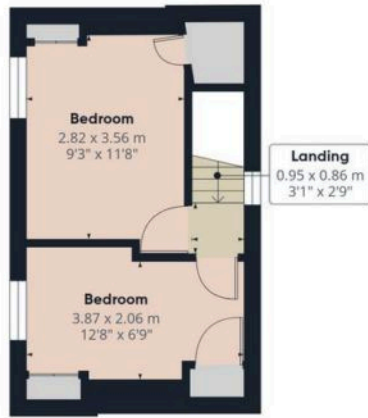
Tenure: Freehold

EPC Energy Efficiency Rating: C





Floor 0



Floor 1



**Approximate total area<sup>m</sup>**

67.5 m<sup>2</sup>  
726 ft<sup>2</sup>

(1) Excluding balconies and terraces

Calculations reference the RICS IPMS 3C standard. Measurements are approximate and not to scale. This floor plan is intended for illustration only.

GIRAFFE360

You can include any text here. The text can be modified upon generating your brochure.

You can include any text here. The text can be modified upon generating your brochure.

