



## Marner Point 1 Jefferson Plaza

, London, E3 3QB

Asking price £500,000

Nestled in the vibrant Jefferson Plaza, this modern flat in Marner Point offers a splendid opportunity for those seeking a comfortable and stylish living space in London. Built in 2013, this property boasts a contemporary design and is situated on the 10th floor, accessible via a convenient lift.

The flat features three generously sized double bedrooms, providing ample space for relaxation and rest. One of the bedrooms benefits from an ensuite bathroom, ensuring privacy and convenience, while a full-sized family bathroom caters to the needs of the household. The heart of the home is the spacious open-plan kitchen and living area, perfect for entertaining guests or enjoying quiet evenings in.

Residents will appreciate the 24/7 concierge service, adding an extra layer of security and assistance. For those who value fitness, a well-equipped gym is available within the building, promoting a healthy lifestyle without the need to venture far from home.

The property is ideally located close to Bromley-by-Bow station, offering excellent transport links to the rest of London, making it a perfect choice for commuters.

This flat is available for viewing right now, presenting a fantastic opportunity to secure a modern and spacious home in a desirable location. Don't miss out on the chance to make this property your own.

- 3 Double Bedrooms
- 2 Bathrooms
- Available Immediately
- 10th floor with lift access
- 24/7 concierge
- Gym
- Chain Free

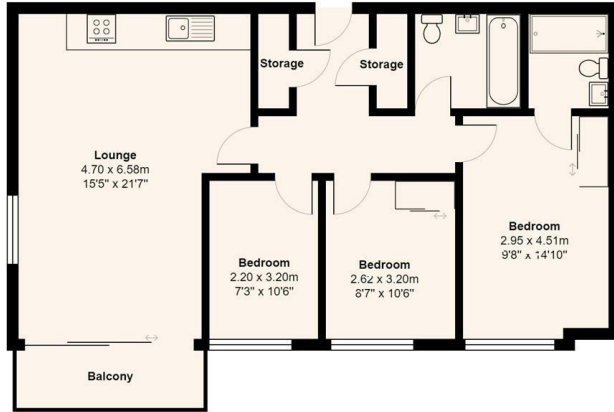
### Viewing

Please contact us on 020 3198 4517 if you wish to arrange a viewing appointment for this property or require further information.



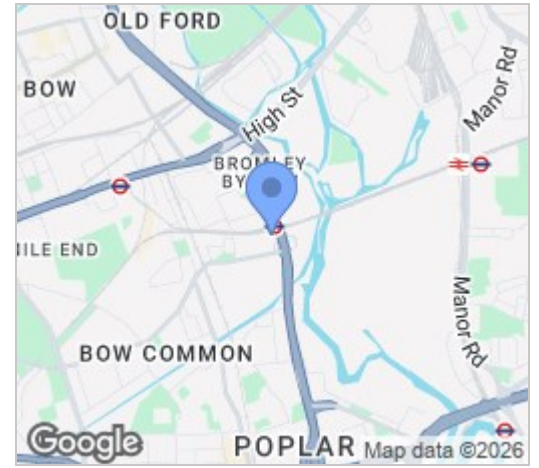
## Floor Plan

Flat 83, Marner Point, 1, Jefferson Plaza, London, E3 3QB

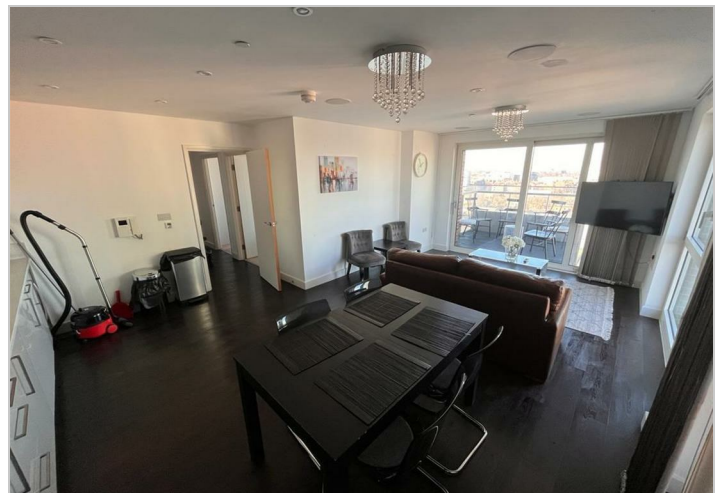
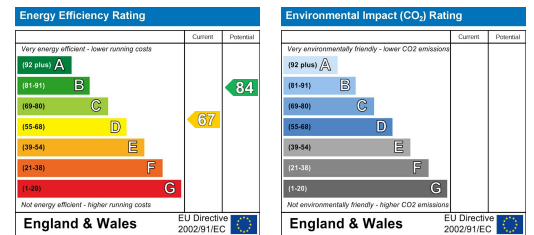


Total Area: 78.5 m<sup>2</sup> ... 845 ft<sup>2</sup> (excluding balcony)  
All measurements are approximate and for display purposes only

## Area Map



## Energy Efficiency Graph



These particulars, whilst believed to be accurate are set out as a general outline only for guidance and do not constitute any part of an offer or contract. Intending purchasers should not rely on them as statements of representation of fact, but must satisfy themselves by inspection or otherwise as to their accuracy. No person in this firm's employment has the authority to make or give any representation or warranty in respect of the property.