



Draycott Place, SW3

£1,050,000

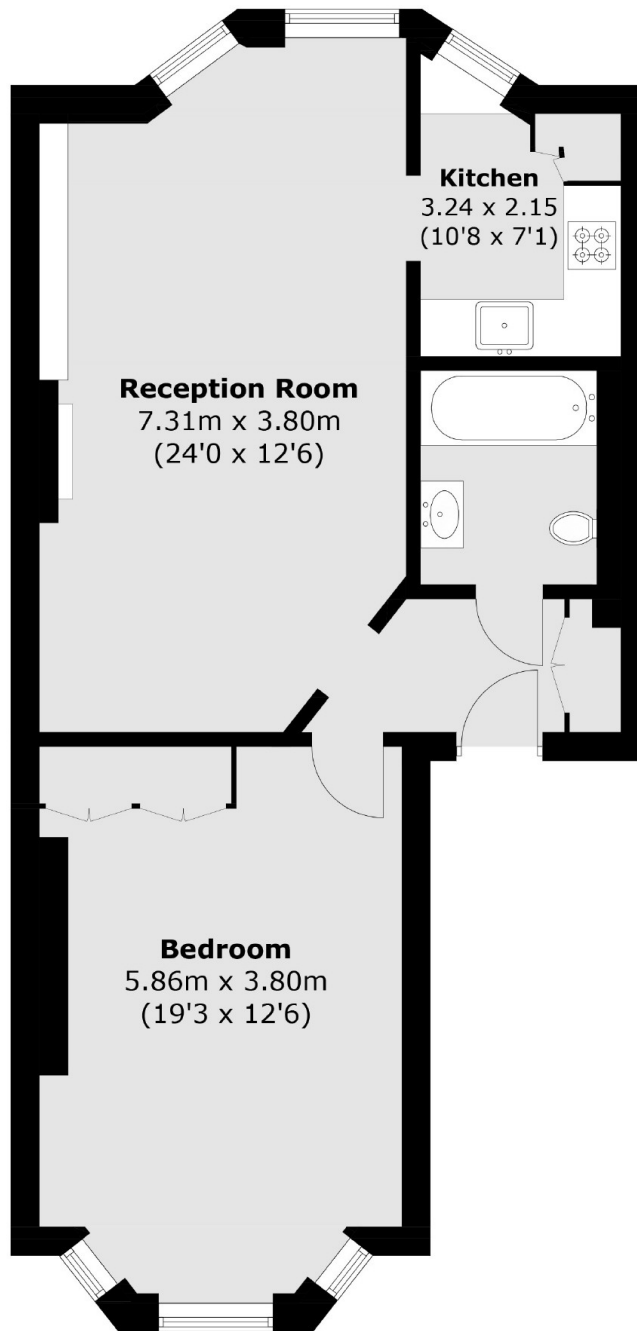
A stunning one bedroom apartment moments from Pavilion Road and Duke of York Square. This property has been completely refurbished to the highest of standards by the current owners.

Draycott Place runs parallel to the King's Road which is home to plenty of boutique shops and restaurants. Sloane Square, Burton Court and Pavilion Road are all within walking distance.

Features

- Beautiful Condition
- High Ceilings
- Second Floor
- Long Leasehold
- Close to Pavilion Road
- Smart Communal Areas

Draycott Place, London, SW3



Second Floor

Total area (approx.): 63.7 sq. m (685.7 sq. ft)