

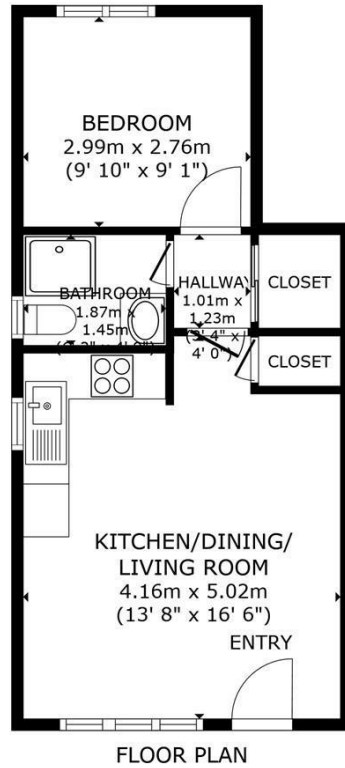
92 MANOR FIELDS
HORSHAM, RH13 6SB

£195,000
LEASEHOLD - SHARE OF FREEHOLD

Eltons are delighted to present to the market this beautifully presented one bedroom ground floor Maisonette.

ELTONS

Estate Agents



GROSS INTERNAL AREA
FLOOR PLAN 35.0 m² (376 sq.ft.)
TOTAL : 35.0 m² (376 sq.ft.)
SIZES AND DIMENSIONS ARE APPROXIMATE, ACTUAL MAY VARY.

ELTONS

Estate Agents



Energy Efficiency Rating		Current	Potential
Very energy efficient - lower running costs			
(92 plus) A			
(81-91) B			
(69-80) C			78
(55-68) D	62		
(39-54) E			
(21-38) F			
(1-20) G			
Not energy efficient - higher running costs			
England & Wales		EU Directive 2002/91/EC	

Agents Note: Whilst every care has been taken to prepare these particulars, they are for guidance purposes only. All measurements are approximate and are for general guidance purposes only and whilst every care has been taken to ensure their accuracy, they should not be relied upon and potential buyers/tenants are advised to recheck the measurements

Eltons Estate Agents Horsham
13 - 15 Queen Street
Horsham
West Sussex
RH13 5AA

01403 299 771
sales@eltons.co.uk
eltons.co.uk

ELTONS

Estate Agents