



**Chardan, High Street, Netheravon Salisbury SP4 9RT**

**welcome to**

**Chardan High Street, Netheravon Salisbury**

Exceptional Five Bedroom Detached Family Home in the heart of Netheravon

Viewing is recommended and is being sold with No Onward Chain



## Front

To the front of the property there is a private gated driveway

## Entrance Hall

Tiled flooring, understairs storage, front aspect double glazed window

## Downstairs Cloak Room

Tiled flooring, side aspect double glazed window, w/c with built-in wash hand basin vanity

## Lounge

Carpet, dual aspect double glazed window, French doors into kitchen/diner

## Kitchen/Diner

Dual aspect double glazed windows, double glazed French doors leading to patio area, electric induction hob, extractor hood, built-in double oven, Tiled hall way leading to utility room

## Utility Room/ Butlers Pantry

Tiled flooring, side aspect double glazed window, upper and lower cabinets, space for washing machine and tumble dryer. Door leading into study/family room

## Study/Family Room

Tiled flooring, side aspect double glazed window, access to store room

## Landing

Carpet, airing cupboard

## Main Bedroom Suite

Carpet, side aspect double glazed window, three double built-in wardrobes access to En-Suite.

## En-Suite

Tiled flooring, Oak units with Quartz tops, walk-in shower side aspect Velux window, underfloor heating

## Bedroom Two

Carpet, radiator, front aspect double glazed window

## En-Suite

Tiled flooring, front aspect double glazed window, w/c, sink, shower cubicle

## Bedroom Three

Carpet, radiator, rear aspect double glazed window

## Bedroom Four

Carpet, radiator, rear aspect double glazed window

## Bedroom Five

carpet, radiator, rear aspect double glazed window

## Family Bathroom

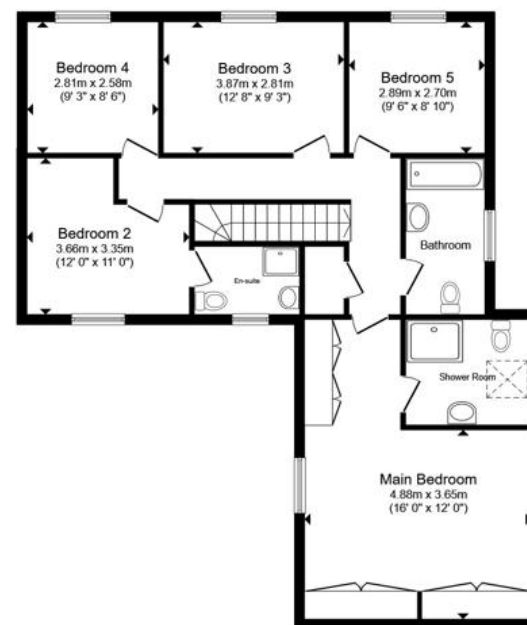
Tiled flooring, side aspect double glazed window, bath, w/c, sink

## Rear Garden

The property boasts a private wrap around garden with children's play area, patio and lawn



Ground Floor



First Floor

Total floor area 188.0 m<sup>2</sup> (2,023 sq.ft.) approx

This floor plan is for illustrative purposes only. It is not drawn to scale. Any measurements, floor areas (including any total floor area), openings and orientation are approximate. No details are guaranteed, they cannot be relied upon for any purpose and they do not form part of any agreement. No liability is taken for any error, omission or misstatement. A party must rely upon its own inspection(s). Powered by [www.propertybox.io](http://www.propertybox.io)

 fox & sons



**view this property online** [fox-and-sons.co.uk/Property/AME105903](http://fox-and-sons.co.uk/Property/AME105903)



welcome to

## Chardan High Street, Netheravon Salisbury

- Detached Five Bedroom Family Home
- Private Gated Driveway
- Three Reception Rooms with Spacious kitchen Perfect for Entertaining
- Access to Schools, Amenities and Shops
- Access to Transport Links

Tenure: Freehold EPC Rating: E

Council Tax Band: F

**£675,000**



Please note the marker reflects the postcode not the actual property

**view this property online** [fox-and-sons.co.uk/Property/AME105903](https://fox-and-sons.co.uk/Property/AME105903)



Property Ref:  
AME105903 - 0002

1. MONEY LAUNDERING REGULATIONS Intending purchasers will be asked to produce identification documentation at a later stage and we would ask for your co-operation in order that there is no delay in agreeing the sale. 2. These particulars do not constitute part or all of an offer or contract. 3. The measurements indicated are supplied for guidance only and as such must be considered incorrect. Potential buyers are advised to recheck measurements before committing to any expense. 4. We have not tested any apparatus, equipment, fixtures or services and it is in the buyers interest to check the working condition of any appliances. 5. Where an EPC, or a Home Report (Scotland only) is held for this property, it is available for inspection at the branch by appointment. If you require a printed version of a Home Report, you will need to pay a reasonable production charge reflecting printing and other costs. 6. We are not able to offer an opinion either written or verbal on the content of these reports and this must be obtained from your legal representative. 7. Whilst we take care in preparing these reports, a buyer should ensure that his/her legal representative confirms as soon as possible all matters relating to title including the extent and boundaries of the property and other important matters before exchange of contracts.

  
fox & sons



**01980 624155**



Amesbury@fox-and-sons.co.uk



49 Salisbury Street, AMESBURY, Wiltshire, SP4 7AW



**fox-and-sons.co.uk**