



**Huntingfield Road, SW15**

**£649,950**

**Dexters**



## Huntingfield Road, SW15

Set on the ever-popular Huntingfield Road, this beautifully presented two-bedroom period house has been lovingly renovated by the current owners and offers a wonderful blend of character, light and thoughtful styling across approximately 660 sq ft.

The ground floor features a welcoming reception room with Reclaimed French Oak hardwood flooring, bespoke shelving and space for both relaxing and dining, flowing through to a well-appointed kitchen with direct access to a private rear garden ideal for entertaining or enjoying a quiet morning coffee. Upstairs, there are two generous double bedrooms, both filled with natural light.

The property is ideally located for the amenities of Putney and Barnes, with excellent transport links including Putney mainline station, East Putney Underground (District Line) and a range of frequent bus routes providing easy access into Central London. Green spaces such as Putney Heath and the River Thames are also close by, making this an excellent choice for buyers seeking a balance of connectivity and outdoor lifestyle.

### Features

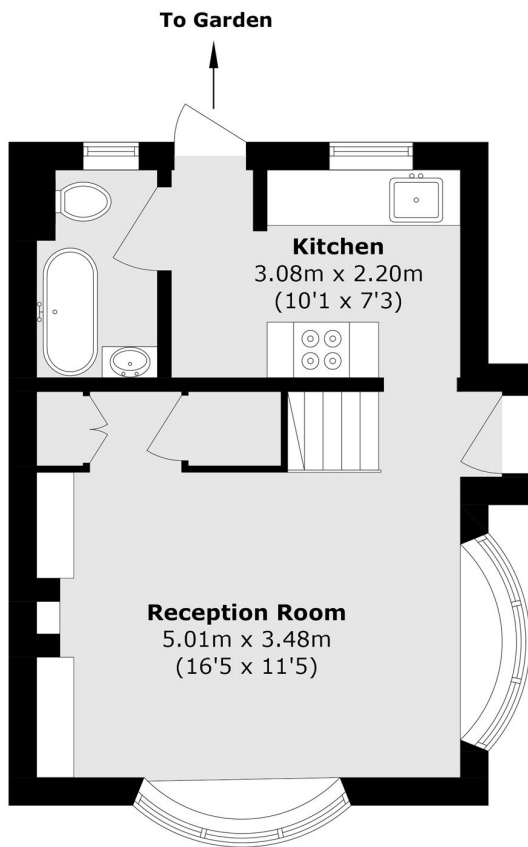
- Freehold House
- Private Garden
- Two Bedrooms
- Recently renovated
- End of Terrace
- East Facing Garden



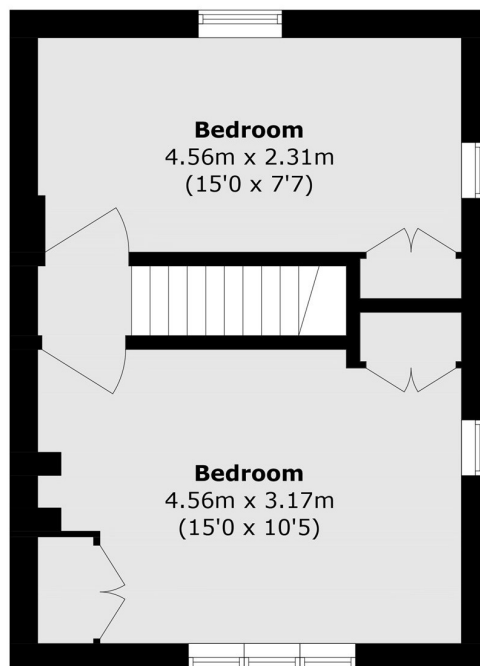




# Huntingfield Road, London, SW15



**Ground Floor**



**First Floor**

Total area (approx.): 61.3 sq. m (659.8 sq. ft)