



 4  2  3

Heimat Heol Gelli Fawr, Five Roads Llanelli

offers over £525,000

 peter  
alan

01792 894422  
gorseinon@peteralan.co.uk



## About the property

Nestled in the desirable location of Cwtsh Ni, Heol Gelli Fawr, Five Roads, this impressive four-bedroom detached property offers the perfect blend of comfort, style, and semi-rural charm. From its picturesque frontage to its spacious interior, this home is ideal for families seeking both tranquillity and convenience.

Upon entering, you are welcomed by a generous lounge and dining area, and a second reception room designed for both relaxation and entertaining. The practical, well-appointed kitchen is complemented by a separate utility room, ensuring everyday tasks are made simple and organised. There is a study and downstairs W.C. that adds further convenience.

Upstairs, the home continues to impress with four double bedrooms, including a master bedroom complete with a private en-suite. Each room is well-sized, bright, and adaptable to suit modern family living.

One of the standout features of this property is its remarkable countryside outlook, offering peaceful views and a true sense of escape. Externally, the home boasts off-road parking for up to eight vehicles, along with a detached single garage, making it perfect for busy households or those with multiple vehicles.

This property is truly a gem—beautifully presented, spacious throughout, and offering that sought-after semi-rural feel while still being within easy reach of local amenities. A wonderful opportunity for families looking for a stylish and generous forever home.

## Accommodation

### Living Room/Dining Room

25' 6" max x 14' 4" max ( 7.77m max x 4.37m max )

A bright and well-proportioned reception space offering ample room for a large dining table and additional furniture. Attractive ceiling detailing and a feature chandelier add character, while neutral décor and wood-effect flooring create a warm, inviting feel. The room benefits from excellent natural light and flows seamlessly into a comfortable living area with space for generous seating, making it ideal for both family life and entertaining.

### Kitchen

19' 3" x 10' 8" ( 5.87m x 3.25m )

A bright and spacious kitchen fitted with modern units and wood-effect worktops, featuring a central island with space for casual dining. The room benefits from a range cooker, ample storage and excellent natural light from large windows and garden doors, making it ideal for everyday family use.

### Utility Room

### W.C

### Study

7' 5" x 5' 5" ( 2.26m x 1.65m )

A well-presented study providing an ideal space for home working. The room offers ample space for a desk and storage, is finished in neutral décor, and benefits from a window enjoying pleasant views over the surrounding countryside, creating a bright and comfortable workspace.





### Bedroom 1

14' 4" max x 11' 5" max ( 4.37m max x 3.48m max )  
A generous double bedroom finished in neutral décor and benefiting from wood-effect flooring, providing ample space for bedroom furniture and storage. The room enjoys excellent natural light from dual windows, offering pleasant open views and creating a bright, relaxing atmosphere.

### Ensuite

The en-suite is fitted with a modern white suite comprising a shower cubicle, wash-hand basin and WC, complemented by contemporary wall finishes and a window providing both natural light and ventilation.

### Bedroom 2

14' 2" x 10' 6" ( 4.32m x 3.20m )  
A bright and well-proportioned double bedroom finished in neutral tones with wood-effect flooring. The room accommodates a double bed and benefits from built-in wardrobes providing excellent storage. A large window allows for plenty of natural light and enjoys pleasant views, creating a comfortable and relaxing space.



### Bedroom 3

16' x 9' 7" ( 4.88m x 2.92m )  
A well-presented double bedroom finished in neutral décor with wood-effect flooring. The room offers space for freestanding furniture and benefits from a window providing good natural light and pleasant outlooks. A comfortable and versatile bedroom, ideal for family use or guests.

### Bedroom 4

10' 1" x 10' 9" ( 3.07m x 3.28m )  
A bright and versatile room finished in neutral décor with wood-effect flooring. The space benefits from a large window enjoying open countryside views, allowing for excellent natural light. Well proportioned and flexible, the room is ideal for use as a bedroom, home office, or hobby room.

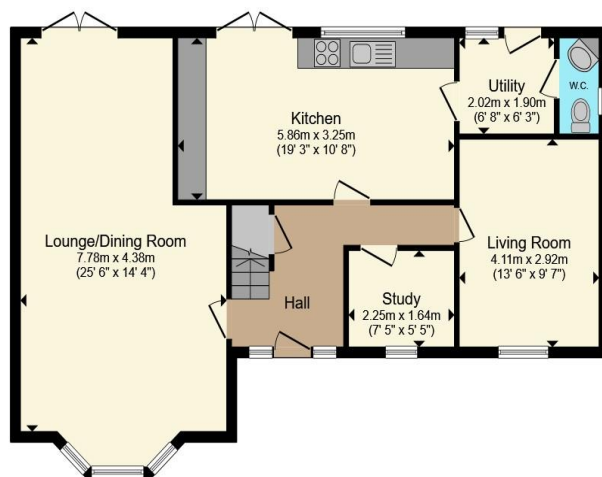




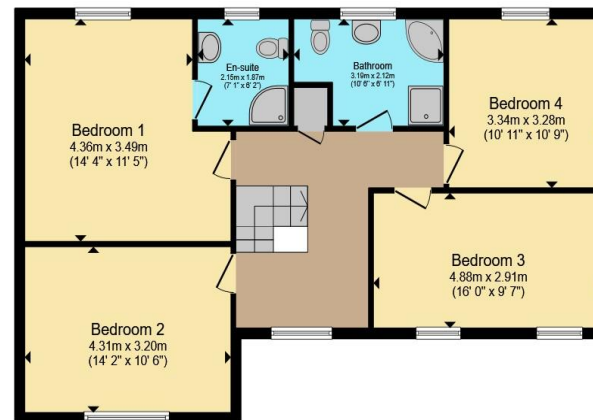


01792 894422

gorseinon@peteralan.co.uk



Ground Floor



First Floor

Total floor area 166.0 m<sup>2</sup> (1,787 sq.ft.) approx

This floor plan is for illustrative purposes only. It is not drawn to scale. Any measurements, floor areas (including any total floor area), openings and orientation are approximate. No details are guaranteed, they cannot be relied upon for any purpose and they do not form part of any agreement. No liability is taken for any error, omission or misstatement. A party must rely upon its own inspection(s). Powered by [www.propertybox.io](http://www.propertybox.io)



## Important Information

Note while we endeavour to make our sales details accurate and reliable, if there is any point which is of particular interest to you, please contact the office and we will be pleased to confirm the position for you. We have not personally tested any apparatus, equipment, fixtures, fittings or services and cannot verify they are in working order or fit for their purposes. Nothing in these particulars is intended to indicate that carpets or curtains, furnishings or fittings, electrical goods (whether wired or not), Gas fires or light fittings or any other fixtures not expressly included form part of the property offered for sale. This computer generated floorplan, if applicable, is intended as a general guide to the layout and design of the property. It is not to scale and should not be relied upon for dimensions. Tenure: We cannot confirm the tenure of the property as we have not had access to the legal documents. The buyer is advised to obtain verification from their solicitor or surveyor.

Peter Alan Limited is registered in England and Wales under company number 2073153, Registered Office is Cumbria House, 16-20 Hockliffe Street, Leighton Buzzard, Bedfordshire, LU7 1GN. VAT Registration Number is 500 2481 05. For activities relating to regulated mortgages and non-investment insurance contracts, Peter Alan Limited is an appointed representative of Connells Limited which is authorised and regulated by the Financial Conduct Authority. Connells Limited's Financial Services Register number is 302221. Most buy-to-let mortgages are not regulated.

