



Guide Price
£350,000

Freehold

3x  1x  1x 

**Salisbury Road,
Penenden Heath,
Maidstone, Kent ME14**

OVER 60?

Secure this property
for up to **59% less!**

Wards
Helping you move forwards



Main features

- Beautifully presented throughout
- A wealth of period features
- Sought after road in a popular location
- Close to Maidstone East station
- Conveniently situated within walking distance to a variety of shops, schools and amenities

Accommodation

GROUND FLOOR

Hallway
 Cloakroom
 Lounge: 11'11" x 11'0" (3.63m x 3.36m)
 Dining Area: 13'11" x 9'0" (4.24m x 2.75m)
 Kitchen: 21'0" x 6'0" (6.41m x 1.83m)

BASEMENT

Cellar: 9'0" x 8'0" (2.75m x 2.44m)

FIRST FLOOR

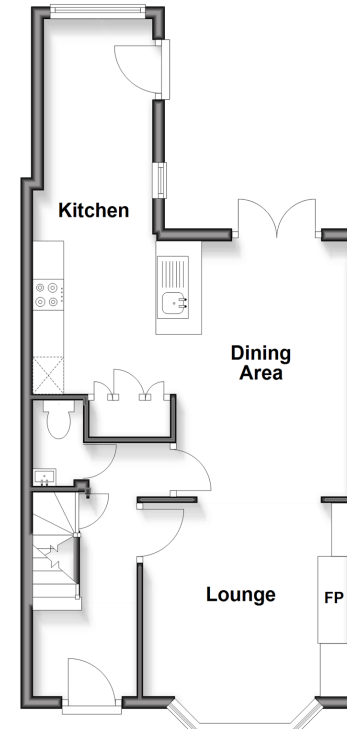
Landing
 Bedroom 1: 13'0" x 9'0" (3.97m x 2.75m)
 Bedroom 2: 10'0" x 10'0" (3.05m x 3.05m)
 Bedroom 3: 10'0" x 7'0" (3.05m x 2.14m)
 Bathroom

OUTSIDE

Rear Garden
 Front Garden

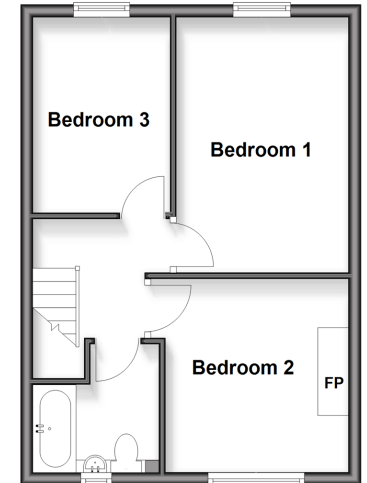
Ground Floor

Approx. 44.9 sq. metres (483.4 sq. feet)



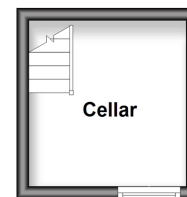
First Floor

Approx. 37.7 sq. metres (405.4 sq. feet)



Basement

Approx. 6.8 sq. metres (73.3 sq. feet)



Call Maidstone - 01622 683737 ■ wardsof Kent.co.uk

■ Through a Homewise Home For Life Plan people aged 60+ can secure this property for up to 59% less, by purchasing a Lifetime Lease



13159430/20260326/CV/AS