



Turners Place, Holmer Green

£1,650 pcm

Three bedroom maisonette • Modern bathroom and kitchen • Separate Lounge with large balcony access • Centrally located in Holmer Green • Available now on an unfurnished basis



The Wye Partnership Lettings

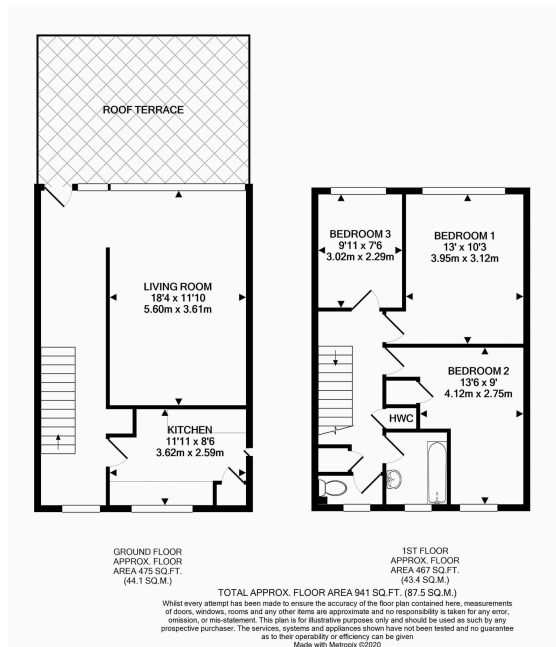
129 Main Road, Naphill - HP14 4SA

01494 358358 • lettings@wyeres.co.uk • www.wyeres.co.uk/

Welcome to this spacious three bedroom maisonette, situated on two floors and perfectly situated right in the heart of Holmer Green. If you are looking for a home with plenty of room to spread out, this place ticks all the boxes. Inside you will find a bright and welcoming lounge, which is separate from the modern kitchen and offers a great spot for relaxing or entertaining friends. The lounge also has direct access to a large balcony.

Each of the three bedrooms offers comfortable accommodation, whether you need space for a growing family, guests, or a home office.

Location-wise, you are right in the centre of Holmer Green, so shops, cafes, and local amenities are all within easy reach. The property is available now on an unfurnished basis.



- Three bedroom maisonette
- Modern bathroom and kitchen
- Separate Lounge with large balcony access
- Centrally located in Holmer Green
- Available now on an unfurnished basis
- EPC Rating D, Council Tax C

