



## Clarkson Crescent, E17

### £385,000

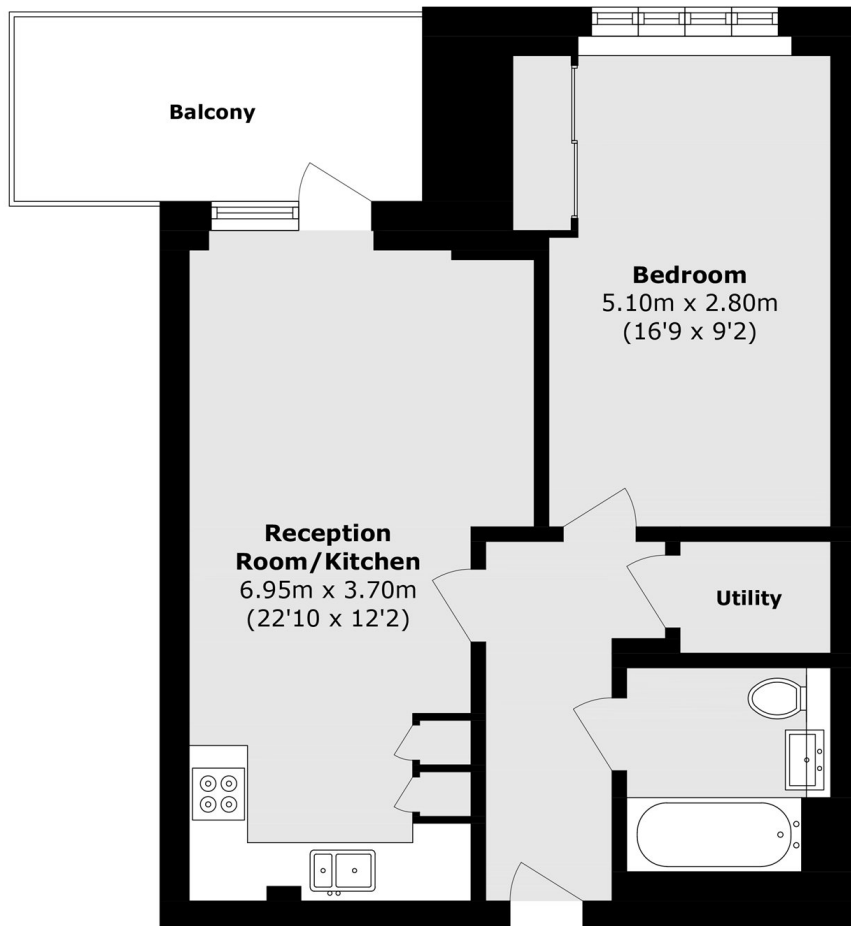
A modern, one double bedroom apartment with a large private balcony. This property benefits from open plan living, plenty of built in storage and built in appliances. Built in 2022 the development has been thoughtfully planned out and offers residents secure bike storage, communal gardens, a playground and basketball courts. It is being sold chain free and makes an ideal purchase for a first time buyer.

Clarkson Crescent is part of a regeneration project in the Wood Street and Walthamstow area. Wood Street Station is only 0.3 miles away offering easy access to Walthamstow Central and trains direct to Liverpool Street Station. Nearby Orford Road is partly pedestrianised with many shops, cafés, bars and restaurants to choose from.

### Features

- Modern Development
- One Double Bedroom
- Private Balcony
- Chain Free
- Open Plan
- Secure Bike Storage

# Clarkson Crescent, London, E17



Total area (approx.): 53.3 sq. m (573.7 sq. ft)

Balcony area (approx.): 7.9 sq. m (85.0 sq. ft)