



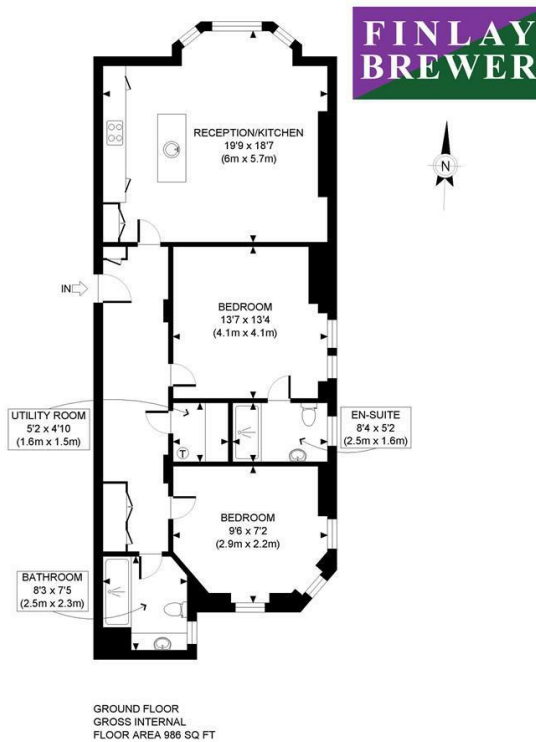
## GRANVILLE MANSIONS W12





- 2 BEDROOMS • COMPLETELY REFURBISHED TO A VERY HIGH STANDARD • WOODEN FLOORS AND HIGH CEILINGS • SPACIOUS OPEN PLAN RECEPTION • STYLISH FITTED KITCHEN WITH ISLAND • EPC RATING D • COUNCIL TAX BAND E • AVAILABLE 6TH JULY • UNFURNISHED

Exceptional 2 bedroom mansion flat, refurbished to a high standard throughout, with wooden floors and high ceilings, spacious open plan reception, stylish fitted kitchen and island, brand new bathroom and en suite shower room and excellent storage. Located very close to Westfield London, White City House and the transport links at Shepherds Bush. Available 6th July.



**PROPERTY PHOTO PLANS**.co.uk  
ONE STOP SHOP FOR PROPERTY MARKETING

Whilst every attempt has been made to ensure the accuracy of the floor plan contained here, measurements of the doors, windows, rooms and any other items are approximate and no responsibility is taken for any errors, omissions, or miss-statement. This plan is for illustrative purposes only and should be used as such by any prospective client. The services, systems and appliances shown have not been tested and no guarantee as to the operability or efficiency can be given.

138 Shepherds Bush Road, London, W6 7PB  
Tel: 020 7371 4071 [lettings@finlaybrewer.co.uk](mailto:lettings@finlaybrewer.co.uk)