



**6 Norton Avenue, Sale, M33 5HE**

**£530,000**

[www.jordanfishwick.co.uk](http://www.jordanfishwick.co.uk)









# jordan fishwick

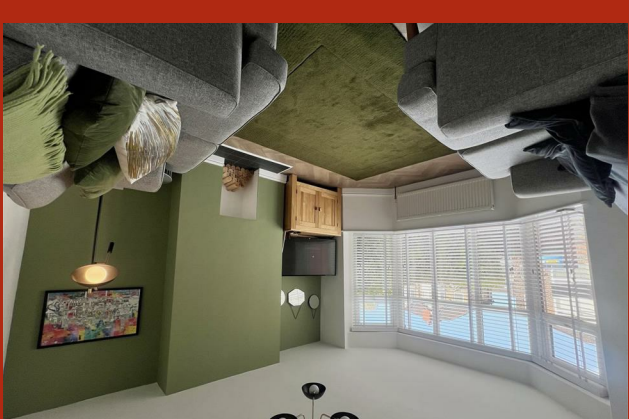
- BEAUTIFULLY EXTENDED FOUR BEDROOM HOME • STUNNING OPEN PLAN KITCHEN & LIVING AREA
- HIGHLY SOUGHT AFTER LOCATION NEAR ASHTON ON MERSEY • SPACIOUS PLOT WITH AMPLE OFFROAD PARKING
- ELEGANT MASTER BEDROOM WITH BUILT IN WARDROBES • TASTEFULLY DECORATED AND MOVE IN READY
- EPC RATING C AND COUNCIL TAX BAND C • A MUST VIEW PROPERTY - EXPECTED TO SELL FAST!

Introducing this beautifully extended and immaculately presented four-bedroom semi-detached family home, perfectly positioned in one of Sale's most sought-after and peaceful residential areas, just moments from the highly regarded Ashton on Mersey School.

This exceptional property combines contemporary open-plan living, luxury finishes, and a warm, welcoming atmosphere, making it a truly outstanding family home that offers both style and practicality in equal measure.

From the moment you arrive, the property immediately impresses with its striking curb appeal, featuring a well-maintained frontage, attractive brickwork, and a spacious driveway providing ample off-road parking. Step inside, and you're greeted by a sense of space, quality, and refinement that continues throughout the entire home. Every detail has been carefully considered, and the result is a property that feels both modern and homely, ready for any family to move straight into.

Properties of this calibre do not stay on the market for long, so early viewing is highly recommended!

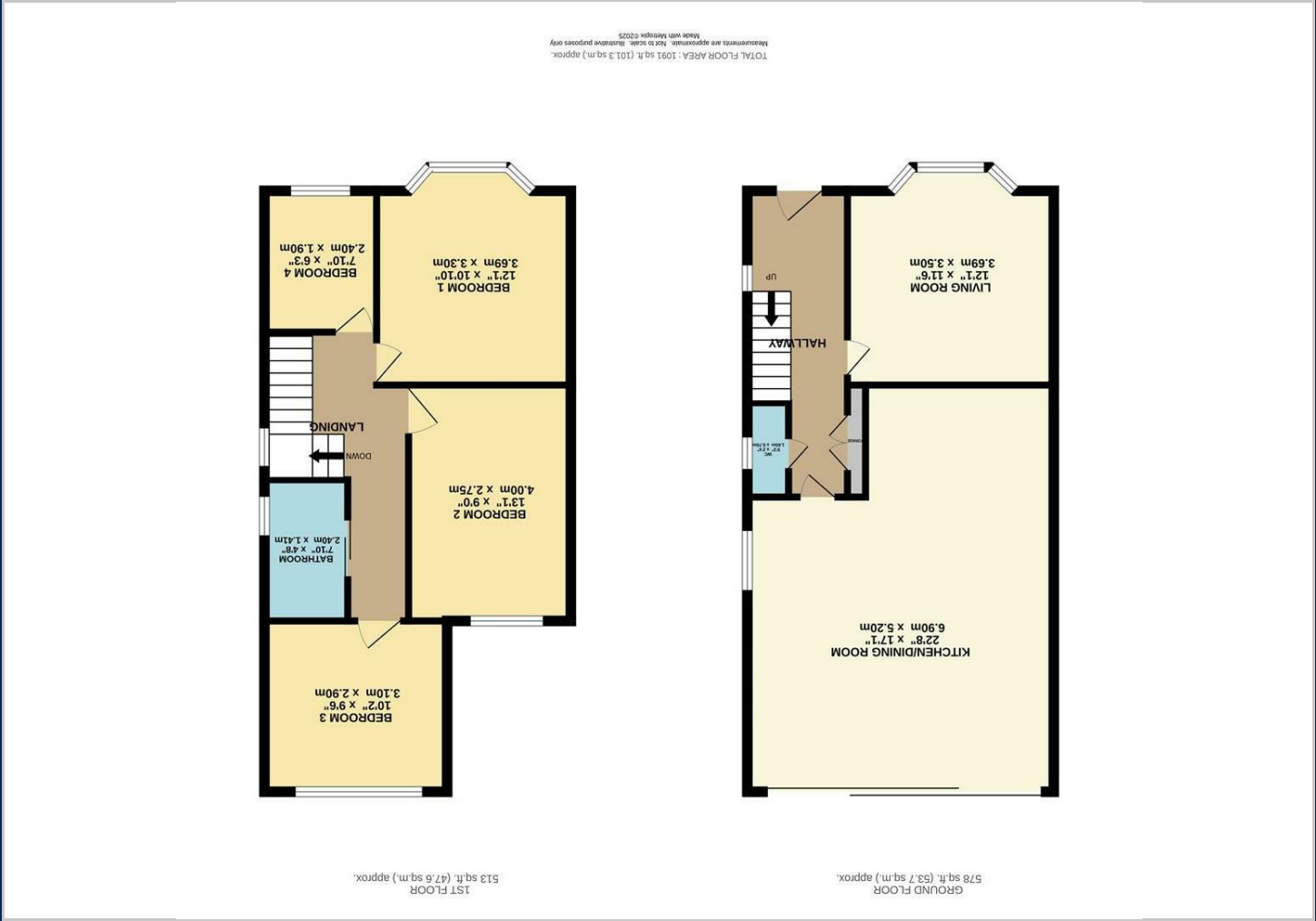






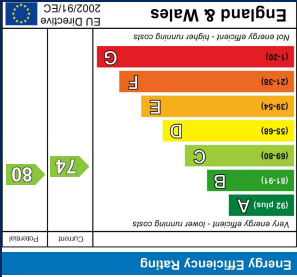


Floor Plans

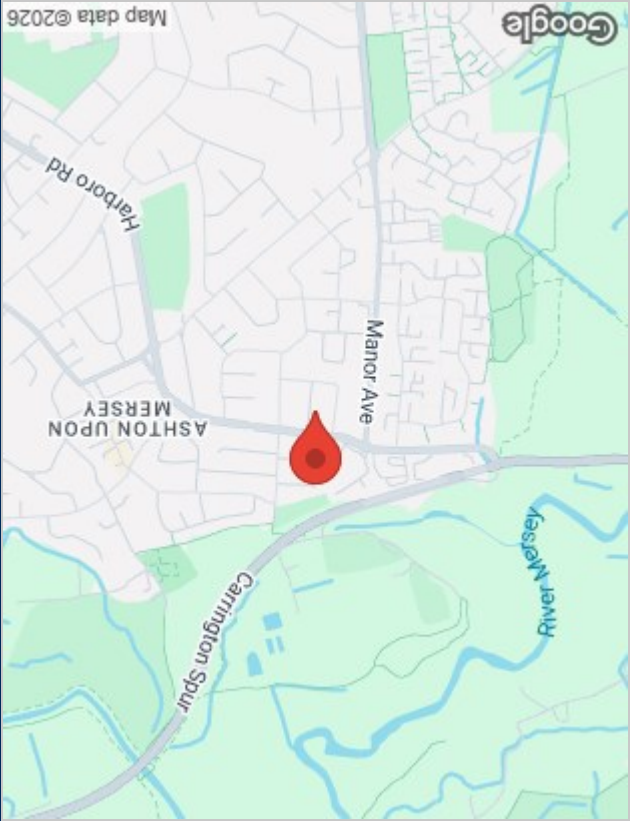


Viewing

Please contact our Sale Office on 0161 962 2828 if you wish to arrange a viewing appointment for this property or require further information.



Energy Performance Graph



The particulars are set out as a general outline only for the guidance of intended purchasers or lessees, and do not constitute, any part of a contract. Nothing in these particulars shall be deemed to be a statement that the property is in good structural condition or otherwise nor that any of the services, appliances, equipment or facilities are in good working order. Purchasers should satisfy themselves of this prior to purchasing.