

Manstone Road, NW2

£350 Per week

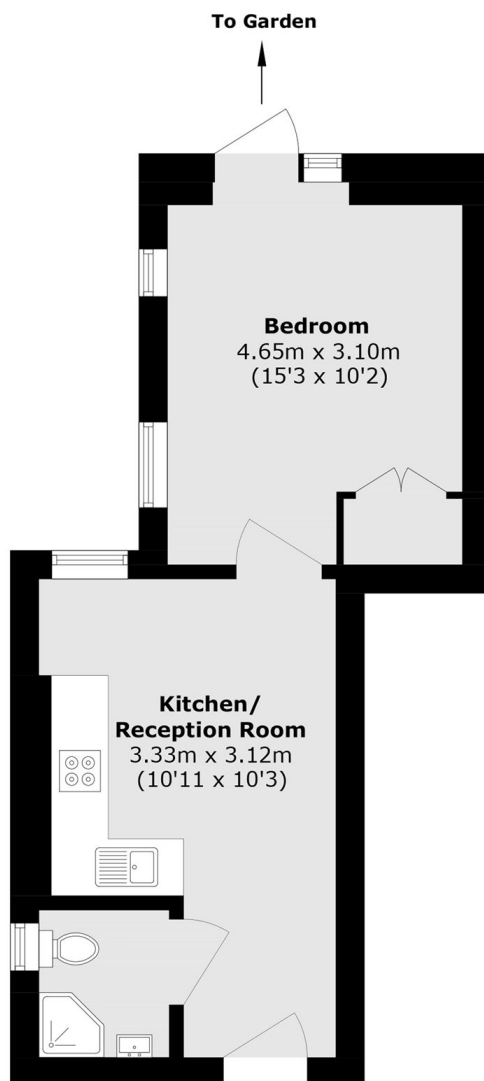
This one bedroom garden flat is ideally situated in Cricklewood with easy access to West Hampstead and Kilburn. The property has open plan living area with a fitted kitchen, a tiled shower room and direct access to the garden.

Manstone Road is well located in Cricklewood with many local amenities, shops and restaurants. You also have excellent transport links with many bus routes into the city, West Hampstead, Kilburn and Cricklewood Thameslink stations are nearby.

Features

- Open Plan
- Tiled Bathroom
- Spacious Bedroom
- Direct Garden Access
- Ground Floor
- Ideally Situated

Manstone Road,
London, NW2



Total area (approx.): 28.6 sq. m (307.8 sq. ft)