



JOWEBSTER

Apartment E101
The Montevetro Building, SW11



Property Attributes

- o Reception Room with River Views
- o Kitchen
- o Private Balcony
- o Three Bedrooms
- o Two Bathrooms (One En Suite)
- o One Shower Room
- o Study
- o Car Parking Space
- o Gym; Sauna and Tennis Court
- o 24/7 Security and Concierge



Terms

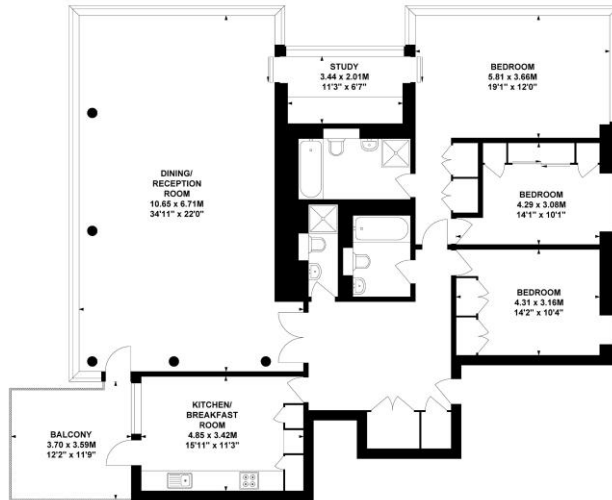
- o Price: £2,500,000
- o Borough: London Borough of Wandsworth
- o Tenure: Share of Freehold 971 approx. years remaining
- o Service Charge: Approx. £31,229 per annum
- o Ground Rent: peppercorn
- o Council Tax Band: Band H



MONTEVETRO, CHURCH ROAD, SW11

Approximate Gross Internal Area

185.87 sq m / 2001 sq ft



Tenth Floor

Not to scale, for guidance only and must not be relied upon as a statement of fact.
All measurements and areas are approximate only

+44 (0) 20 7349 7055
sales@jowebster.com

Misdescription Act

We wish to advise prospective purchasers that these sales particulars are believed to be correct, but their accuracy is in no way guaranteed, nor do they form any part of contract. We have not carried out a detailed survey nor tested the services, appliances or specific fittings. Measurements are approximate.