



The Glebe Evesham Road, Fladbury

£800,000 Freehold

Substantial 6-bed former farmhouse in Fladbury, set on 2.5 acres with stables, workshop, and double garage. Over 3,100 sq ft. Character features, modern kitchen, and village amenities nearby.



Fladbury is a picturesque village set on the banks of the River Avon, well regarded for its strong community and excellent local amenities. These include a popular primary school, village hall, social clubs, two public houses, a butcher's shop and a range of sporting facilities including cricket, football and tennis, as well as a riverside canoe club. Evesham Golf Club is also close by. The nearby market towns of Evesham and Pershore provide a wider range of shops, restaurants and services, while Evesham railway station offers direct links to London Paddington. The area is also well connected by road, with access to the M5, M40 and M42.

Council Tax band: G

Tenure: Freehold

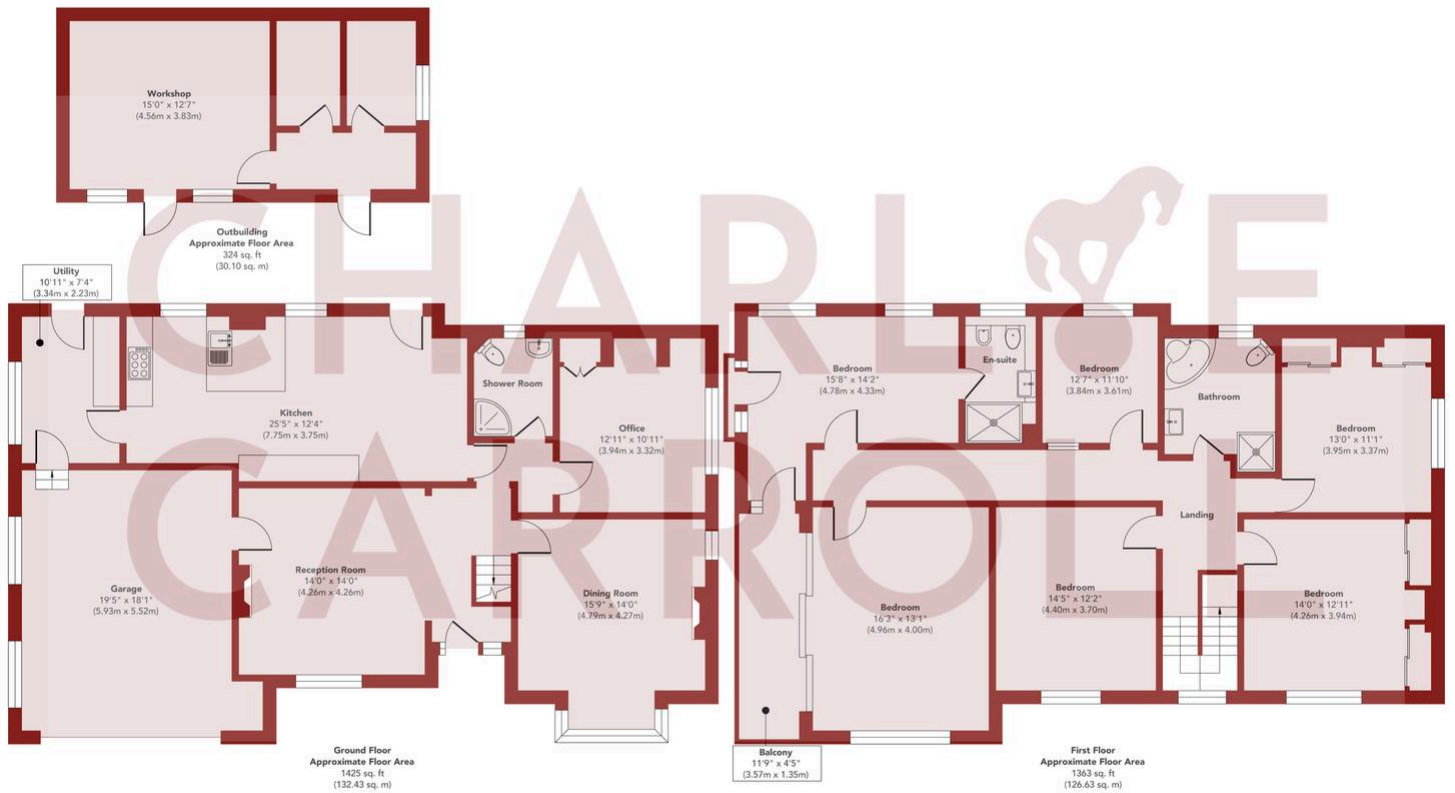
EPC Energy Efficiency Rating: G

EPC Environmental Impact Rating: G



- Substantial former farmhouse offering over 3,100 sq ft of versatile living space, thoughtfully extended to suit modern family life.
- Set within approximately 2.5 acres, providing excellent privacy and space, ideal for equestrian use or lifestyle buyers.
- Six bedrooms including a generous principal suite, with flexible layout suited to growing families or multi-generational living.
- Striking Pippy Oak Kitchen with marble worktops, steam oven





Approx. Gross Internal Floor Area 3112 sq. ft / 289.16 sq. m (Including Garage & Outbuilding)
Approx. Gross Internal Floor Area 2474 sq. ft / 229.87 sq. m (Excluding Garage & Outbuilding)

Illustration for identification purposes only, measurements are approximate, not to scale

Produced by Elements Property