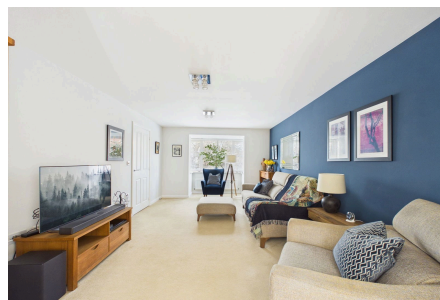


Chantler Lane, Horsham

Guide Price £650,000

4 2 2



A spacious Detached Family Home located towards the end of a Small Cul De Sac, boasting Four Double Bedrooms, an impressive 25ft Kitchen Diner and a Detached Garage.

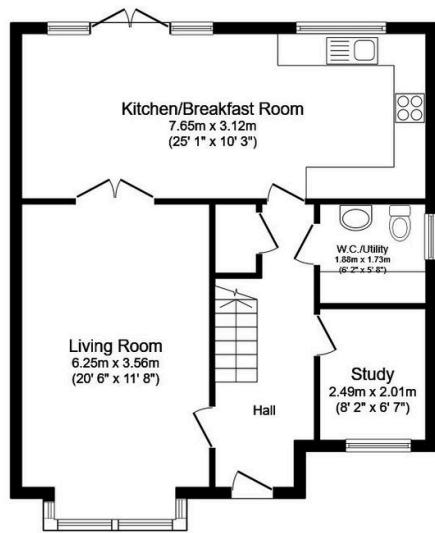
Tenure: Freehold

Council Tax Band: F

EPC: Current C - Potential B

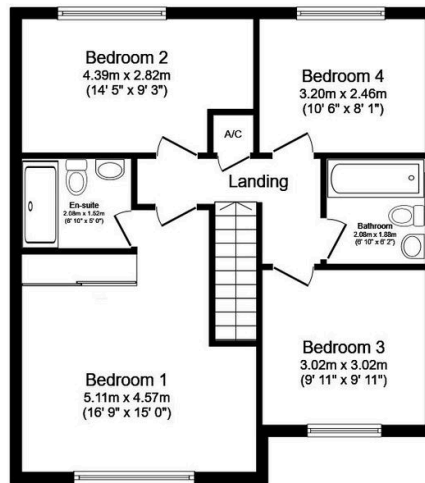
Key Features

- Watch Our Video Tour
- En Suite To Principal Bedroom
- Bay Fronted Living Room
- Detached Garage & Driveway Parking
- Stylish Family Bathroom
- Four Generous Double Bedrooms
- 25ft Kitchen Dining Room
- Study
- Cul De Sac Location
- Overlooks Bridal Path



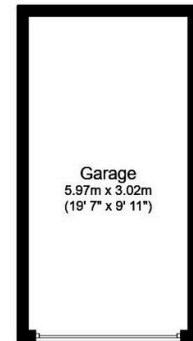
Ground Floor

Floor area 64.8 sq.m. (698 sq.ft.)



First Floor

Floor area 62.8 sq.m. (676 sq.ft.)



Garage

Floor area 18.0 sq.m.
(193 sq.ft.)

Total floor area: 145.5 sq.m. (1,567 sq.ft.)

This floor plan is for illustrative purposes only. It is not drawn to scale. Any measurements, floor areas (including any total floor area), openings and orientations are approximate. No details are guaranteed, they cannot be relied upon for any purpose and do not form any part of any agreement. No liability is taken for any error, omission or misstatement. A party must rely upon its own inspection(s). Powered by www.Propertybox.io