



LAURA COSTELLO-SMEDLEY

POWERED BY
exp UK

Mount Pleasant Road, Davenham

Offers In Region Of £110,000

🛏️ 1 🚿 1 🚿 1



This is a fantastic opportunity for a first-time buyer looking to get onto the property ladder. This delightful 1st floor maisonette is new to the market and available with no onward chain. Located in the heart of Davenham, Northwich, with close proximity to the A556 - ideal for commuters. This property will prove to be really popular, so book your viewing now to avoid missing out!

The Property:

A first-floor maisonette with one double bedroom, kitchen, living room and bathroom with a front garden and driveway.

Kitchen

An array of cupboards and work surfaces, space for a washing machine and dryer. Window to the side.

Living Room

A spacious area with a laminate floor. Space for sofas and a chair, a gas fireplace (untested) and a window to the front and a balcony to the rear. TV points and radiator.

Bathroom

White suite with a vinyl floor, WC sink and bath with a shower over and a screen. Large storage cupboard.

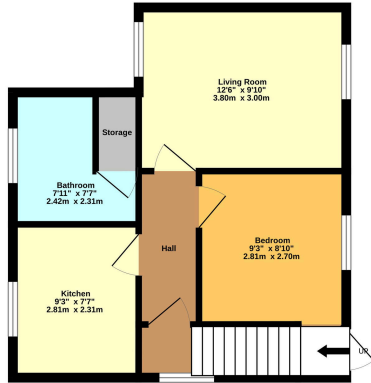
Bedroom

A double room with a laminate floor and a walk-in wardrobe. Window to the front of the property.

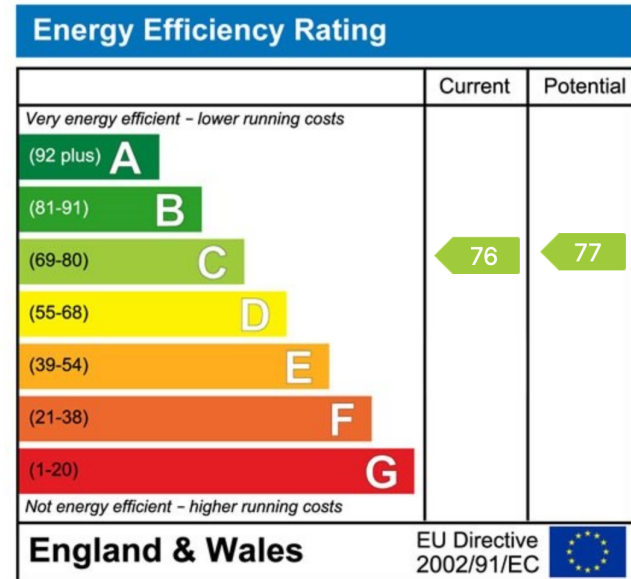




Ground Floor
408 sq.ft. (37.9 sq.m.) approx.



TOTAL FLOOR AREA: 408 sq.ft. (37.9 sq.m.) approx.
When areas are given they are based on the internal dimensions of the finished construction work, measurements of which, wherever possible, are taken from the floor to ceiling and from wall to wall. The area of any protrusions, such as balconies, is included in the total area. The area of any protrusions, such as balconies, is included in the total area. The area of any protrusions, such as balconies, is included in the total area. The area of any protrusions, such as balconies, is included in the total area.



laura.costello-smedley@exp.uk.com

01606 633 031 / 01270 295 996

<https://lauracostellosmedley.exp.uk.com>