



ESTATE AGENTS

[www.cwestateagents.co.uk](http://www.cwestateagents.co.uk)



## St. Georges Road, Winsford CW7 1DA

Offers in excess of £190,000

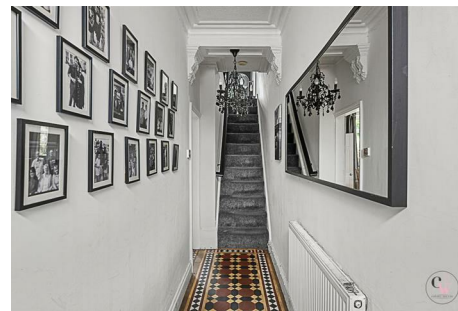


📞 01606 514 152    ✉ info@cwestateagents.co.uk  
📱 @CWestateAgent    📷 @CWestateAgents

# St. Georges Road

, Winsford, CW7 1DA

Offers in excess of £190,000



## Hallway

14'4" x 3'4" (4.371m x 1.027m)

## Lounge

13'5" x 9'11" (4.090m x 3.027m)

## Dining Room

11'10" x 10'7" (3.627m x 3.229m)

## Breakfast Kitchen

23'2" x 11'3" (7.062m x 3.445m)

## Inner Hallway

## Downstairs WC

3'11" x 3'7" (1.218m x 1.099m)

## Study/Snug/Playroom/Bedroom Three

11'5" x 7'3" (3.480m x 2.211m)

## Landing

12'6" x 5'0" (3.817m x 1.547m)

## Bedroom One

13'8" x 11'6" (4.183m x 3.506m)

## Bedroom Two

13'0" x 8'2" (3.983m x 2.512m)

## Family Bathroom

9'6" x 7'8" (2.917m x 2.349m)

## Externally

Little courtyard at the front and access via timber gate to the rear, large paved patio area with laid to lawn, very spacious garden.



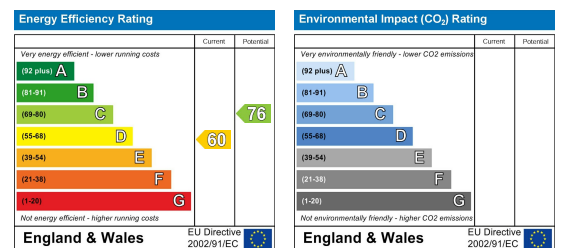
# Floor Plan



## Viewing

Please contact us on 01606 514 152 if you wish to arrange a viewing appointment for this property or require further information.

## Energy Efficiency Graph



These particulars, whilst believed to be accurate are set out as a general outline only for guidance and do not constitute any part of an offer or contract. Intending purchasers should not rely on them as statements of representation of fact, but must satisfy themselves by inspection or otherwise as to their accuracy. No person in this firm's employment has the authority to make or give any representation or warranty in respect of the property.

01606 514 152 
 info@cwestateagents.co.uk  
 @CWestateAgent 
 @CWestateAgents