

## Rotherfield Street, N1

£450,000

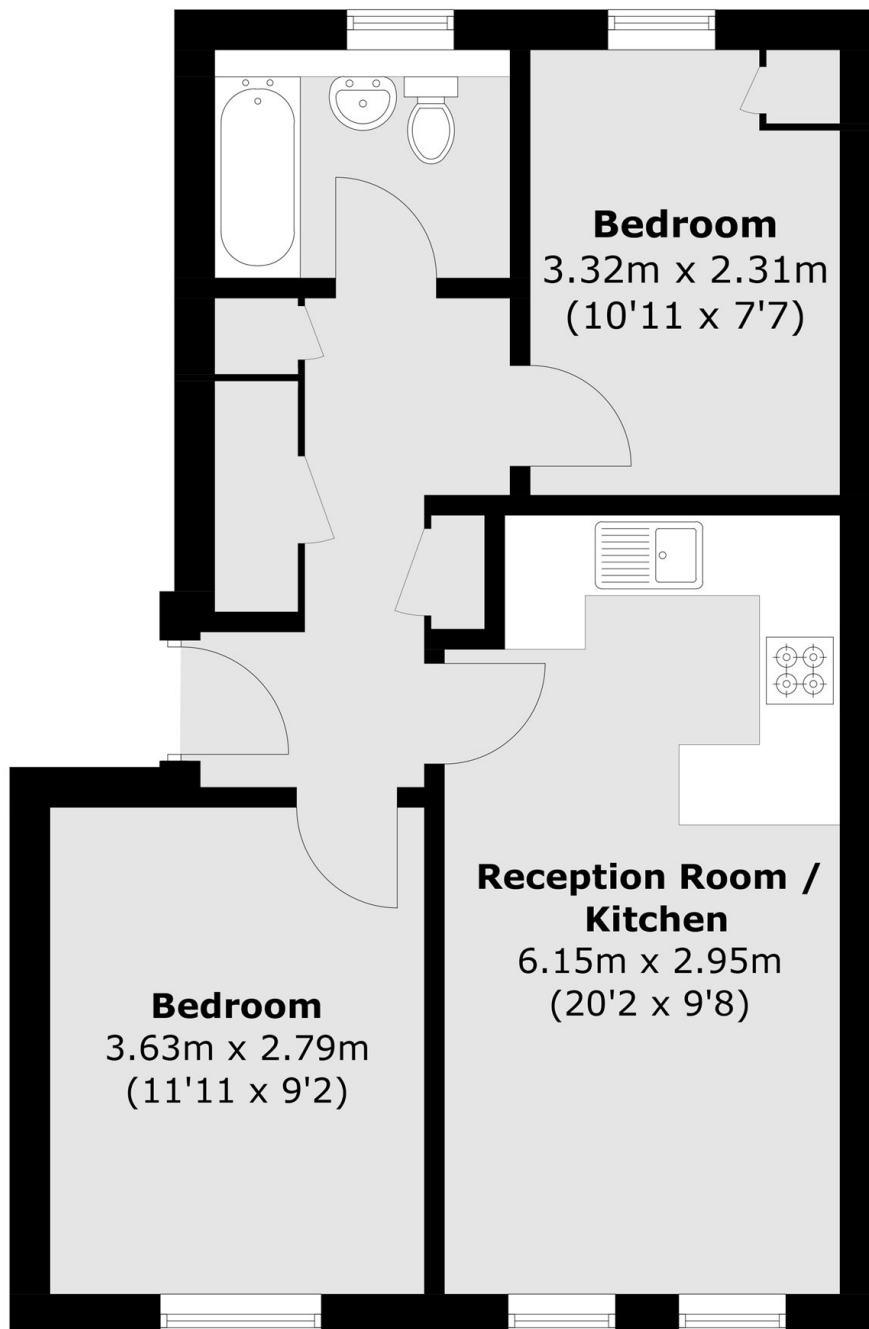
A well-presented two-bedroom flat on Rotherfield Street featuring an open-plan kitchen and reception area, two spacious double bedrooms, and attractive wood flooring throughout.

Rotherfield Street is ideal for commuters, offering excellent transport links via Essex Road station (National Rail/overground connections) and Angel station (Northern Line), with convenient access into the City. The property is also conveniently located close to the shops, cafés, restaurants and local amenities of Essex Road and Upper Street.

### Features

- Two Double Bedrooms
- Open-Plan Living
- Chain Free
- Fitted Storage
- Modern Kitchen
- Excellent Location

# Rotherfield Street, London, N1



Total area (approx.): 48.0 sq. m (516.7 sq. ft)