



Roman Way, Havant PO9 3PR

welcome to

Roman Way, Havant

Stylish four bed semi on a corner plot in Bedhampton, arranged over three floors with parking for three cars, EV charger, modern kitchen and landscaped garden with bi-fold doors. Well located for transport and local amenities.

Entrance Hall

Laminate flooring, radiator, stairs to first floor. Through to lounge, doors to kitchen and cloakroom.

Cloakroom

Double glazed window. Tiled floor, radiator, low level WC and wash hand basin.

Lounge

Double glazed window to front aspect and bi-fold doors leading to rear garden. Laminate flooring, radiator, feature fireplace with log burner, hearth and mantel over.

Kitchen/Dining Area

Island breakfast bar with sink unit. Range of wall and base cupboards and drawers with work surface over. Integrated appliances, including double oven and hob. Two radiators, spotlights, glass roof to dining area, space for table and chairs. Door to utility room.

Utility Room

Double glazed window to front aspect. Carpet flooring. Currently being used for storage.

First Floor Landing

Stairs leading to second floor. Doors to:

Bedroom One

Double glazed windows to front and side aspects. Built-in wardrobes, carpet flooring, radiator.

Bedroom Three

Double glazed window to front aspect. Carpet flooring, radiator, built-in wardrobes.

Bedroom Four

Double glazed window to front aspect. Laminate flooring, radiator, built-in wardrobes.

Bathroom

Double glazed window to side aspect. Panel enclosed bath with shower over, low level WC and pedestal wash hand basin. Laminate flooring, tiled walls.

Second Floor

Bedroom Two

Skylight, carpet flooring, radiator. Double glazed window to front aspect, spotlights. Door to en-suite.

En-Suite

Low level WC and wash hand basin.

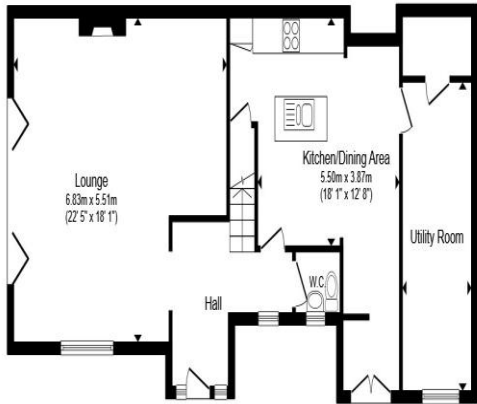
Outside

Front

Block paved driveway with space for three cars, EV charger. Personal door to rear garden.

Rear Garden

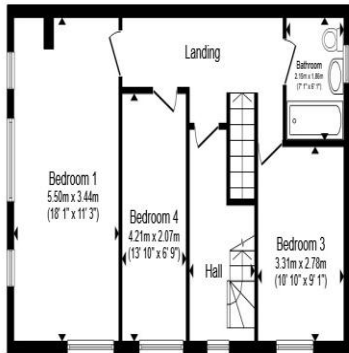
Laid to lawn with large patio area.



Ground Floor



Second Floor



First Floor

Total floor area 168.3 m² (1,811 sq.ft.) approx

This floor plan is for illustrative purposes only. It is not drawn to scale. Any measurements, floor areas (including any total floor area), openings and orientation are approximate. No details are guaranteed, they cannot be relied upon for any purpose and they do not form part of any agreement. No liability is taken for any error, omission or misstatement. A party must rely upon its own inspection(s). Powered by www.propertybox.io



welcome to
Roman Way,
Havant

- Corner Plot Semi Detached Home
- Bi-Fold Doors to Garden
- Four Double Bedrooms
- Three Storey Layout
- Parking for Three Cars

Tenure: Freehold EPC Rating: D
Council Tax Band: D

£500,000



view this property online fox-and-sons.co.uk/Property/WLV109758



Property Ref:
WLV109758 - 0002

1. MONEY LAUNDERING REGULATIONS Intending purchasers will be asked to produce identification documentation at a later stage and we would ask for your co-operation in order that there is no delay in agreeing the sale. 2. These particulars do not constitute part or all of an offer or contract. 3. The measurements indicated are supplied for guidance only and as such must be considered incorrect. Potential buyers are advised to recheck measurements before committing to any expense. 4. We have not tested any apparatus, equipment, fixtures or services and it is in the buyers interest to check the working condition of any appliances. 5. Where an EPC, or a Home Report (Scotland only) is held for this property, it is available for inspection at the branch by appointment. If you require a printed version of a Home Report, you will need to pay a reasonable production charge reflecting printing and other costs. 6. We are not able to offer an opinion either written or verbal on the content of these reports and this must be obtained from your legal representative. 7. Whilst we take care in preparing these reports, a buyer should ensure that his/her legal representative confirms as soon as possible all matters relating to title including the extent and boundaries of the property and other important matters before exchange of contracts.

Fox & Sons is a trading name of Sequence (UK) Limited which is registered in England and Wales under company number 4268443, Registered Office is Cumbria House, 16-20 Hockliffe Street, Leighton Buzzard, Bedfordshire, LU7 1GN. VAT Registration Number is 500 2481 05.



023 9226 2447



Waterlooville@fox-and-sons.co.uk



81B London Road, WATERLOOVILLE,
Hampshire, PO7 7ES



fox-and-sons.co.uk