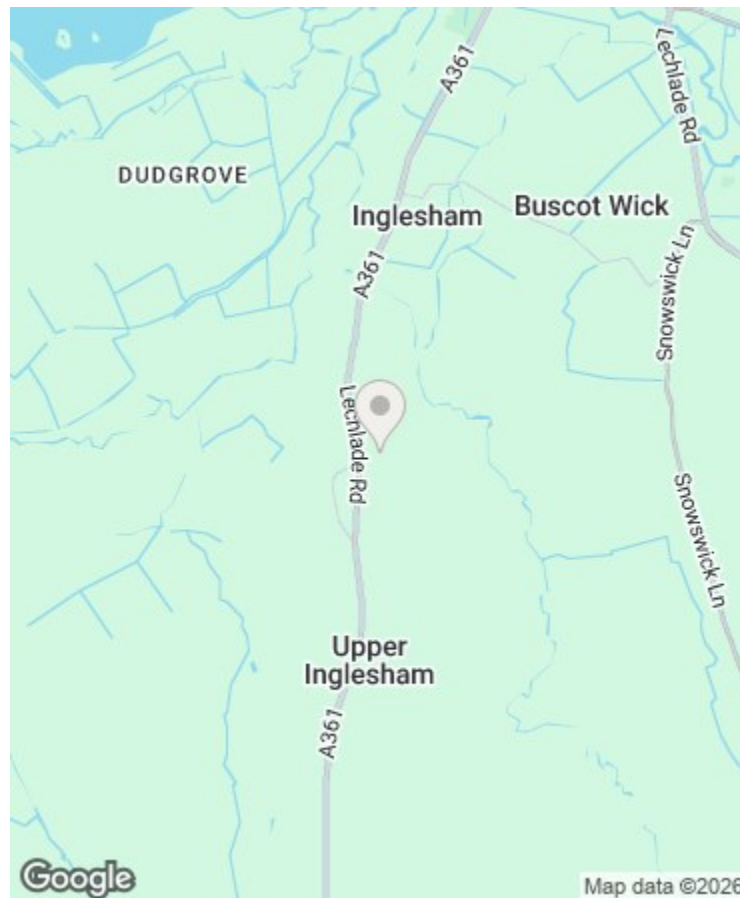




THE COTSWOLD LETTING AGENCY

BETTER BY FAR



Directions

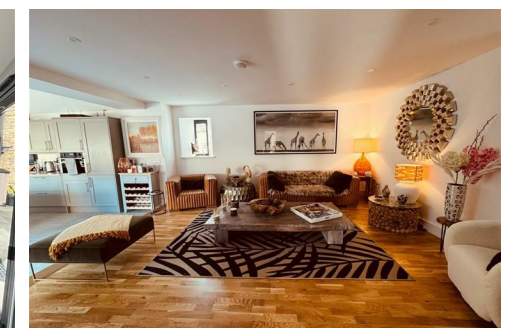
Viewings

Viewings by arrangement only. Call 01993 684572 to make an appointment.

EPC Rating

B

Energy Efficiency Rating		Current	Potential
Very energy efficient - lower running costs			
(92 plus) A			
(81-91) B		85	
(69-80) C			
(55-68) D			
(39-54) E			
(21-38) F			
(1-20) G			
Not energy efficient - higher running costs			
England & Wales		EU Directive 2002/91/EC	



Byre House Lynt Farm Lane, Inglesham, SN6 7QZ

£5,250 Per Month

- 4 Bedrooms
- Open-plan living area
- Beautifully converted barn
- Peaceful village location
- Short term let
- Fully furnished

Byre House Lynt Farm Lane, Inglesham SN6 7QZ

Inglesham is a small, peaceful village in north-east Wiltshire, near the borders with Gloucestershire and Oxfordshire. Just a mile south-west of Lechlade-on-Thames and close to the A361, it offers a quiet escape beside the River Thames.

The main attraction is the 13th-century Church of St John the Baptist, known for its medieval wall paintings, Saxon carvings, and connection to designer William Morris, who helped preserve it. The church's simple, untouched interior makes it a fascinating historic site to visit. Inglesham is also a lovely spot for walking. The Thames Path passes nearby, offering scenic riverside trails and meadows, while the nearby Thames & Severn Canal and Inglesham Round House add further historic interest. Just up the road, Lechlade provides cafés, pubs, and boating on the Thames, and the wider Cotswolds are easily reached for day trips.

Inglesham is best reached by car, but there are good rail connections nearby. The closest major station is Swindon, about 9 miles away, with direct trains to London Paddington (around 55 minutes) and connections to Oxford (about 35 minutes via Didcot Parkway). Alternatively, Kemble station near Cirencester (about 30 minutes by car) also offers mainline services to London.

Quiet, rural, and full of character, Inglesham makes a perfect base for peaceful walks, pub lunches by the river, and exploring the nearby Cotswolds, Oxfordshire villages, and historic Thames landmarks.



Council Tax Band:



Byre House is an exceptional barn conversion, thoughtfully designed and beautifully finished throughout. Located just a short distance from the charming market town of Lechlade, this impressive home combines spacious, contemporary interiors with traditional character features.

Upon entering, you are welcomed by a spacious entrance hallway with stairs leading to the first floor. Off the hallway, you'll find a ground-floor bedroom with its own bathroom, as well as a separate cloakroom. A door from the hallway opens into the stunning open-plan living area, where the home's charm truly shines. The cosy living room features oak flooring and a comfortable seating area centred around the TV, while exposed wooden beams across the ceiling add warmth and character.

The modern kitchen is both elegant and functional, boasting a large island with breakfast bar, ample storage, stylish cabinetry, and a double fridge. The adjoining dining area features a large dining table and sofa, creating the perfect space for hosting family and friends. A practical 4th bedroom or study is located just off the dining room, and benefits from its own en-suite. Expansive French doors span the front wall of the barn, flooding the room with natural light and opening out to the garden, seamlessly blending indoor and outdoor living.

Upstairs, the property offers two beautifully presented bedrooms. The master suite includes a walk-in wardrobe and a luxurious en-suite bathroom, creating a peaceful retreat. The second bedroom also boasts its own en-suite bathroom.

Outside, the landscaped garden provides the ideal setting for both entertaining and relaxation, featuring a fire pit with seating area and a dining space, perfect for enjoying the outdoors all year round.

All bills included!