



Willow Close, Guide Price £260,000 to £265,000

- 3 Bedroom Semi-Detached
- Modern Kitchen and Bathroom
- Front and Rear Garden
- Long Driveway with Single Garage
- Beautifully Presented
- Ideal Location with Immediate Access to Spytt Retail Park
- Excellent Transport Links
- EPC Rating: D



 3  1  1

Pinkmove

01633 746088
team@pinkmove.co.uk



About the property

Located in the desirable area of Liserry, this well-presented semi-detached home is set on a quiet street just moments from the vibrant Spyty Retail Park. With a wealth of shops, cafés, and leisure facilities nearby, and excellent transport links via the A48 and M4, this property offers both convenience and comfort in equal measure.

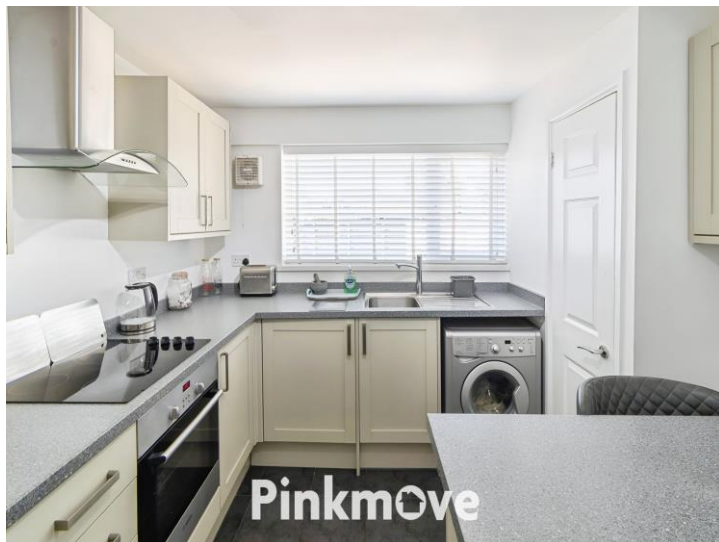
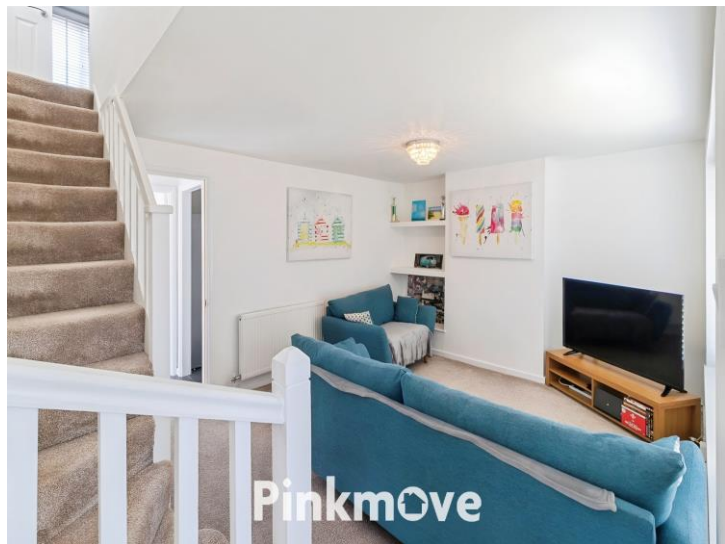
Upon entering through the front door, you're welcomed directly into a bright and airy living room that sets the tone for the rest of the home. The space flows effortlessly through to the rear, where you'll find a modern kitchen complete with a central breakfast bar—perfect for casual dining or morning coffee. A contemporary bathroom is also located on the ground floor, thoughtfully designed for both style and functionality.

Upstairs, the property offers three sizeable bedrooms, each filled with natural light and offering ample space for rest or work-from-home setups.

Externally, the home continues to impress. A long driveway provides access to a single garage and leads to an enclosed rear garden—ideal for outdoor entertaining or family play. A neat front garden adds to the property's curb appeal, completing the picture of a well-rounded family home.

This is a fantastic opportunity to secure a spacious and stylish property in a prime Newport location, within walking distance of Liserry Primary School and with strong potential for future growth.!





Accommodation

Living Room

11' x 16' (3.35m x 4.88m)

Kitchen

13' 9" x 9' 10" (4.19m x 3.00m)

Bathroom

10' x 6' (3.05m x 1.83m)

Bedroom 1

10' 10" x 12' 11" (3.30m x 3.94m)

Bedroom 2

12' x 8' (3.66m x 2.44m)

Bedroom 3

9' x 7' (2.74m x 2.13m)

Garage

17' x 10' (5.18m x 3.05m)

01633 746088

team@pinkmove.co.uk

Pinkmove

Floorplan



Important Information

Note while we endeavour to make our sales details accurate and reliable, if there is any point which is of particular interest to you, please contact the office and we will be pleased to confirm the position for you. We have not personally tested any apparatus, equipment, fixtures, fittings or services and cannot verify they are in working order or fit for their purposes. Nothing in these particulars is intended to indicate that carpets or curtains, furnishings or fittings, electrical goods (whether wired or not). Gas fires or light fittings or any other fixtures not expressly included form part of the property offered for sale. This computer generated Floorplan, if applicable, is intended as a general guide to the layout and design of the property. It is not to scale and should not be relied upon for dimensions. Tenure: We cannot confirm the tenure of the property as we have not had access to the legal documents. The buyer is advised to obtain verification from their solicitor or surveyor.

Peter Alan Limited is registered in England and Wales under company number 2073153, Registered Office is Cumbria House, 16-20 Hockliffe Street, Leighton Buzzard, Bedfordshire, LU7 1GN. VAT Registration Number is 500 2481 05. For activities relating to regulated mortgages and non-investment insurance contracts, Peter Alan Limited is an appointed representative of Connells Limited which is authorised and regulated by the Financial Conduct Authority. Connells Limited's Financial Services Register number is 302221. Most buy-to-let

