



BECKMEAD AVENUE, SW16

£1,650,000

- Semi-detached family home
- Five double bedrooms
- Off street parking
- Large rear garden
- Nearby Tooting Bec Common
- Energy rating: D





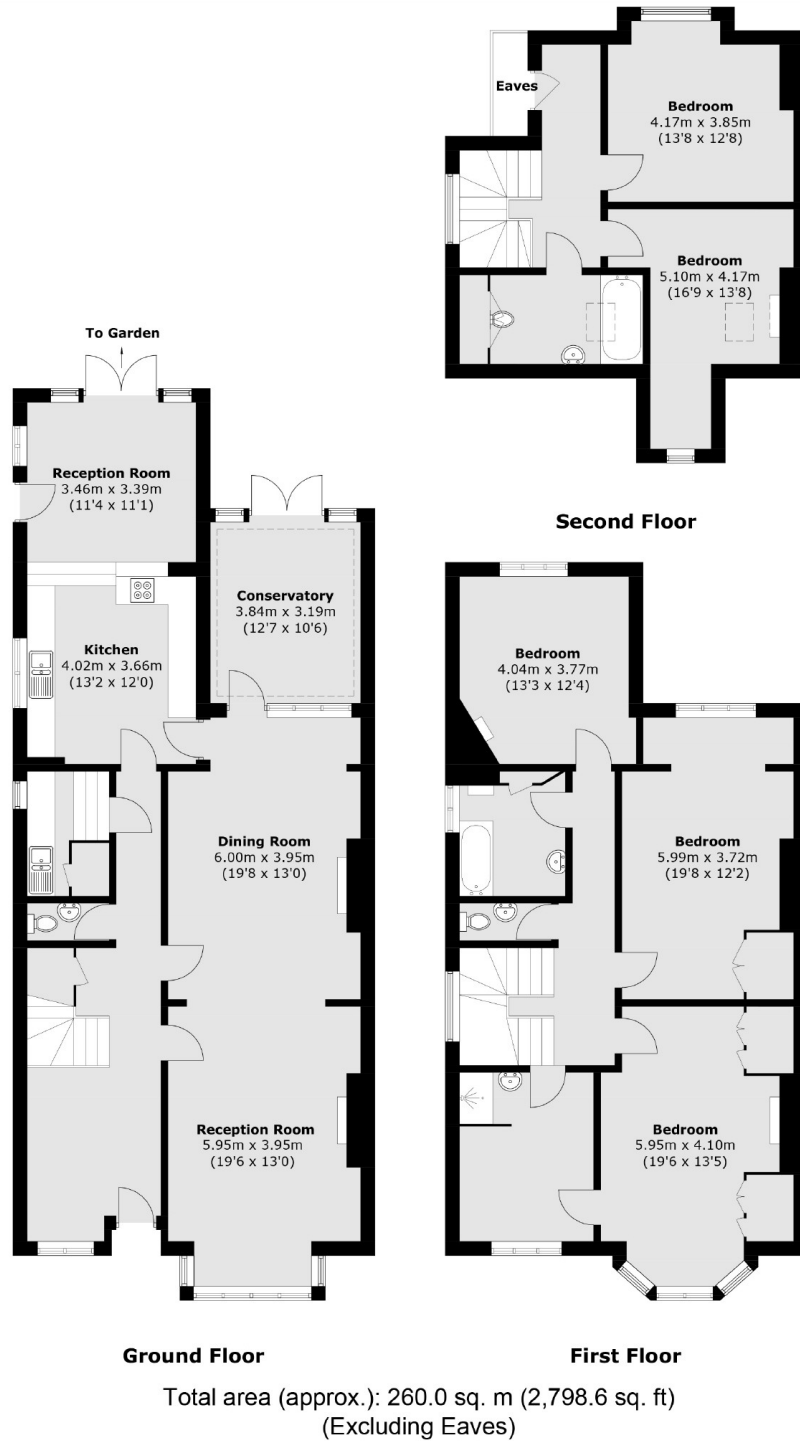
ABOUT THE HOME

A large five bedroom semi-detached family home with a large garden, private driveway and potential to extend, located on a popular tree-lined road just off Tooting Bec Common.

Becmead Avenue is one of Streatham's most sought after roads, tree lined with large gardens and close to many local amenities and the green open spaces of Tooting Bec Common. There is a good selection of outstanding state and private schools all within walking distance. Commuters have easy access to an abundance of transport links including numerous bus routes to Balham and Brixton and mainline stations with connections into London and the City.







JACKSONS STREATHAM

1-3 De Montfort Parade,
Streatham High Road,
Sales: 020 8487 3179
Lettings: 020 8487 3180

Energy Rating: D We aim to make our particulars both accurate and reliable. However they are not guaranteed; nor do they form part of an offer or contract. If you require clarification on any points then please contact us, especially if you're traveling some distance to view. Please note that appliances and heating systems have not been tested and therefore no warranties can be given as to their good working order.