



Brent
Cross
Town

The Ashbee

LONDON NW2





A new way to live.

Welcome to The Ashbee at Brent Cross Town. A home surrounded by over 50 acres of landscaped parks and playing fields, and a short walk from a buzzing destination high street, alive with shops, bars and restaurants - where everything you need is within a fifteen-minute walk or cycle ride away - all just a 12 minute train journey from central London.

A new park town for future London, Brent Cross Town is part of a wider masterplan that sets a new standard for large-scale urban regeneration whilst making a positive contribution to the world we share.

Offering a new way of living that inspires healthy, sustainable lifestyles tailored to residents' needs, it's a place where everyone who calls it home will play their part in defining a bold vision for the future. A net zero carbon town by 2030, Brent Cross Town is built on a simple wish that we all share: to do our very best to enjoy every moment of our lives.



Watch our BXT film here



Computer generated imagery is indicative only.



Elegant **APARTMENTS** overlooking **CLAREMONT PARK** blend city living with a host of green, open spaces to enjoy.



38



32

Contents

1

BRENT CROSS TOWN

A new park town for future London.
06 – 13

2

CONNECTIVITY

Great transport links into and out of central London.
14 – 17

3

THE ASHBEE

Designed by globally acclaimed architects Squire and Partners, with interiors by Woods Bagot inspired by the Arts & Crafts movement.
18 – 21

4

THE CLAREMONT PARK CLUB

Discover the space to enjoy an inspiring lifestyle without ever leaving home.
22 – 37

5

PARKSIDE LIVING

Elegant and expansive apartments with park and garden views, light-filled interiors, natural finishes and bold colours.
38 – 51

6

APARTMENT FINDER

52 – 53

7

FLOOR PLATES

54 – 69

8

SPECIFICATION

70 – 71

9

VISIT/ CONTACT

Come down to the Visitor Pavilion to meet the team and find out more.
72

BRENT CROSS TOWN will set a new benchmark for **QUALITY of PLACE** and **NEW HOMES** in London.

36



Brent Cross West Station, Thameslink
(Completion expected Autumn 2023)

M1 Motorway

North Circular A406 Road

Central Neighbourhood Square

Brent Cross Shopping Centre

THE DELAMARRE

Brent Cross Tube Station Northern line
(10 mins walk)

Office District

Claremont Park

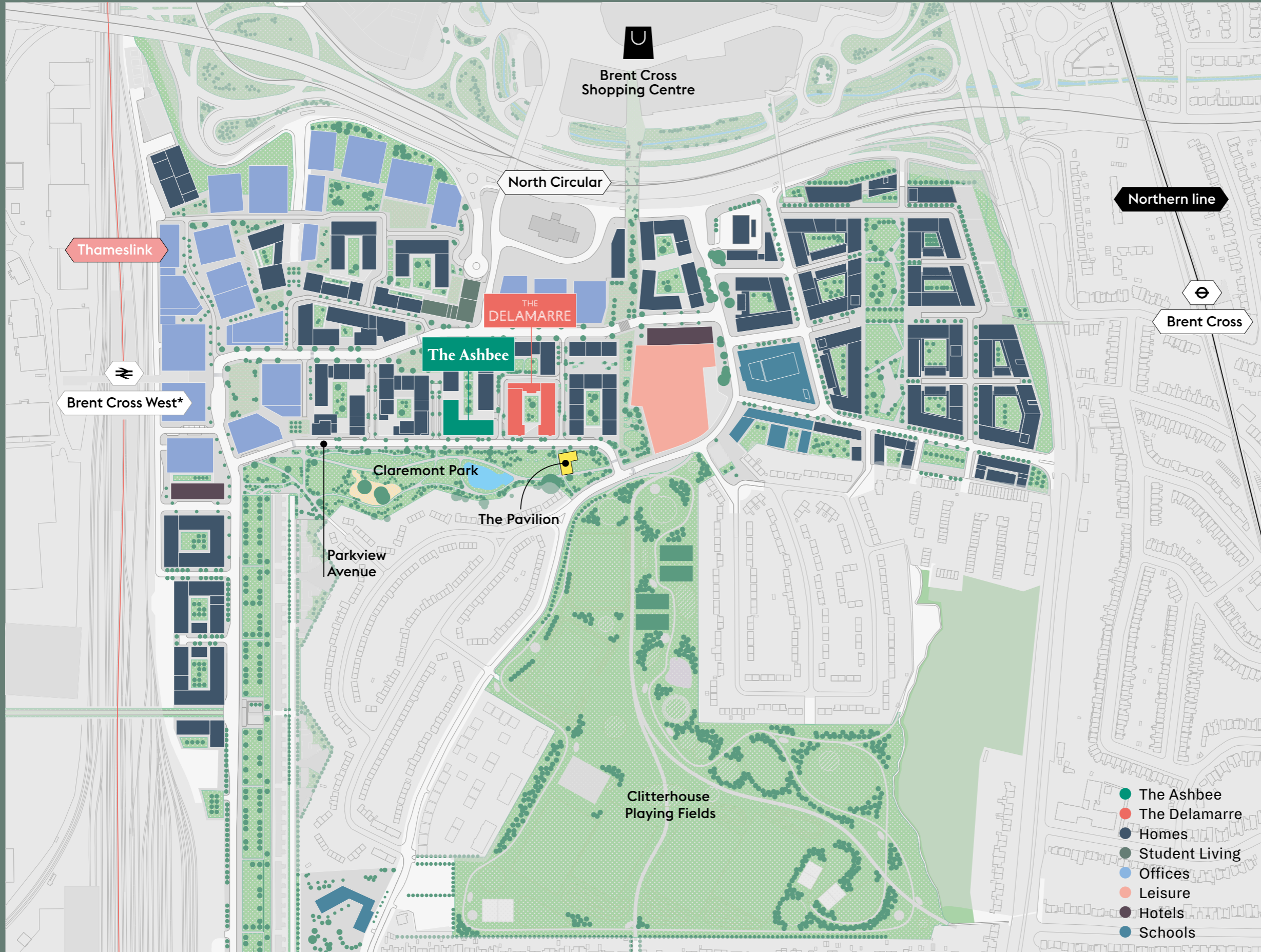
The High Street

The Ashbee

Brent Cross Town Visitor Pavilion

Clitterhouse Playing Fields

Welcome to **BRENT CROSS TOWN**, a place that **INSPIRES** us into **FUTURE WAYS** of **LIVING** and **WORKING**. Related Argent, in partnership with Barnet Council, is on-site delivering a new North London neighbourhood spanning **180 ACRES**, with **50 acres** of green parks and playing fields.



A plan for the future.

Brent Cross Town will be a new PARK TOWN FOR FUTURE LONDON. It will establish A NEW STANDARD FOR LARGE-SCALE URBAN REGENERATION while making a positive contribution to the world we share.



SPORT & PLAY

We will create **THE PLACE** in LONDON to participate in **SPORT** and **PLAY** with **50 ACRES** of **PARKS** and **PLAYING FIELDS** to **UNITE** people and **TRANSFORM** lives

2

FLOURISHING COMMUNITY

We will make a North London Town **WHERE ALL CAN FLOURISH**



We're making **FOUR PLEDGES** to deliver on

Our vision

For this **NORTH LONDON NEIGHBOURHOOD**



3

NET ZERO CARBON TOWN

We will build a **NET ZERO CARBON** town — addressing the **GLOBAL CHALLENGE** of the climate crisis



STRENGTHENING CONNECTIONS

We will strengthen **CONNECTIONS** with **GREAT TRANSPORT** into and out of **CENTRAL LONDON**, connecting businesses, customers, friends and family

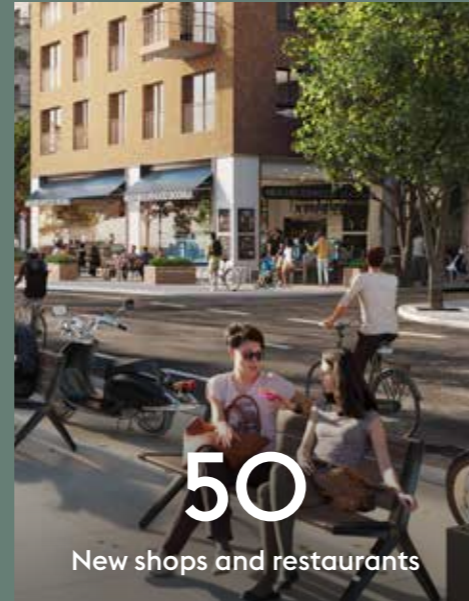
4



180
Acres



6,700
New homes



50
New shops and restaurants



25,000
People working here

People enjoy a better
QUALITY OF LIFE
and greater sense of
COMMUNITY when
everything they need
is within a **FIFTEEN-**
MINUTE walk or cycle.



£8bn
Gross Development Value



8
New public squares



50
Acres of green space



ZERO
Net Zero Carbon Town By 2030

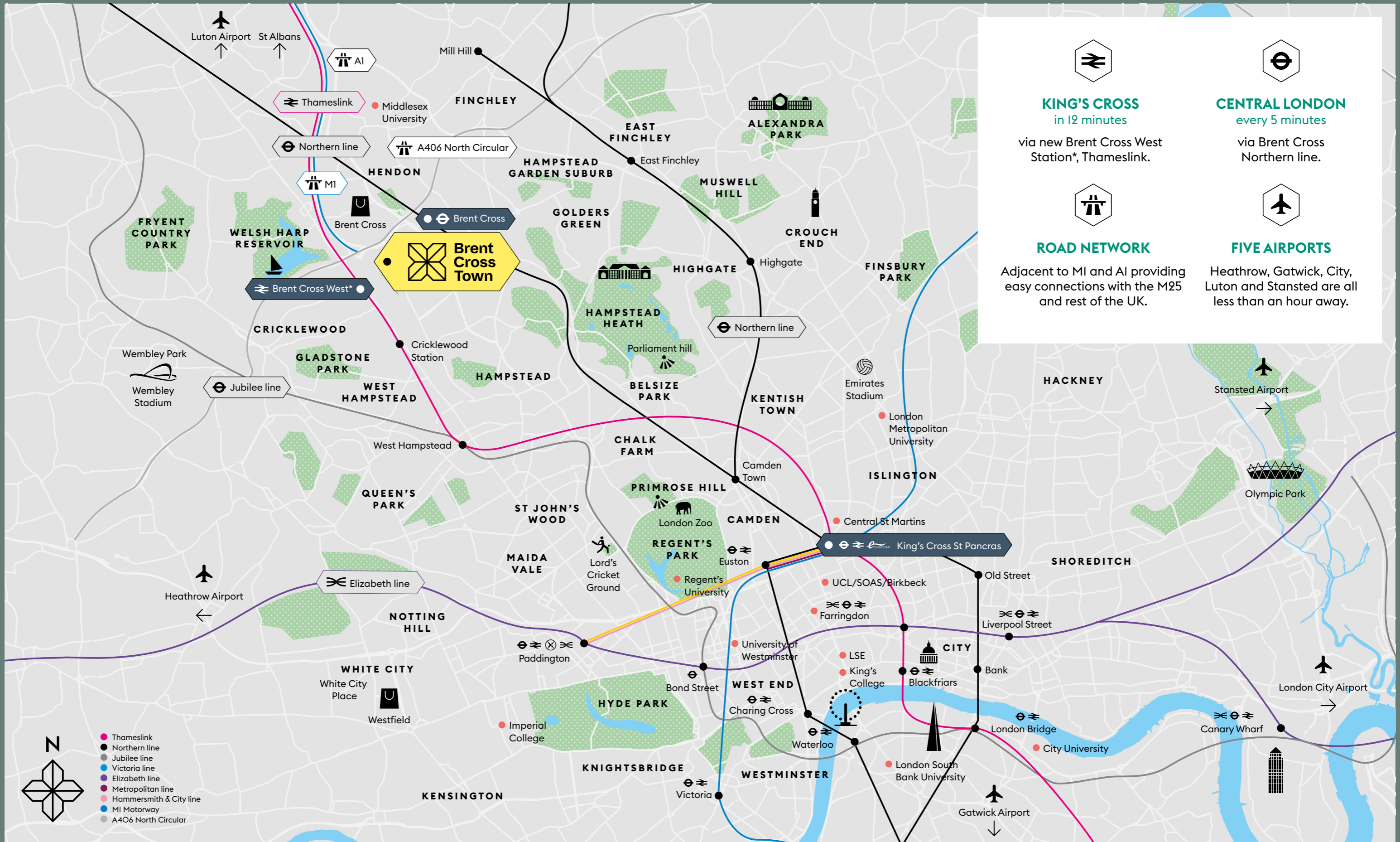


A new **HIGH STREET**
combining popular
national brands
with independent
SHOPS, CAFÉS and
RESTAURANTS.

Our exemplar neighbourhood town will provide residents and workers with easy access to home, work, childcare, health practices, shops, restaurants, schools and parks.

The High Street and Central Neighbourhood Square will be the destination for residents, workers and visitors, to shop, eat and socialise, providing a variety of everyday essentials, popular brands, independent and artisan shops, selling homemade and home-grown produce.







- CYCLE**
- Brent Cross Shopping Centre 6 mins
- Welsh Harp Reservoir 10 mins
- Kenwood House 23 mins
- Primrose Hill Village 24 mins
- Hampstead Heath 25 mins
- RAIL AND UNDERGROUND**
- Hampstead 8 mins
- Chalk Farm 10 mins
- Camden Town 11 mins
- King's Cross 12 mins
- Euston 15 mins
- Farringdon 15 mins
- Old Street 21 mins
- Victoria 21 mins
- Charing Cross 22 mins
- London Bridge 28 mins
- Thameslink (Pink dot)
- Northern Line (Black dot)
- Jubilee Line (Grey dot)
- M1 Motorway (Blue dot)
- A406 North Circular (White dot)
- ROAD**
- Luton 30 mins
- Heathrow 45 mins

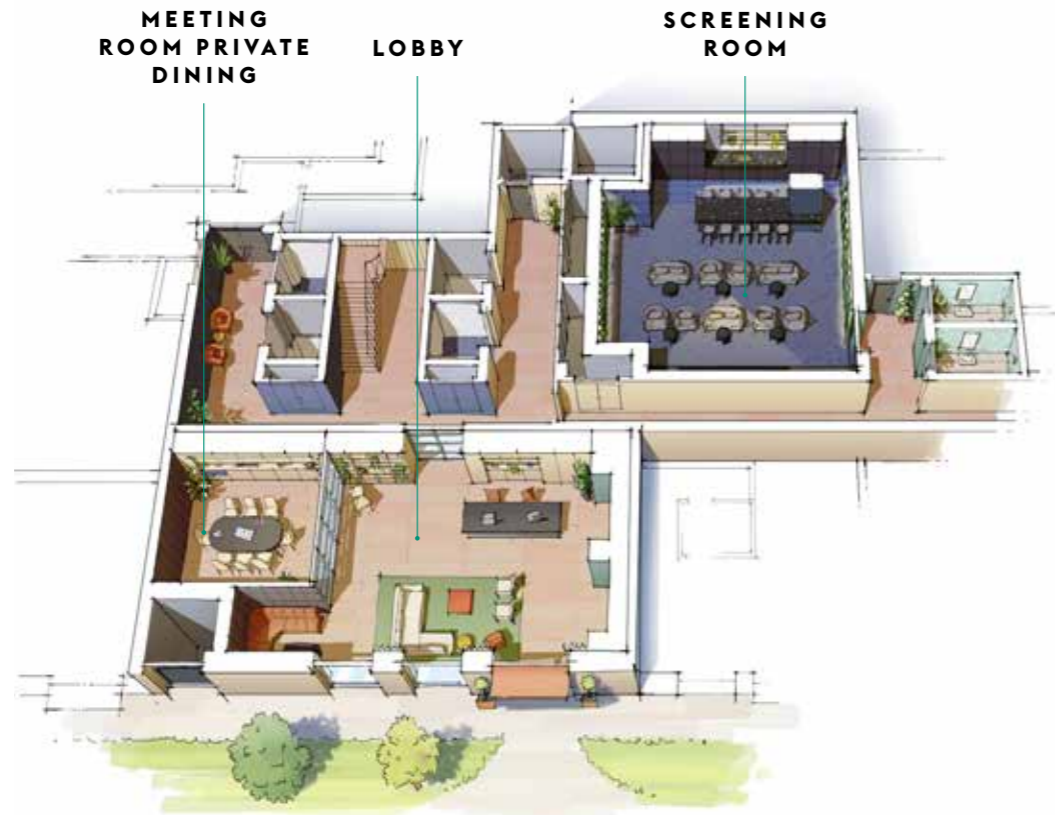
Twilight view of the new
Brent Cross Town PAVILION
and CLAREMONT PARK.





ELEGANT and **EXPANSIVE** apartments with **PARK** and **GARDEN** views, light-filled interiors, **NATURAL** finishes and bold colours.

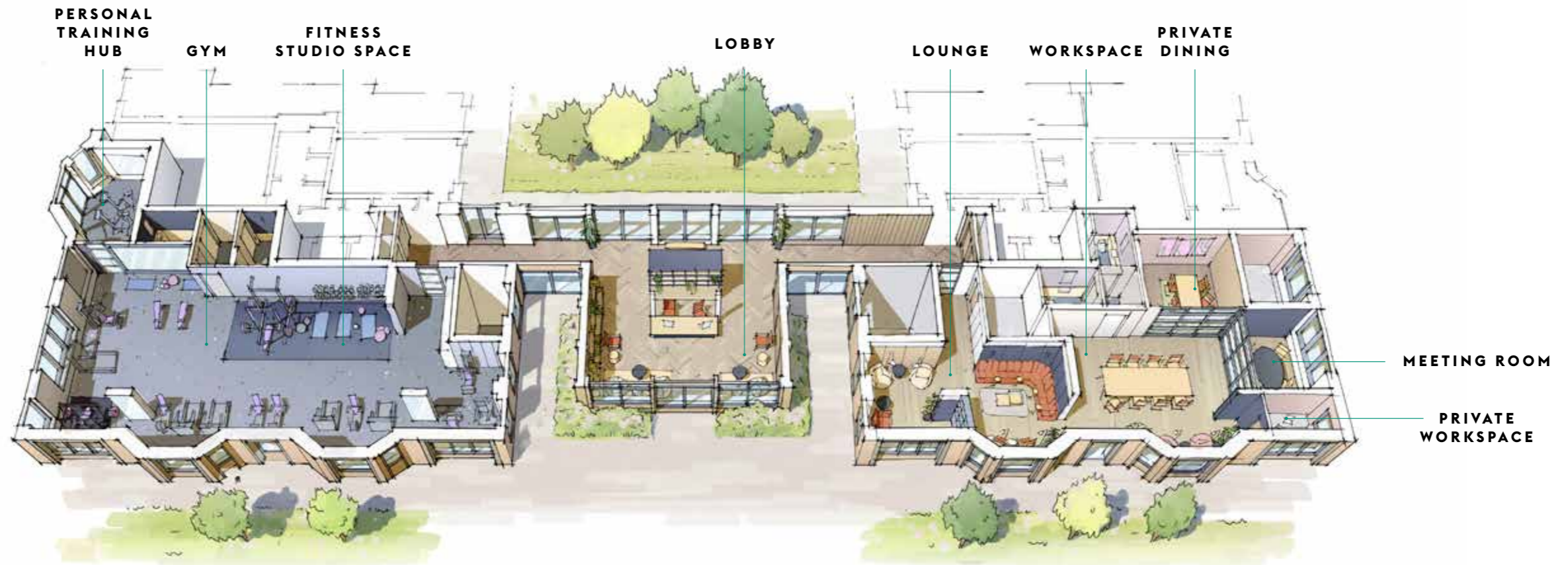
The Ashbee



The Claremont Park Club.

EVERY RESIDENT will enjoy being part of the CLAREMONT PARK CLUB, located on the ground floor of both The Ashbee and The Delamarre. Discover the space to enjoy an INSPIRING LIFESTYLE without ever leaving home.

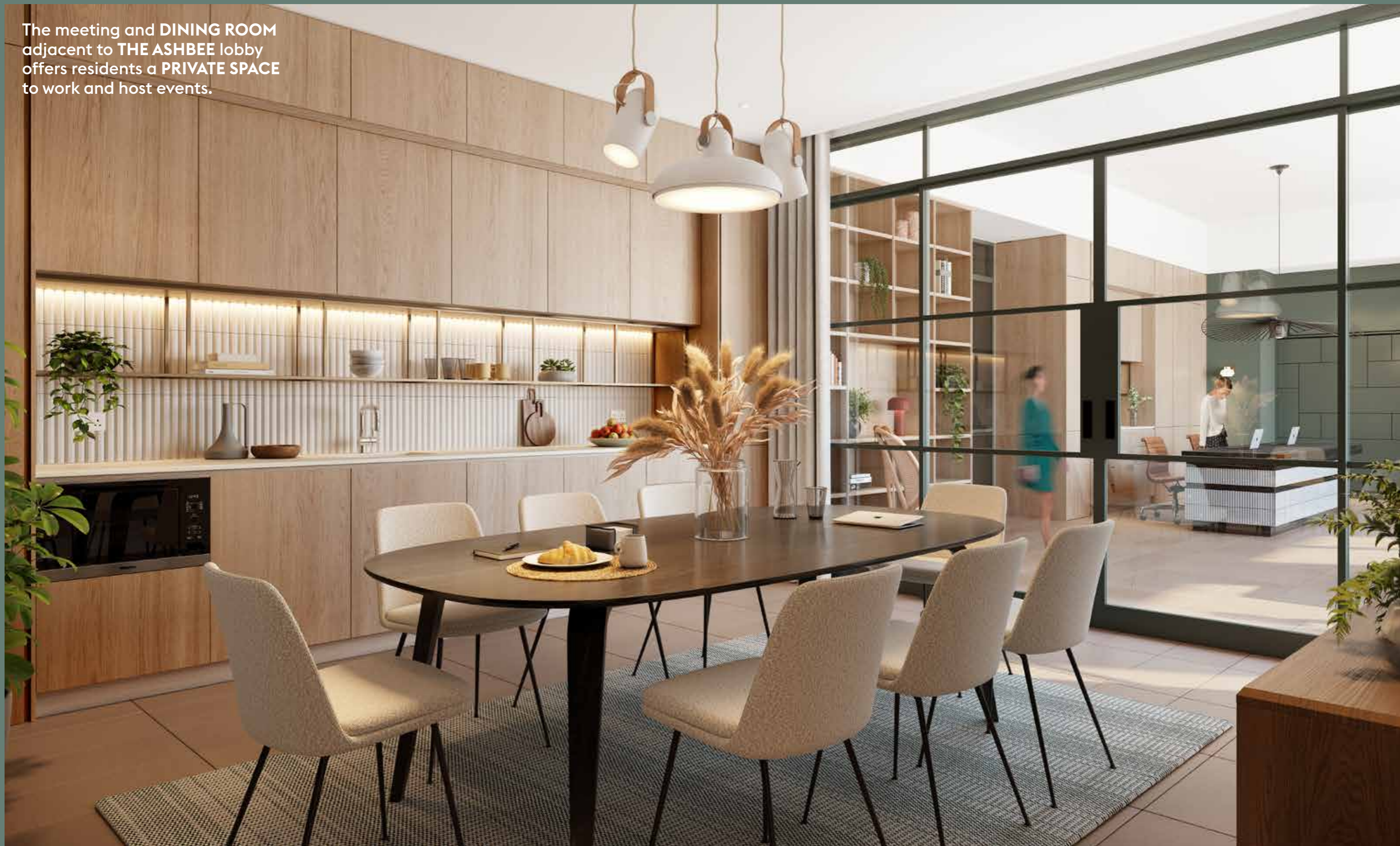
The Delamarre





A PRIVATE MEETING and SCREENING ROOM are both accessed via the stylish **PARKSIDE LOBBY** at The Ashbee.

The meeting and DINING ROOM adjacent to THE ASHBEE lobby offers residents a PRIVATE SPACE to work and host events.





Host a **MOVIE NIGHT** or party for friends in the sumptuous private **SCREENING ROOM** and **BAR**.

The main LOBBY in The Delamarre offers the **BRIGHTEST OF WELCOMES**. With floor-to-ceiling glazing and **EXPANSIVE VIEWS** across the landscaped **PODIUM GARDEN** and **CLAREMONT PARK**.



The **SUNLIT PARKSIDE LOUNGE** welcomes the **OUTSIDE IN** with its rich natural tones and the **FLOWING LINES** of the contemporary furnishings.



WORKING and dining at home has never been more **STYLISH**, in the **ADJOINING** space with its **REFECTORY** style seating and adjacent **PRIVATE DINING ROOM** and **KITCHEN**.





RAISE YOUR PULSE whilst enjoying the view in the 1,790 SQ FT parkside gym, that defines the very latest in personal fitness.

Parkside living.

Interiors inspired by the **ARTS & CRAFTS MOVEMENT**, The Ashbee has been designed by **GLOBALLY ACCLAIMED** architects **SQUIRE AND PARTNERS**.







**FLOOR-TO-CEILING
WINDOWS** bring the
OUTSIDE IN, bringing
you closer to **NATURE**.

Stylish, **LIGHT-FILLED** open plan **LIVING SPACES** feature finishes in rich contrasting textures and colours.



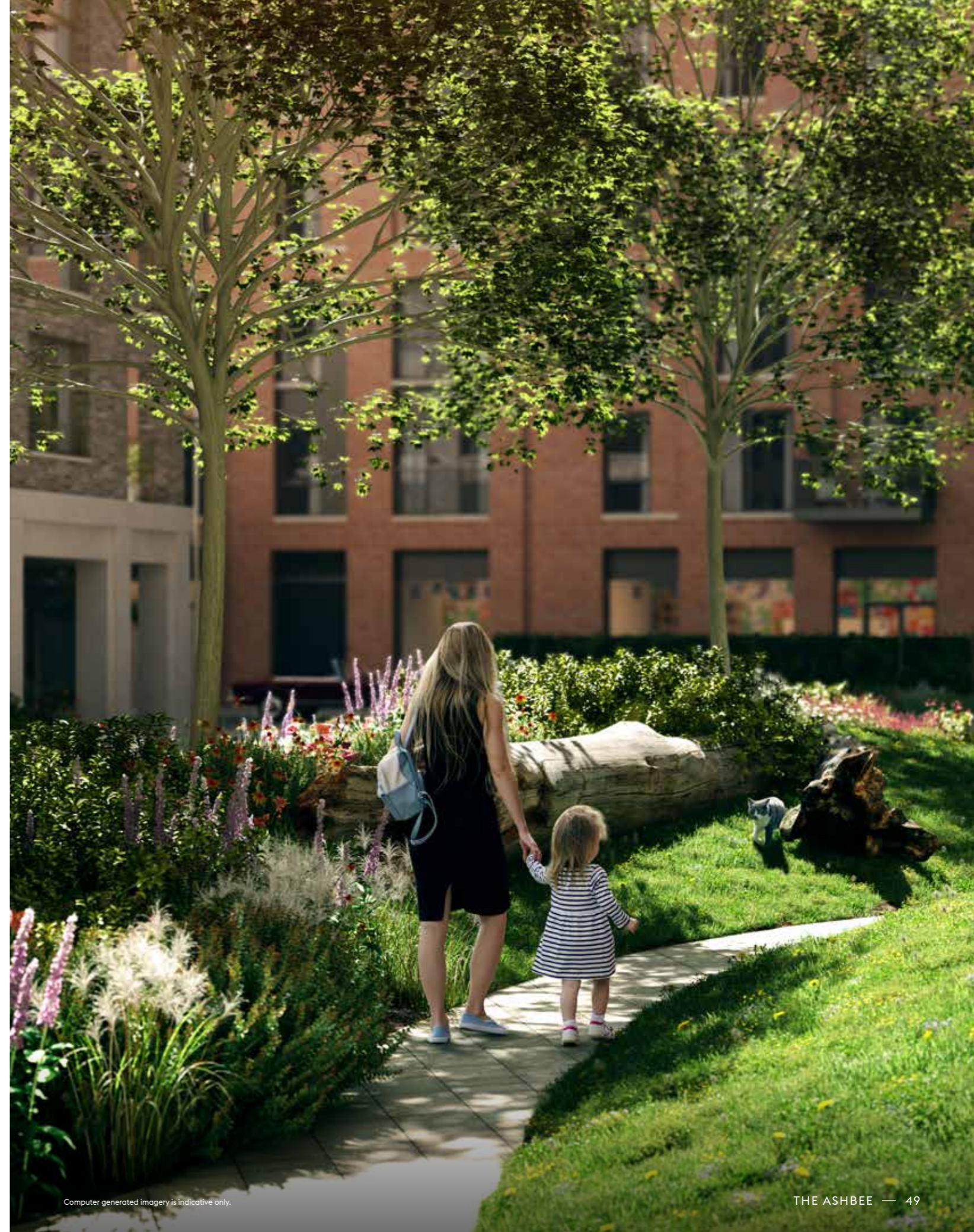
High-spec kitchens with integrated appliances and boiling water taps for everyday convenience.



SPACIOUS BATHROOMS
and **EN-SUITES** feature
tiling and mirrored
storage.



RESIDENTS of The Ashbee look over a **TRANQUIL LANDSCAPED** internal garden designed by the renowned Andy Sturgeon Design, and (pictured right) **POCKET PARK** just moments away, provides another **GREEN SPACE** to enjoy.



Step out into the **PARK** - a space to explore, meet friends, exercise or **SIMPLY ENJOY** a relaxing stroll.

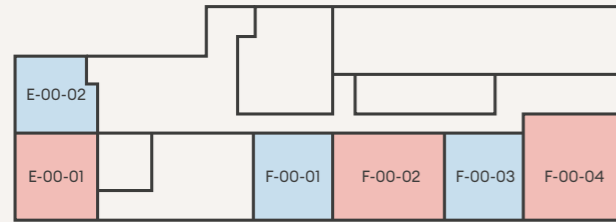


Apartment finder.

-  Studio
-  1 Bedroom
-  2 bed apartment
-  3 bed apartment

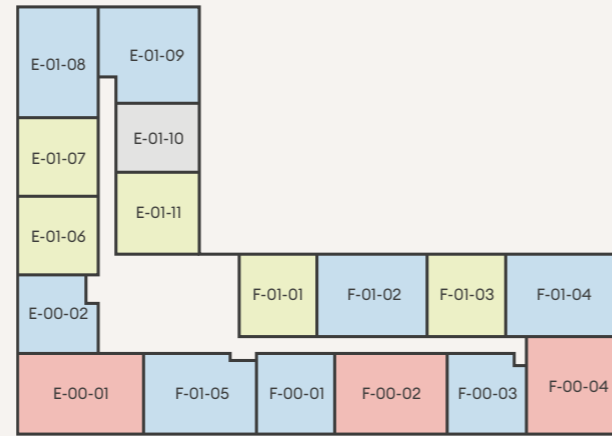


GROUND



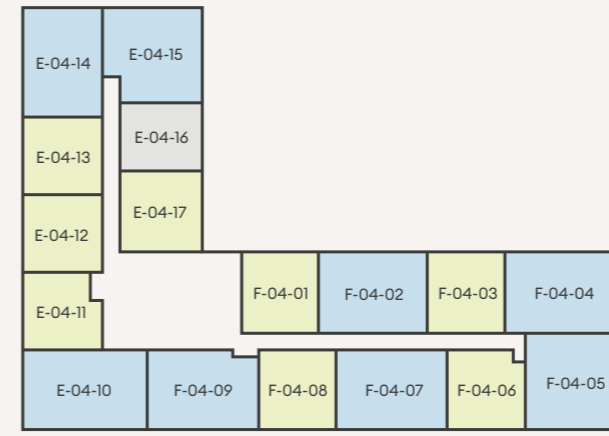
CLAREMONT PARK

FIRST



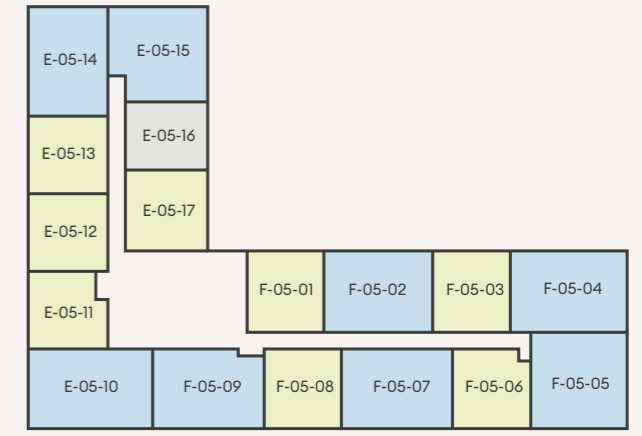
CLAREMONT PARK

FOURTH



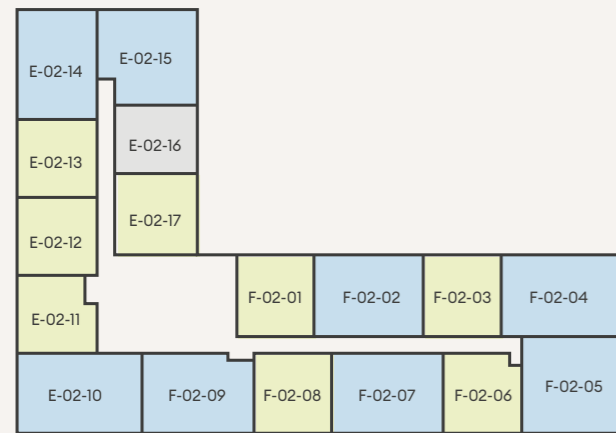
CLAREMONT PARK

FIFTH



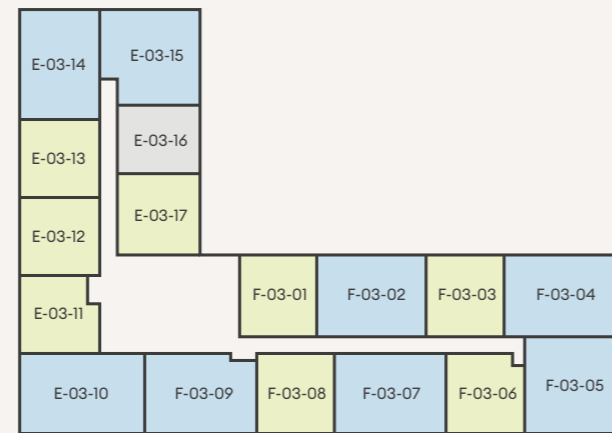
CLAREMONT PARK

SECOND



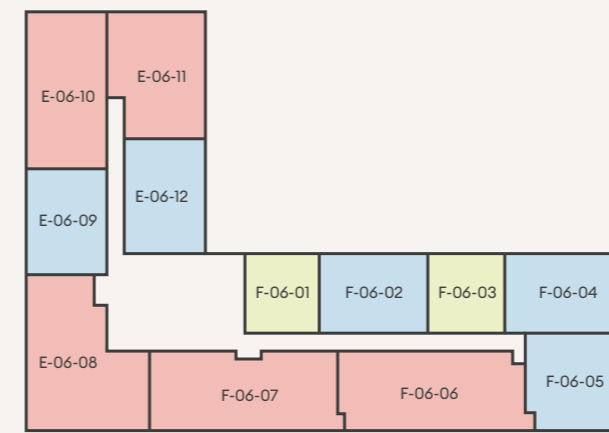
CLAREMONT PARK

THIRD



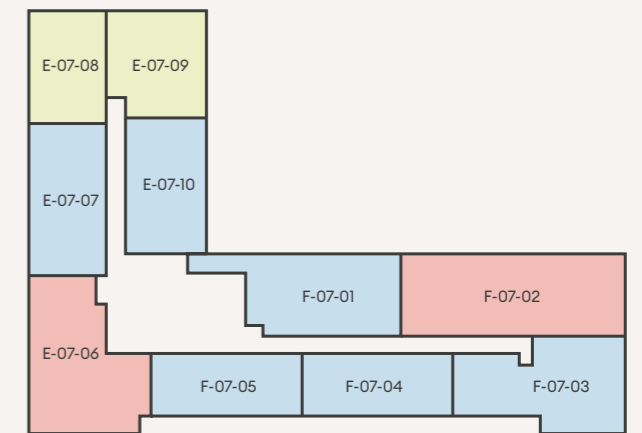
CLAREMONT PARK

SIXTH



CLAREMONT PARK

SEVENTH



CLAREMONT PARK



2 BEDROOM DUPLEX			3 BEDROOM DUPLEX		
NSA	100.5 m ²	1,081 sq ft	NSA	140.4 m ²	1,511 sq ft
Living/Kitchen 1	5.58 x 6.53 m	18ft 4" x 21ft 5"	Living/Kitchen 1	6.66 x 6.71 m	21ft 10" x 22ft 0"
Living/Kitchen 2	5.58 x 3.05 m	18ft 4" x 10ft 0"	Living/Kitchen 2	6.66 x 3.00 m	21ft 10" x 9ft 10"

2 BEDROOM DUPLEX			3 BEDROOM DUPLEX		
NSA	106.5 m ²	1,147 sq ft	NSA	154.4 m ²	1,663 sq ft
Living/Kitchen 1	6.75 x 6.69 m	22ft 0" x 12ft 6"	Living/Kitchen 1	6.61 x 3.80 m	21ft 8" x 12ft 6"
Living/Kitchen 2	6.14 x 6.69 m	20ft 2" x 21ft 11"	Living/Kitchen 2	2.89 x 6.69 m	9ft 6" x 21ft 11"

2 BEDROOM DUPLEX			3 BEDROOM DUPLEX		
NSA	106.7 m ²	1,148 sq ft	NSA	161.6 m ²	1,739 sq ft
Living/Kitchen 1	8.10 x 5.47 m	26ft 7" x 17ft 11"	Living/Kitchen 1	6.71 x 3.80 m	22ft 0" x 12ft 6"
Living/Kitchen 2	4.38 x 9.12 m	14ft 4" x 29ft 11"	Living/Kitchen 2	3.00 x 7.30 m	9ft 10" x 23ft 11"



2 bed apartment
3 bed apartment



Floorplans and listed apartment areas are for approximate measurements only. Dimensions are not intended to be used for carpet sizes, appliance sizes or items of furniture. Furniture shown is not included.

1



STUDIO	E-01-10	
NSA	46.1 m ²	496 sq ft
Courtyard	12.6 m ²	136 sq ft
Living/Kitchen	6.20 x 3.64 m	20ft 4" x 11ft 11"
Bdroom	4.39 x 2.66 m	14ft 5" x 8ft 9"
Courtyard	2.04 x 6.52 m	6ft 8" x 21ft 5"

1 BEDROOM	E-01-06	
NSA	53.4 m ²	575 sq ft
Living/Kitchen	6.69 x 3.49 m	21ft 11" x 11ft 5"
Bedroom	3.76 x 3.60 m	12ft 4" x 11ft 10"

1 BEDROOM	E-01-07	
NSA	53.4 m ²	575 sq ft
Living/Kitchen	6.70 x 3.49 m	22ft 0" x 11ft 5"
Bedroom	3.76 x 3.61 m	12ft 4" x 11ft 10"

1 BEDROOM	E-01-11	
NSA	56.3 m ²	606 sq ft
Courtyard	6.1 m ²	66 sq ft
Living/Kitchen	6.70 x 3.95 m	22ft 0" x 13ft 0"
Bedroom	3.78 x 3.55 m	12ft 5" x 11ft 8"
Courtyard	1.65 x 4.37 m	5ft 5" x 14ft 4"

1 BEDROOM	F-01-01	
NSA	51.9 m ²	559 sq ft
Courtyard	16.2 m ²	174 sq ft
Living/Kitchen	3.65 x 5.75 m	12ft 0" x 18ft 10"
Bedroom	3.39 x 3.26 m	11ft 1" x 10ft 8"
Courtyard	7.64 x 2.23 m	25ft 1" x 7ft 4"

1 BEDROOM	F-01-03	
NSA	54.2 m ²	583 sq ft
Courtyard	14.6 m ²	157 sq ft
Living/Kitchen	3.53 x 6.70 m	11ft 7" x 22ft 0"
Bedroom	3.61 x 3.78 m	11ft 10" x 12ft 5"
Courtyard	7.44 x 1.98 m	9ft 0" x 6ft 6"

2 BEDROOM	E-01-08	
NSA	76.3 m ²	821 sq ft
Balcony	4.5 m ²	48 sq ft
Living/Kitchen	6.69 x 3.43 m	21ft 11" x 11ft 3"
Bedroom 1	4.58 x 2.75 m	15ft 0" x 9ft 0"
Bedroom 2	3.28 x 3.13 m	10ft 9" x 10ft 3"
Balcony	2.74 x 1.67 m	9ft 0" x 5ft 6"

2 BEDROOM	E-01-09	
NSA	78.0 m ²	840 sq ft
Courtyard	18.5 m ²	199 sq ft
Living/Kitchen	4.74 x 5.09 m	15ft 7" x 16ft 8"
Bedroom 1	4.58 x 2.91 m	15ft 0" x 9ft 7"
Bedroom 2	3.65 x 2.99 m	12ft 0" x 9ft 10"
Courtyard	2.04 x 9.31 m	6ft 8" x 9ft 0"

2 BEDROOM	F-01-02	
NSA	75.9 m ²	817 sq ft
Courtyard	22.4 m ²	241 sq ft
Living/Kitchen	3.77 x 6.70 m	12ft 4" x 22ft 0"
Bedroom 1	2.75 x 5.08 m	9ft 0" x 16ft 8"
Bedroom 2	2.82 x 3.10 m	9ft 3" x 10ft 2"
Courtyard	10.41 x 2.23 m	9ft 0" x 7ft 4"

2 BEDROOM	F-01-04	
NSA	81.1 m ²	873 sq ft
Courtyard	20.0 m ²	215 sq ft
Living/Kitchen	6.04 x 3.11 m	19ft 10" x 10ft 2"
Bedroom 1	3.40 x 3.27 m	11ft 2" x 10ft 9"
Bedroom 2	2.84 x 4.09 m	9ft 4" x 13ft 5"
Courtyard	10.05 x 1.80 m	33ft 0" x 5ft 11"

2 BEDROOM	F-01-05	
NSA	76.1 m ²	819 sq ft
Balcony	4.6 m ²	50 sq ft
Living/Kitchen	4.14 x 6.05 m	13ft 7" x 19ft 10"
Bedroom 1	2.75 x 5.08 m	9ft 0" x 16ft 8"
Bedroom 2	3.35 x 3.20 m	18ft 0" x 10ft 6"
Balcony	2.74 x 1.67 m	9ft 0" x 5ft 6"

2 BEDROOM DUPLEX	E-00-02	
NSA	100.5 m ²	1,081 sq ft
Bedroom 1	3.98 x 3.45 m	13ft 1" x 11ft 4"
Bedroom 2	3.67 x 3.02 m	12ft 0" x 9ft 11"

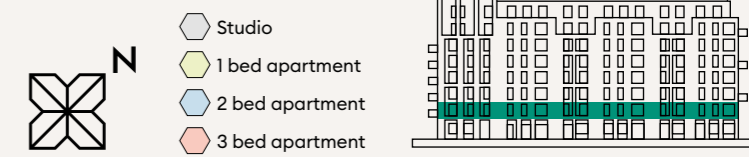
2 BEDROOM DUPLEX	F-00-01	
NSA	106.5 m ²	1,147 sq ft
Bedroom 1	3.73 x 3.76 m	12ft 3" x 12ft 4"
Bedroom 2	3.37 x 3.62 m	11ft 1" x 11ft 11"

2 BEDROOM DUPLEX	F-00-03	
NSA	106.7 m ²	1,148 sq ft
Bedroom 1	3.22 x 3.98 m	10ft 7" x 13ft 1"
Bedroom 2	3.37 x 3.62 m	11ft 1" x 11ft 11"

3 BEDROOM DUPLEX	E-00-01	
NSA	140.4 m ²	1,511 sq ft
Balcony	4.6 m ²	50 sq ft
Bedroom 1	3.56 x 4.58 m	11ft 8" x 15ft 0"
Bedroom 2	3.62 x 2.81 m	11ft 11" x 9ft 3"
Bedroom 3	3.38 x 3.08 m	11ft 1" x 10ft 1"
Balcony	2.74 x 1.67 m	5ft 6" x 9ft 0"

3 BEDROOM DUPLEX	F-00-02	
NSA	154.4 m ²	1,663 sq ft
Balcony	4.6 m ²	50 sq ft
Bedroom 1	3.25 x 5.08 m	10ft 8" x 16ft 8"
Bedroom 2	3.65 x 3.61 m	12ft 0" x 11ft 10"
Bedroom 3	2.75 x 3.79 m	9ft 0" x 12ft 5"
Balcony	2.74 x 1.67 m	9ft 0" x 5ft 6"

3 BEDROOM DUPLEX	F-00-04	
NSA	161.6 m ²	1,739 sq ft
Balcony	4.6 m ²	50 sq ft
Bedroom 1	4.59 x 3.54 m	15ft 1" x 11ft 7"
Bedroom 2	3.99 x 3.24 m	13ft 1" x 10ft 8"
Bedroom 3	4.21 x 2.73 m	13ft 10" x 8ft 11"
Balcony	2.74 x 1.67 m	9ft 0" x 5ft 6"



Floorplans and listed apartment areas are for approximate measurements only. Dimensions are not intended to be used for carpet sizes, appliance sizes or items of furniture. Furniture shown is not included.

2



STUDIO E-02-16

NSA	46.2 m²	497 sq ft
Living/Kitchen	6.20 x 3.64 m	20ft 4" x 11ft 0"
Bedroom	4.39 x 2.66 m	14ft 5" x 8ft 9"

1 BEDROOM E-02-11

NSA	50.4 m²	543 sq ft
Living/Kitchen	5.60 x 3.55 m	18ft 4" x 11ft 8"
Bedroom	3.26 x 2.77 m	10ft 8" x 9ft 1"

1 BEDROOM E-02-12

NSA	53.4 m²	575 sq ft
Living/Kitchen	6.69 x 3.49 m	22ft 11" x 11ft 5"
Bedroom	3.76 x 3.61 m	12ft 4" x 11ft 10"

1 BEDROOM E-02-13

NSA	53.4 m²	575 sq ft
Living/Kitchen	6.70 x 3.49 m	22ft 11" x 11ft 5"
Bedroom	3.76 x 3.61 m	12ft 4" x 11ft 10"

1 BEDROOM E-02-17

NSA	56.9 m²	612 sq ft
Living/Kitchen	6.70 x 3.95 m	22ft 0" x 13ft 0"
Bedroom	3.78 x 3.55 m	12ft 5" x 11ft 8"

1 BEDROOM F-02-01

NSA	52.0 m²	560 sq ft
Living/Kitchen	3.65 x 5.75 m	12ft 0" x 18ft 10"
Bedroom	3.39 x 3.26 m	11ft 1" x 10ft 8"

1 BEDROOM F-02-03

NSA	54.3 m²	584 sq ft
Living/Kitchen	3.53 x 6.70 m	11ft 7" x 22ft 0"
Bedroom	3.61 x 3.78 m	11ft 10" x 12ft 5"

1 BEDROOM F-02-06

NSA	52.9 m²	569 sq ft
Living/Kitchen	3.79 x 5.60 m	12ft 5" x 18ft 4"
Bedroom	2.81 x 3.26 m	9ft 3" x 10ft 8"

1 BEDROOM F-02-08

NSA	53.4 m²	575 sq ft
Living/Kitchen	3.49 x 6.70 m	11ft 5" x 22ft 0"
Bedroom	3.60 x 3.76 m	11ft 10" x 12ft 4"

2 BEDROOM E-02-10

NSA	86.5 m²	931 sq ft
Balcony	5.1 m²	55 sq ft
Living/Kitchen	6.85 x 4.45 m	22ft 6" x 14ft 7"
Bedroom 1	3.44 x 4.58 m	11ft 3" x 15ft 0"
Bedroom 2	3.51 x 2.75 m	11ft 6" x 9ft 0"
Balcony	1.67 x 2.74 m	5ft 6" x 9ft 0"

2 BEDROOM E-02-14

NSA	76.3 m²	821 sq ft
Balcony	8.3 m²	89 sq ft
Living/Kitchen	6.69 x 3.42 m	21ft 11" x 11ft 3"
Bedroom 1	4.58 x 2.75 m	15ft 0" x 9ft 0"
Bedroom 2	3.28 x 3.13 m	10ft 9" x 10ft 3"
Balcony	1.99 x 3.97 m	6ft 6" x 13ft 0"

2 BEDROOM E-02-15

NSA	78.3 m²	843 sq ft
Balcony	8.5 m²	91 sq ft
Living/Kitchen	4.74 x 5.10 m	15ft 7" x 16ft 9"
Bedroom 1	4.58 x 2.91 m	15ft 0" x 9ft 7"
Bedroom 2	3.65 x 2.99 m	12ft 0" x 9ft 10"
Balcony	3.97 x 1.99 m	13ft 0" x 9ft 0"

2 BEDROOM F-02-02

NSA	76.1 m²	819 sq ft
Balcony	5.1 m²	55 sq ft
Living/Kitchen	3.77 x 6.70 m	12ft 4" x 22ft 0"
Bedroom 1	2.75 x 5.08 m	9ft 0" x 16ft 8"
Bedroom 2	2.82 x 3.10 m	9ft 3" x 10ft 2"
Balcony	2.74 x 1.67 m	9ft 0" x 5ft 6"

2 BEDROOM F-02-04

NSA	81.3 m²	875 sq ft
Balcony	5.0 m²	54 sq ft
Living/Kitchen	6.04 x 3.11 m	19ft 10" x 10ft 2"
Bedroom 1	3.40 x 3.27 m	11ft 2" x 10ft 9"
Bedroom 2	2.84 x 4.09 m	9ft 4" x 13ft 5"
Balcony	1.67 x 2.74 m	5ft 6" x 9ft 0"

2 BEDROOM F-02-05

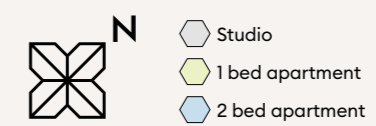
NSA	81.3 m²	875 sq ft
Balcony	5.1 m²	55 sq ft
Living/Kitchen	5.04 x 5.04 m	16ft 6" x 16ft 6"
Bedroom 1	2.96 x 4.02 m	9ft 9" x 13ft 2"
Bedroom 2	3.00 x 3.35 m	9ft 10" x 11ft 0"
Balcony	2.74 x 1.67 m	9ft 0" x 5ft 6"

2 BEDROOM F-02-07

NSA	77.6 m²	835 sq ft
Balcony	5.1 m²	55 sq ft
Living/Kitchen	3.94 x 6.69 m	12ft 11" x 21ft 11"
Bedroom 1	2.72 x 5.08 m	8ft 11" x 16ft 8"
Bedroom 2	2.98 x 3.15 m	9ft 9" x 10ft 4"
Balcony	2.74 x 1.67 m	9ft 0" x 5ft 6"

2 BEDROOM F-02-09

NSA	76.1 m²	819 sq ft
Balcony	5.1 m²	55 sq ft
Living/Kitchen	4.10 x 6.05 m	13ft 5" x 9ft 10"
Bedroom 1	2.75 x 5.08 m	9ft 0" x 16ft 8"
Bedroom 2	3.39 x 3.20 m	11ft 1" x 10ft 6"
Balcony	2.74 x 1.67 m	9ft 0" x 5ft 6"



Floorplans and listed apartment areas are for approximate measurements only. Dimensions are not intended to be used for carpet sizes, appliance sizes or items of furniture. Furniture shown is not included.

3



STUDIO E-03-16

NSA	45.6 m²	491 sq ft
Living/Kitchen	6.20 x 3.64 m	20ft 4" x 11ft 11"
Bedroom	4.39 x 2.66 m	14ft 5" x 8ft 9"

1 BEDROOM E-03-11

NSA	50.4 m²	543 sq ft
Living/Kitchen	5.60 x 3.55 m	18ft 4" x 11ft 8"
Bedroom	3.26 x 2.77 m	10ft 8" x 9ft 1"

1 BEDROOM E-03-12

NSA	53.4 m²	575 sq ft
Living/Kitchen	6.69 x 3.49 m	22ft 11" x 11ft 5"
Bedroom	3.76 x 3.61 m	12ft 4" x 11ft 10"

1 BEDROOM E-03-13

NSA	53.4 m²	575 sq ft
Living/Kitchen	6.70 x 3.49 m	22ft 11" x 11ft 5"
Bedroom	3.76 x 3.61 m	12ft 4" x 11ft 10"

1 BEDROOM E-03-17

NSA	56.9 m²	612 sq ft
Living/Kitchen	6.70 x 3.95 m	22ft 0" x 13ft 0"
Bedroom	3.78 x 3.55 m	12ft 5" x 11ft 8"

1 BEDROOM F-03-01

NSA	51.4 m²	553 sq ft
Living/Kitchen	3.65 x 5.75 m	12ft 0" x 18ft 10"
Bedroom	3.39 x 3.26 m	11ft 1" x 10ft 8"

1 BEDROOM F-03-03

NSA	53.7 m²	578 sq ft
Living/Kitchen	3.53 x 6.70 m	11ft 7" x 22ft 0"
Bedroom	3.61 x 3.78 m	11ft 10" x 12ft 5"

1 BEDROOM F-03-06

NSA	52.9 m²	569 sq ft
Living/Kitchen	3.79 x 5.60 m	12ft 5" x 18ft 4"
Bedroom	2.81 x 3.26 m	9ft 3" x 10ft 8"

1 BEDROOM F-03-08

NSA	53.4 m²	575 sq ft
Living/Kitchen	3.49 x 6.70 m	11ft 5" x 22ft 0"
Bedroom	3.60 x 3.76 m	11ft 10" x 12ft 4"

2 BEDROOM E-03-10

NSA	86.5 m²	931 sq ft
Balcony	5.1 m²	55 sq ft
Living/Kitchen	6.85 x 4.45 m	22ft 6" x 14ft 7"
Bedroom 1	3.44 x 4.58 m	11ft 3" x 25ft 0"
Bedroom 2	3.51 x 2.75 m	11ft 6" x 9ft 0"
Balcony	1.67 x 2.74 m	5ft 6" x 9ft 0"

2 BEDROOM E-03-14

NSA	75.7 m²	815 sq ft
Balcony	5.0 m²	54 sq ft
Living/Kitchen	6.69 x 3.37 m	21ft 11" x 11ft 1"
Bedroom 1	4.58 x 2.80 m	15ft 0" x 9ft 2"
Bedroom 2	3.28 x 3.13 m	10ft 9" x 10ft 3"
Balcony	2.74 x 1.67 m	9ft 0" x 5ft 6"

2 BEDROOM E-03-15

NSA	77.1 m²	830 sq ft
Balcony	5.0 m²	54 sq ft
Living/Kitchen	4.74 x 5.10 m	15ft 7" x 16ft 9"
Bedroom 1	4.58 x 2.91 m	15ft 0" x 9ft 7"
Bedroom 2	3.65 x 2.99 m	12ft 0" x 9ft 10"
Balcony	1.65 x 2.74 m	5ft 5" x 9ft 0"

2 BEDROOM F-03-02

NSA	75.8 m²	816 sq ft
Balcony	5.0 m²	54 sq ft
Living/Kitchen	3.77 x 6.70 m	12ft 4" x 22ft 0"
Bedroom 1	2.75 x 5.08 m	9ft 0" x 16ft 8"
Bedroom 2	2.82 x 3.10 m	9ft 3" x 10ft 2"
Balcony	2.74 x 1.67 m	9ft 0" x 5ft 6"

2 BEDROOM F-03-04

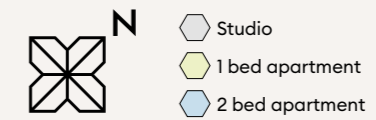
NSA	81.3 m²	875 sq ft
Balcony	5.1 m²	55 sq ft
Living/Kitchen	6.04 x 3.11 m	19ft 10" x 10ft 2"
Bedroom 1	3.40 x 3.27 m	11ft 2" x 10ft 9"
Bedroom 2	2.84 x 4.09 m	9ft 4" x 13ft 5"
Balcony	2.74 x 1.67 m	9ft 0" x 5ft 6"

2 BEDROOM F-03-07

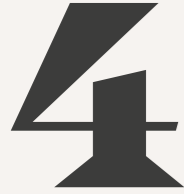
NSA	77.6 m²	835 sq ft
Balcony	5.1 m²	55 sq ft
Living/Kitchen	3.94 x 6.69 m	12ft 11" x 21ft 11"
Bedroom 1	2.72 x 5.08 m	8ft 11" x 16ft 8"
Bedroom 2	2.98 x 3.15 m	9ft 9" x 10ft 4"
Balcony	2.74 x 1.67 m	9ft 0" x 5ft 6"

2 BEDROOM F-03-09

NSA	76.1 m²	819 sq ft
Balcony	5.1 m²	55 sq ft
Living/Kitchen	4.10 x 6.05 m	13ft 5" x 19ft 10"
Bedroom 1	2.75 x 5.08 m	9ft 0" x 16ft 8"
Bedroom 2	3.39 x 3.20 m	11ft 1" x 10ft 6"
Balcony	2.74 x 1.67 m	9ft 0" x 5ft 6"



Floorplans and listed apartment areas are for approximate measurements only. Dimensions are not intended to be used for carpet sizes, appliance sizes or items of furniture. Furniture shown is not included.



STUDIO E-04-16

NSA	45.6 m²	491 sq ft
Living/Kitchen	6.20 x 4.37 m	20ft 4" x 14ft 4"
Bedroom	4.39 x 1.93 m	14ft 5" x 6ft 4"

1 BEDROOM E-04-11

NSA	50.4 m²	543 sq ft
Living/Kitchen	5.60 x 3.55 m	18ft 4" x 11ft 8"
Bedroom	3.26 x 2.77 m	10ft 8" x 9ft 1"

1 BEDROOM E-04-12

NSA	53.4 m²	575 sq ft
Living/Kitchen	6.69 x 3.49 m	22ft 11" x 11ft 5"
Bedroom	3.76 x 3.61 m	12ft 4" x 11ft 10"

1 BEDROOM E-04-13

NSA	53.4 m²	575 sq ft
Living/Kitchen	6.70 x 3.49 m	22ft 11" x 11ft 5"
Bedroom	3.76 x 3.61 m	12ft 4" x 11ft 10"

1 BEDROOM E-04-17

NSA	56.9 m²	612 sq ft
Living/Kitchen	6.70 x 3.95 m	22ft 0" x 13ft 0"
Bedroom	3.78 x 3.55 m	12ft 5" x 11ft 8"

1 BEDROOM F-04-01

NSA	51.4 m²	553 sq ft
Living/Kitchen	3.65 x 5.75 m	12ft 0" x 18ft 10"
Bedroom	3.39 x 3.26 m	11ft 1" x 10ft 8"

1 BEDROOM F-04-03

NSA	53.7 m²	578 sq ft
Living/Kitchen	3.53 x 6.70 m	11ft 7" x 22ft 0"
Bedroom	3.61 x 3.78 m	11ft 10" x 12ft 5"

1 BEDROOM F-04-06

NSA	52.9 m²	569 sq ft
Living/Kitchen	3.79 x 5.60 m	12ft 5" x 18ft 4"
Bedroom	2.81 x 3.26 m	9ft 3" x 10ft 8"

1 BEDROOM F-04-08

NSA	53.4 m²	575 sq ft
Living/Kitchen	3.49 x 6.70 m	11ft 5" x 22ft 0"
Bedroom	3.60 x 3.76 m	11ft 10" x 12ft 4"

2 BEDROOM E-04-10

NSA	86.5 m²	931 sq ft
Balcony	5.1 m²	55 sq ft
Living/Kitchen	6.85 x 4.45 m	22ft 6" x 14ft 7"
Bedroom 1	3.44 x 4.58 m	11ft 3" x 15ft 0"
Bedroom 2	3.51 x 2.75 m	11ft 6" x 9ft 0"
Balcony	1.67 x 2.74 m	5ft 6" x 9ft 0"

2 BEDROOM E-04-14

NSA	76.1 m²	819 sq ft
Balcony	8.3 m²	89 sq ft
Living/Kitchen	6.69 x 3.42 m	21ft 11" x 11ft 3"
Bedroom 1	4.58 x 2.75 m	15ft 0" x 9ft 0"
Bedroom 2	3.28 x 3.13 m	10ft 9" x 10ft 3"
Balcony	1.99 x 3.97 m	6ft 6" x 13ft 0"

2 BEDROOM E-04-15

NSA	77.1 m²	830 sq ft
Balcony	8.5 m²	91 sq ft
Living/Kitchen	4.74 x 5.10 m	15ft 7" x 16ft 9"
Bedroom 1	4.58 x 2.91 m	15ft 0" x 9ft 7"
Bedroom 2	3.65 x 2.99 m	12ft 0" x 9ft 10"
Balcony	3.97 x 1.99 m	13ft 0" x 6ft 6"

2 BEDROOM F-04-02

NSA	75.2 m²	809 sq ft
Balcony	5.0 m²	54 sq ft
Living/Kitchen	3.77 x 6.70 m	12ft 4" x 22ft 0"
Bedroom 1	2.75 x 5.08 m	9ft 0" x 16ft 8"
Bedroom 2	2.82 x 3.10 m	9ft 3" x 10ft 2"
Balcony	2.74 x 1.67 m	9ft 0" x 5ft 6"

2 BEDROOM F-04-04

NSA	80.4 m²	865 sq ft
Balcony	5.0 m²	54 sq ft
Living/Kitchen	6.04 x 3.11 m	19ft 10" x 10ft 2"
Bedroom 1	3.40 x 3.27 m	11ft 2" x 10ft 9"
Bedroom 2	2.84 x 4.09 m	9ft 4" x 13ft 5"
Balcony	1.67 x 2.74 m	5ft 6" x 9ft 0"

2 BEDROOM F-04-05

NSA	81.3 m²	875 sq ft
Balcony	5.1 m²	55 sq ft
Living/Kitchen	5.04 x 5.04 m	16ft 6" x 16ft 6"
Bedroom 1	2.96 x 4.02 m	9ft 9" x 13ft 2"
Bedroom 2	3.00 x 3.35 m	9ft 10" x 11ft 0"
Balcony	2.74 x 1.67 m	9ft 0" x 5ft 6"

2 BEDROOM F-04-07

NSA	77.6 m²	835 sq ft
Balcony	5.1 m²	55 sq ft
Living/Kitchen	3.94 x 6.69 m	12ft 11" x 21ft 11"
Bedroom 1	2.72 x 5.08 m	8ft 11" x 16ft 8"
Bedroom 2	2.98 x 3.15 m	9ft 9" x 10ft 4"
Balcony	2.74 x 1.67 m	9ft 0" x 5ft 6"

2 BEDROOM F-04-09

NSA	76.1 m²	819 sq ft
Balcony	5.1 m²	55 sq ft
Living/Kitchen	4.10 x 6.05 m	13ft 5" x 9ft 10"
Bedroom 1	2.75 x 5.08 m	9ft 0" x 16ft 8"
Bedroom 2	3.39 x 3.20 m	11ft 1" x 10ft 6"
Balcony	2.74 x 1.67 m	9ft 0" x 5ft 6"



- Studio
- 1 bed apartment
- 2 bed apartment



Floorplans and listed apartment areas are for approximate measurements only. Dimensions are not intended to be used for carpet sizes, appliance sizes or items of furniture. Furniture shown is not included.

5



STUDIO E-05-16

NSA	45.6 m²	491 sq ft
Living/Kitchen	6.20 x 4.37 m	20ft 4" x 14ft 4"
Bedroom	4.39 x 1.93 m	14ft 5" x 6ft 4"

1 BEDROOM E-05-11

NSA	50.4 m²	543 sq ft
Living/Kitchen	5.60 x 3.55 m	18ft 4" x 11ft 8"
Bedroom	3.26 x 2.77 m	10ft 8" x 9ft 1"

1 BEDROOM E-05-12

NSA	53.4 m²	575 sq ft
Living/Kitchen	6.69 x 3.49 m	22ft 11" x 11ft 5"
Bedroom	3.76 x 3.61 m	12ft 4" x 11ft 10"

1 BEDROOM E-05-13

NSA	53.4 m²	575 sq ft
Living/Kitchen	6.70 x 3.49 m	22ft 11" x 11ft 5"
Bedroom	3.76 x 3.61 m	12ft 4" x 11ft 10"

2 BEDROOM E-05-14

1 BEDROOM E-05-13

1 BEDROOM E-05-12

1 BEDROOM E-05-11

2 BEDROOM E-05-15

STUDIO E-05-16

1 BEDROOM E-05-17

1 BEDROOM F-05-01

2 BEDROOM F-05-02

1 BEDROOM F-05-03

2 BEDROOM F-05-04

2 BEDROOM E-05-10

2 BEDROOM F-05-09

1 BEDROOM F-05-08

2 BEDROOM F-05-07

1 BEDROOM F-05-06

2 BEDROOM F-05-05

1 BEDROOM E-05-17

NSA	56.9 m²	612 sq ft
Living/Kitchen	6.70 x 3.95 m	22ft 0" x 13ft 0"
Bedroom	3.78 x 3.55 m	12ft 5" x 11ft 8"

1 BEDROOM F-05-01

NSA	51.4 m²	553 sq ft
Living/Kitchen	3.65 x 5.75 m	12ft 0" x 18ft 10"
Bedroom	3.39 x 3.26 m	11ft 1" x 10ft 8"

1 BEDROOM F-05-03

NSA	53.7 m²	578 sq ft
Living/Kitchen	3.53 x 6.70 m	11ft 7" x 22ft 0"
Bedroom	3.61 x 3.78 m	11ft 10" x 12ft 5"

1 BEDROOM F-05-06

NSA	52.9 m²	569 sq ft
Living/Kitchen	3.79 x 5.60 m	12ft 5" x 18ft 4"
Bedroom	2.81 x 3.26 m	9ft 3" x 10ft 8"

1 BEDROOM F-05-08

NSA	53.4 m²	575 sq ft
Living/Kitchen	3.49 x 6.70 m	11ft 5" x 22ft 0"
Bedroom	3.60 x 3.76 m	11ft 10" x 12ft 4"

2 BEDROOM E-05-10

NSA	86.5 m²	931 sq ft
Balcony	5.1 m²	55 sq ft
Living/Kitchen	6.85 x 4.45 m	22ft 6" x 14ft 7"
Bedroom 1	3.44 x 4.58 m	11ft 3" x 15ft 0"
Bedroom 2	3.51 x 2.75 m	11ft 6" x 9ft 0"
Balcony	1.67 x 2.74 m	5ft 6" x 9ft 0"

2 BEDROOM E-05-14

NSA	75.7 m²	815 sq ft
Balcony	5.0 m²	54 sq ft
Living/Kitchen	6.69 x 3.38 m	21ft 11" x 11ft 1"
Bedroom 1	4.58 x 2.78 m	15ft 0" x 9ft 1"
Bedroom 2	3.28 x 3.13 m	10ft 9" x 10ft 3"
Balcony	2.74 x 1.67 m	9ft 0" x 5ft 6"

2 BEDROOM E-05-15

NSA	77.1 m²	830 sq ft
Balcony	5.0 m²	54 sq ft
Living/Kitchen	4.74 x 5.11 m	15ft 7" x 16ft 9"
Bedroom 1	4.58 x 2.91 m	15ft 0" x 9ft 7"
Bedroom 2	3.65 x 2.99 m	12ft 0" x 9ft 10"
Balcony	1.65 x 2.74 m	5ft 5" x 9ft 0"

2 BEDROOM F-05-02

NSA	75.2 m²	809 sq ft
Balcony	5.0 m²	54 sq ft
Living/Kitchen	3.77 x 6.70 m	12ft 4" x 22ft 0"
Bedroom 1	2.75 x 5.08 m	9ft 0" x 16ft 8"
Bedroom 2	2.82 x 3.10 m	9ft 3" x 10ft 2"
Balcony	2.74 x 1.67 m	9ft 0" x 5ft 6"

2 BEDROOM F-05-04

NSA	80.4 m²	865 sq ft
Balcony	5.0 m²	54 sq ft
Living/Kitchen	6.04 x 3.11 m	19ft 10" x 10ft 2"
Bedroom 1	3.40 x 3.27 m	11ft 2" x 10ft 9"
Bedroom 2	2.84 x 4.09 m	9ft 4" x 13ft 5"
Balcony	2.74 x 1.67 m	9ft 0" x 5ft 6"

2 BEDROOM F-05-05

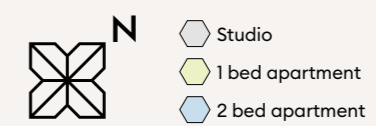
NSA	81.3 m²	875 sq ft
Balcony	5.1 m²	55 sq ft
Living/Kitchen	5.04 x 5.04 m	16ft 6" x 16ft 6"
Bedroom 1	2.96 x 4.02 m	9ft 9" x 13ft 2"
Bedroom 2	3.00 x 3.35 m	9ft 10" x 11ft 0"
Balcony	2.74 x 1.67 m	9ft 0" x 5ft 6"

2 BEDROOM F-05-07

NSA	77.6 m²	835 sq ft
Balcony	5.1 m²	55 sq ft
Living/Kitchen	3.94 x 6.69 m	12ft 11" x 21ft 11"
Bedroom 1	2.72 x 5.08 m	8ft 11" x 16ft 8"
Bedroom 2	2.98 x 3.15 m	9ft 9" x 10ft 4"
Balcony	2.74 x 1.67 m	9ft 0" x 5ft 6"

2 BEDROOM F-05-09

NSA	76.1 m²	819 sq ft
Balcony	5.1 m²	55 sq ft
Living/Kitchen	4.10 x 6.05 m	13ft 5" x 19ft 10"
Bedroom 1	2.75 x 5.08 m	9ft 0" x 16ft 8"
Bedroom 2	3.39 x 3.20 m	11ft 1" x 10ft 6"
Balcony	2.74 x 1.67 m	9ft 0" x 5ft 6"



Floorplans and listed apartment areas are for approximate measurements only. Dimensions are not intended to be used for carpet sizes, appliance sizes or items of furniture. Furniture shown is not included.

6



1 BEDROOM F-06-01

NSA	51.4 m²	553 sq ft
Living/Kitchen	3.65 x 5.75 m	12ft 0" x 18ft 10"
Bedroom	3.39 x 3.26 m	11ft 1" x 10ft 8"

1 BEDROOM F-06-03

NSA	53.7 m²	578 sq ft
Living/Kitchen	3.53 x 6.70 m	11ft 7" x 22ft 0"
Bedroom	3.61 x 3.78 m	11ft 10" x 12ft 5"

2 BEDROOM E-06-09

NSA	73.9 m²	795 sq ft
Living/Kitchen	6.70 x 4.25 m	22ft 0" x 13ft 11"
Bedroom 1	4.58 x 2.75 m	15ft 0" x 9ft 0"
Bedroom 2	3.24 x 2.75 m	10ft 8" x 9ft 0"

2 BEDROOM E-06-12

NSA	82.4 m²	887 sq ft
Living/Kitchen	6.69 x 3.98 m	21ft 11" x 13ft 1"
Bedroom 1	4.58 x 2.75 m	15ft 0" x 9ft 0"
Bedroom 2	3.26 x 3.49 m	10ft 8" x 11ft 5"

1 BEDROOM F-06-01

NSA	51.4 m²	553 sq ft
Living/Kitchen	3.65 x 5.75 m	12ft 0" x 18ft 10"
Bedroom	3.39 x 3.26 m	11ft 1" x 10ft 8"

2 BEDROOM F-06-02

NSA	75.2 m²	809 sq ft
Living/Kitchen	3.77 x 6.70 m	12ft 4" x 22ft 0"
Bedroom 1	2.75 x 5.08 m	9ft 0" x 16ft 8"
Bedroom 2	2.82 x 3.70 m	9ft 3" x 12ft 2"
Balcony	2.74 x 1.67 m	9ft 0" x 5ft 6"

1 BEDROOM F-06-03

NSA	53.7 m²	578 sq ft
Living/Kitchen	3.53 x 6.70 m	11ft 7" x 22ft 0"
Bedroom	3.61 x 3.78 m	11ft 10" x 12ft 5"

2 BEDROOM F-06-04

NSA	80.4 m²	865 sq ft
Living/Kitchen	6.04 x 3.98 m	19ft 10" x 13ft 1"
Bedroom 1	3.40 x 3.27 m	11ft 2" x 10ft 9"
Bedroom 2	2.84 x 3.56 m	9ft 4" x 11ft 8"
Balcony	1.67 x 2.74 m	5ft 6" x 9ft 0"

3 BEDROOM F-06-07

NSA	107.8 m²	1,160 sq ft
Living/Kitchen	5.55 x 7.54 m	18ft 3" x 24ft 9"
Bedroom 1	3.59 x 3.33 m	11ft 9" x 10ft 11"
Bedroom 2	3.48 x 3.48 m	11ft 5" x 11ft 5"
Bedroom 3	2.75 x 3.19 m	9ft 0" x 10ft 6"
Terrace A	10.28 x 1.25 m	33ft 9" x 4ft 1"
Terrace B	1.25 x 6.77 m	4ft 1" x 22ft 3"

3 BEDROOM F-06-06

NSA	118.3 m²	1,273 sq ft
Living/Kitchen	8.71 x 4.94 m	28ft 7" x 16ft 2"
Bedroom 1	2.93 x 5.08 m	9ft 7" x 16ft 8"
Bedroom 2	2.77 x 3.79 m	9ft 1" x 12ft 5"
Bedroom 3	2.75 x 3.79 m	9ft 0" x 12ft 5"
Terrace	7.66 x 1.44 m	25ft 2" x 4ft 9"

2 BEDROOM F-06-05

NSA	79.6 m²	857 sq ft
Living/Kitchen	4.73 x 5.09 m	15ft 6" x 16ft 8"
Bedroom 1	3.27 x 4.04 m	10ft 9" x 13ft 3"
Bedroom 2	2.98 x 3.31 m	9ft 9" x 10ft 10"

2 BEDROOM F-06-02

NSA	75.2 m²	809 sq ft
Living/Kitchen	3.77 x 6.70 m	12ft 4" x 22ft 0"
Bedroom 1	2.75 x 5.08 m	9ft 0" x 16ft 8"
Bedroom 2	2.82 x 3.70 m	9ft 3" x 12ft 2"
Balcony	2.74 x 1.67 m	9ft 0" x 5ft 6"

2 BEDROOM F-06-04

NSA	80.4 m²	865 sq ft
Living/Kitchen	6.04 x 3.98 m	19ft 10" x 13ft 1"
Bedroom 1	3.40 x 3.27 m	11ft 2" x 10ft 9"
Bedroom 2	2.84 x 3.56 m	9ft 4" x 11ft 8"
Balcony	1.67 x 2.74 m	5ft 6" x 9ft 0"

2 BEDROOM F-06-05

NSA	79.6 m²	857 sq ft
Living/Kitchen	4.73 x 5.09 m	15ft 6" x 16ft 8"
Bedroom 1	3.27 x 4.04 m	10ft 9" x 13ft 3"
Bedroom 2	2.98 x 3.31 m	9ft 9" x 10ft 10"

3 BEDROOM E-06-08

NSA	107.8 m²	1,160 sq ft
Living/Kitchen	5.55 x 7.54 m	18ft 3" x 24ft 9"
Bedroom 1	3.59 x 3.33 m	11ft 9" x 10ft 11"
Bedroom 2	3.48 x 3.48 m	11ft 5" x 11ft 5"
Bedroom 3	2.75 x 3.19 m	9ft 0" x 10ft 6"
Terrace A	10.28 x 1.25 m	33ft 9" x 4ft 1"
Terrace B	1.25 x 6.77 m	4ft 1" x 22ft 3"

3 BEDROOM E-06-10

NSA	111.1 m²	1,196 sq ft
Living/Kitchen	8.71 x 4.94 m	28ft 7" x 16ft 2"
Bedroom 1	2.93 x 5.08 m	9ft 7" x 16ft 8"
Bedroom 2	2.77 x 3.79 m	9ft 1" x 12ft 5"
Bedroom 3	2.75 x 3.79 m	9ft 0" x 12ft 5"
Terrace	7.66 x 1.44 m	25ft 2" x 4ft 9"

3 BEDROOM E-06-11

NSA	101.8 m²	1,096 sq ft
Living/Kitchen	4.90 x 5.07 m	16ft 1" x 16ft 8"
Bedroom 1	3.50 x 3.30 m	11ft 6" x 10ft 10"
Bedroom 2	4.90 x 2.94 m	16ft 1" x 9ft 8"
Bedroom 3	7.30 x 2.86 m	23ft 11" x 9ft 5"
Balcony	3.97 x 1.99 m	13ft 0" x 6ft 6"

3 BEDROOM E-06-11

NSA	101.8 m²	1,096 sq ft
Living/Kitchen	4.90 x 5.07 m	16ft 1" x 16ft 8"
Bedroom 1	3.50 x 3.30 m	11ft 6" x 10ft 10"
Bedroom 2	4.90 x 2.94 m	16ft 1" x 9ft 8"
Bedroom 3	7.30 x 2.86 m	23ft 11" x 9ft 5"
Balcony	3.97 x 1.99 m	13ft 0" x 6ft 6"

3 BEDROOM F-06-06

NSA	118.3 m²	1,273 sq ft
Living/Kitchen	8.71 x 4.94 m	28ft 7" x 16ft 2"
Bedroom 1	2.93 x 5.08 m	9ft 7" x 16ft 8"
Bedroom 2	2.77 x 3.79 m	9ft 1" x 12ft 5"
Bedroom 3	2.75 x 3.79 m	9ft 0" x 12ft 5"
Terrace	7.66 x 1.44 m	25ft 2" x 4ft 9"

3 BEDROOM F-06-07

NSA	117.3 m²	1,263 sq ft
Living/Kitchen	8.79 x 4.93 m	28ft 10" x 16ft 2"
Bedroom 1	2.75 x 5.08 m	9ft 0" x 16ft 8"
Bedroom 2	3.55 x 3.78 m	11ft 8" x 12ft 5"
Bedroom 3	3.35 x 3.78 m	11ft 0" x 12ft 5"
Terrace	7.66 x 1.44 m	25ft 2" x 4ft 9"



- 1 bed apartment
- 2 bed apartment
- 3 bed apartment



Floorplans and listed apartment areas are for approximate measurements only. Dimensions are not intended to be used for carpet sizes, appliance sizes or items of furniture. Furniture shown is not included.



1 BEDROOM E-07-08

NSA	51.7 m²	556 sq ft
Terrace	20.1 m²	216 sq ft
Living/Kitchen	4.95 x 5.68 m	16ft 3" x 18ft 8"
Bedroom	3.64 x 3.19 m	11ft 11" x 10ft 6"
Terrace A	1.24 x 10.64 m	4ft 1" x 34ft 11"
Terrace B	7.44 x 1.00 m	24ft 5" x 3ft 3"

1 BEDROOM E-07-09

NSA	57.9 m²	623 sq ft
Terrace	20.9 m²	225 sq ft
Living/Kitchen	3.53 x 5.58 m	11ft 7" x 18ft 4"
Bedroom	3.11 x 3.93 m	10ft 2" x 12ft 11"
Terrace A	9.24 x 1.00 m	30ft 4" x 3ft 3"
Terrace B	1.24 x 9.95 m	4ft 1" x 32ft 8"

2 BEDROOM E-07-07

NSA	81.5 m²	877 sq ft
Terrace	18.9 m²	203 sq ft
Living/Kitchen	4.96 x 5.96 m	16ft 3" x 19ft 7"
Bedroom 1	3.33 x 3.00 m	10ft 11" x 9ft 10"
Bedroom 2	3.33 x 3.30 m	10ft 11" x 10ft 10"
Terrace	1.24 x 14.61 m	4ft 1" x 47ft 11"

2 BEDROOM E-07-10

NSA	73.7 m²	793 sq ft
Terrace	16.8 m²	181 sq ft
Living/Kitchen	4.95 x 4.75 m	16ft 3" x 15ft 7"
Bedroom 1	3.33 x 3.35 m	10ft 11" x 11ft 0"
Bedroom 2	3.33 x 3.33 m	10ft 11" x 10ft 11"
Terrace	1.24 x 13.25 m	4ft 1" x 43ft 6"

2 BEDROOM F-07-01

NSA	81.0 m²	872 sq ft
Terrace	18.7 m²	201 sq ft
Living/Kitchen	7.58 x 4.96 m	24ft 10" x 16ft 3"
Bedroom 1	2.93 x 4.60 m	9ft 7" x 15ft 11"
Bedroom 2	3.32 x 3.33 m	10ft 11" x 10ft 11"
Terrace	14.79 x 1.24 m	48ft 6" x 4ft 1"

2 BEDROOM F-07-03

NSA	83.9 m²	903 sq ft
Terrace 1	14.4 m²	155 sq ft
Terrace 2	10.9 m²	117 sq ft
Living/Kitchen	6.24 x 4.29 m	20ft 6" x 14ft 11"
Bedroom 1	4.98 x 2.75 m	16ft 4" x 9ft 0"
Bedroom 2	2.67 x 3.85 m	8ft 9" x 12ft 8"
Terrace 1A	9.24 x 0.88 m	24ft 11" x 2ft 5"
Terrace 1B	7.60 x 0.74 m	30ft 4" x 2ft 11"
Terrace 2	7.66 x 1.35 m	25ft 2" x 4ft 5"

2 BEDROOM F-07-04

NSA	77.1 m²	830 sq ft
Terrace 1	8.2 m²	88 sq ft
Terrace 2	5.6 m²	60 sq ft
Living/Kitchen	2.99 x 3.24 m	9ft 10" x 10ft 8"
Bedroom 1	3.72 x 4.23 m	12ft 2" x 13ft 11"
Bedroom 2	3.23 x 2.53 m	10ft 7" x 8ft 4"
Terrace 1	9.90 x 0.74 m	32ft 6" x 2ft 5"
Terrace 2	3.82 x 1.38 m	12ft 6" x 4ft 6"

2 BEDROOM F-07-05

NSA	75.6 m²	814 sq ft
Terrace 1	8.9 m²	96 sq ft
Terrace 2	5.6 m²	60 sq ft
Kitchen	2.70 x 3.24 m	8ft 10" x 10ft 8"
Living	3.72 x 3.58 m	12ft 2" x 11ft 9"
Bedroom 1	2.75 x 5.35 m	9ft 0" x 17ft 7"
Bedroom 2	3.29 x 2.55 m	10ft 10" x 8ft 4"
Terrace 1	10.81 x 0.74 m	35ft 6" x 2ft 5"
Terrace 2	3.84 x 1.39 m	12ft 7" x 4ft 7"

3 BEDROOM E-07-06

NSA	94.6 m²	1,018 sq ft
Terrace 1	25.4 m²	273 sq ft
Terrace 2	10.2 m²	110 sq ft
Living/Kitchen	5.21 x 4.80 m	17ft 1" x 15ft 9"
Bedroom 1	3.24 x 3.33 m	10ft 8" x 10ft 11"
Bedroom 2	3.75 x 3.30 m	12ft 4" x 10ft 10"
Bedroom 3	2.04 x 4.14 m	6ft 8" x 13ft 7"
Terrace 1A	10.62 x 1.60 m	34ft 10" x 5ft 3"
Terrace 1B	1.60 x 7.05 m	5ft 3" x 23ft 2"
Terrace 2	1.24 x 8.01 m	4ft 1" x 26ft 3"

3 BEDROOM F-07-02

NSA	112.0 m²	1,206 sq ft
Terrace	33.3 m²	358 sq ft
Living/Kitchen	6.90 x 5.55 m	22ft 8" x 18ft 3"
Bedroom 1	3.18 x 3.31 m	10ft 5" x 10ft
Bedroom 2	3.27 x 3.34 m	10ft 9" x 10ft 11"
Bedroom 3	2.75 x 4.25 m	9ft 0" x 13ft 11"
Terrace A	21.39 x 1.24 m	70ft 2" x 4ft 1"
Terrace B	0.88 x 7.44 m	2ft 11" x 24ft 5"



- 1 bed apartment
- 2 bed apartment
- 3 bed apartment



Floorplans and listed apartment areas are for approximate measurements only. Dimensions are not intended to be used for carpet sizes, appliance sizes or items of furniture. Furniture shown is not included.

Specification

Building

The Ashbee is one of the first buildings in Brent Cross Town, designed by architect, Squire and Partners, with interiors by Woods Bagot. The design is an L-shaped brick building, comprising seven storeys with IO7 studio, one, two, and three-bedroom apartments and duplexes.

The building structure consists of a reinforced concrete frame and reinforced concrete piled foundations. The external envelope includes walls of a quality brick finish with pre-cast concrete windowsills and a dark-grey powder-coated metal façade at levels 6 and 7, painted metal balconies and railings, and double-glazed windows and doors to balconies and terraces respectively.

The apartments enjoy views across a number of green spaces, the internal courtyard garden or Claremont Park and the playing fields beyond.

The courtyard garden has a combination of planted landscaping and hard landscape finishes. Specific ground floor units include a private terrace adjacent to the communal residents' garden.

The Claremont Park Club

The residents' club is located on the ground floor across both buildings, The Ashbee and The Delamarre and comprises, Club Lobby, Concierge, Residents' Lounge, Gymnasium, Fitness Studio, Workspace, Meeting Room, Private Dining Room and Screening Room.

Kitchens

Fitted with both high-level units and base cupboards, in a green finish, with soft push doors, integrated extractor hood and lighting to underside of overhead cupboards.

Where applicable, a bespoke metal shelving unit frames the end of the kitchen worktop.

Worktops are a technical stone with upstand, stainless-steel undermounted sink and a white ceramic tile splashback. Where provided, kitchen islands comprise the same suite of finishes.

High-quality appliances include:

- Four zone electric induction hob. (Studios: two zone induction hob)
- Integrated and multifunction electric combination microwave and oven located in full-height cabinet. (Studios: in base unit)
- Integrated dishwasher
- Integrated full-height fridge freezer (Studios: under counter)
- Integrated cold/hot water and instant boiling water tap
- Integrated pull-out waste bins
- Washer/dryer located in the MEP cupboard

Bathrooms

Both family and en-suite bathrooms are fitted with large format porcelain tiles to the floors and a mix of porcelain, white glazed tiles and painted finish to the walls.

Bathrooms also include bespoke storage cabinet mounted on a mirrored wall, with feature lighting and low-level open storage cabinet.

Where featured, family bathrooms have baths, with walk-in showers to en-suites, both with glazed shower screen, shower mixer and detachable handset.

White ceramics with wall hung WC and wash basin.

High-quality brassware and heated towel rail all with matt black finish.

Wardrobes and Joinery

All primary bedrooms include integrated wardrobes with soft close doors, inset handles and feature a high-level shelf and hanging rail. This also extends to cloak cupboards, where provided.

Studio apartments provide a bespoke room dividing joinery feature, with open shelving at mid to high level, and a desk with drawer units at low level. This piece is finished in green with reeded glass.

Where applicable, some apartments include feature shelving.

Flooring

Light oak engineered timber floor in straight wide plank pattern to all living rooms except bathrooms and bedrooms.

Carpet in bedrooms.

Large format porcelain tiles to bathrooms.

Balconies and Terraces

Where provided, these include powder coated metal balustrades and decking.

Decoration

All internal walls, ceilings, doors, door frames and skirtings are finished in a white paint.

Heating and Cooling

Brent Cross Town has partnered with energy provider Vattenfall, to establish a sitewide heating network that will provide low carbon-emission heat to our new neighbourhood (for all energy supplies controlled by Brent Cross Town). The electricity supplier will be the choice of the user. All apartments will be individually metered for both heat and electricity.

All bedrooms and living spaces will include underfloor heating. All apartments offer openable windows for ventilation.

Electrical

Energy efficient LED lighting fitted to all rooms.

TV/FM and telephone points for broadband internet access in living room and Bedroom 1s where appropriate.

The Brent Cross Town development is served by a fibre network, with connection to the network to be arranged by the purchaser.

Hard wired smoke/heat detectors fitted as standard.

Lifts

Every apartment can be reached via a choice of four lifts.

Car Parking

Limited secure car parking spaces and cycle storage is available for residents within the basement.

Car parking is subject to availability and at an extra cost, cycle spaces at no extra cost.

Security

Fob access control to all building entrances, car park and lifts.

Entry phone system connects all apartments to main entrance door.

CCTV surveillance to public areas.

Management and 24-hour estate security.

Peace of Mind

Concierge service.

Parcel store for oversized deliveries.

All apartments benefit from a 10-year NHBC warranty.

Leasehold 999 years.

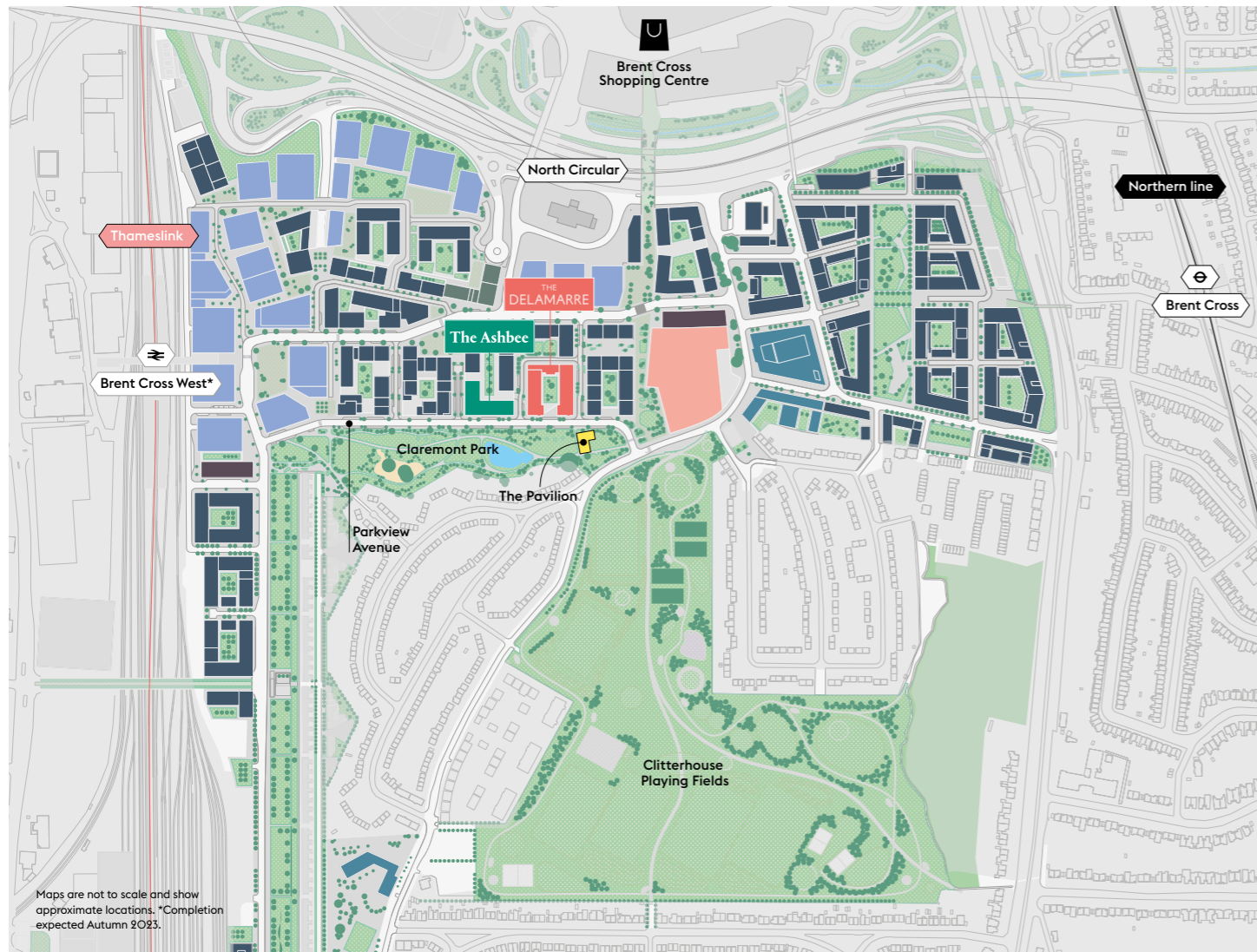
External cleaning will be carried out on a managed programme to ensure the building is kept to a high standard.

A service charge will be payable by apartment owners to cover costs of building services, building maintenance, cleaning, and insurance. A fixed contribution towards costs of Estate Management will also be payable for services such as site wide security, cleaning and maintenance, amenities, and landscaping.

Notes: A management company will be appointed to provide building management services.

The design development of The Ashbee is still ongoing and certain items of the specification may be amended to an item of equivalent or similar quality.





Maps are not to scale and show approximate locations. *Completion expected Autumn 2023.

COME AND VISIT US

Brent Cross Town
Visitor Pavilion
145 Claremont Road
Brent Cross
London
NW2 1FE

Residential Sales:
+44 (0)20 3319 0729

Follow us at:
@BRENTCROSSTOWN
#PARKTOWN



Sign up for news and register your interest at:
[BXT.UK/REGISTER](https://www.bxt.uk/register)

Find out more about living at Brent Cross Town here:



Disclaimer: Whilst reasonable effort has been made to ensure the accuracy of this document and the information contained within, this cannot be guaranteed, and no reliance whatsoever should be placed on its contents. This document makes no representation or warranty about its subject matter. Any liability under any cause of action relating to this document (howsoever arising), is excluded to the extent permitted by law. The specification included herein is the anticipated specification as at the date of this brochure and is designed only as a guide. We reserve the right to amend the specification where necessary or desirable and without notice. Computer generated images are only indicative of the quality and style of the development and are not intended to represent fully accurate depictions. Apartment and amenity designs, sizes, layouts and other details are indicative only and may be subject to change. All measurements of areas, distances or any other dimensions shown in any text or plan are indicative and for information purposes only, and may differ after construction. Any reference to use of the property does not mean that any necessary planning permission, building regulations approval or other form of consent has been obtained. Variations occur between apartment types. Please refer to the sales team for details of a particular apartment. A management company will be appointed to provide building management services. Please note that the design development of The Delamarre and The Ashbee is ongoing, and items included in the specification may be amended to items of equivalent quality without notice. Plans are not to scale. All measurements are approximate. Images of furniture and planting are shown for context only and are not supplied with the apartment. Version 2, May 2022.



Brent
Cross
Town

@BRENTCROSSTOWN
#PARKTOWN
BRENTCROSSTOWN.CO.UK