



8 Cwrt Brynteg Station Road, Radyr

£115,000 Leasehold

****RETIREMENT APARTMENT WITH BALCONY**SHOWER ROOM**NO CHAIN**** A well presented one bedroom retirement apartment on the lower ground floor in the sought after Cwrt Brynteg retirement development in popular Radyr. Communal entrance hallway with residents lounge, kitchen and laundry room. To the lower ground floor is apartment entrance hallway with large airing cupboard, lounge and diner opening to kitchen with integrated appliances, spacious double bedroom with fitted wardrobes and a separate shower room. Electric heating, double glazing, emergency pull cords throughout. Balcony overlooking the delightful communal gardens.

No Chain. EPC Rating: C

Council Tax band: TBD

Tenure: Leasehold

LOCATION

The apartment is situated on the popular Cwrt Brynteg development in Radyr. Located close to the train station where there is easy access to and from the city centre. There is also a parade of shops including a newsagent, post office, co-op, pharmacy, Italian restaurant, hairdressers, dentist and optician.

COMMUNAL ENTRANCE

Telephone intercom to all apartments, stairs and lifts to all floors. Communal lounge and kitchen for residents use. Laundry room.

APARTMENT

HALLWAY

Dimensions: 7' 8" x 6' 9" (2.34m x 2.08m). Entered via solid wooden door, hallway with large storage cupboard housing electric boiler and meters. Doors leading to all rooms.

LOUNGE

Dimensions: 19' 7" x 10' 7" (5.98m x 3.23m). A spacious lounge, electric fire with wooden mantle piece and stone hearth. Storage heater. Door to hallway. Double doors to kitchen. Double French doors opening onto balcony.

KITCHEN

Dimensions: 7' 6" x 7' 0" (2.30m x 2.15m). Appointed along three sides, eye and low level cupboards beneath laminate worktops, stainless steel 1.5 bowl sink with chrome mixer tap, four ring 'AEG' electric hob, extractor hood, integrated high level single oven/grill, integrated fridge, space for freezer. Dimplex wall heater. Tiled splashbacks. uPVC window overlooking well maintained communal garden. Double doors into lounge.

BEDROOM ONE

Dimensions: 14' 8"(max) x 12' 10" (4.49m x 3.93m). A good sized bedroom with built in folding mirrored wardrobes, storage heater. Two uPVC double glazed windows to rear. Mountain View.

SHOWER ROOM

Dimensions: 6' 8" x 5' 5" (2.05m x 1.67m). Off white suite; low level WC, wash hand basin with built in vanity with dual chrome taps, wall mirror and light, double step in shower cubicle with chrome shower, flip down seat, glass sliding shower screen, half tiled walls and wall panelling. Dimpled wall heater, heated towel rail, extractor fan.

OUTSIDE

Double French doors leading onto a private balcony. Tiled floor with cast iron metal bannister.

COMMUNAL GARDENS

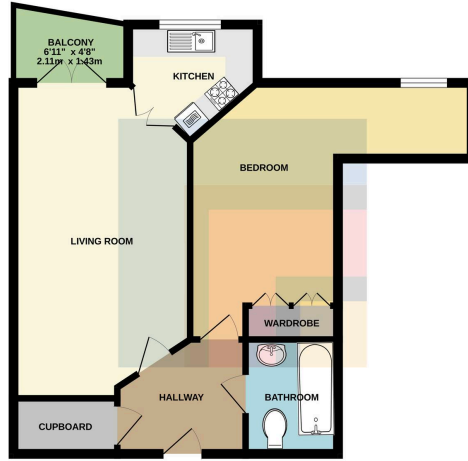
Well tended gardens to rear with parking to front.

ADDITIONAL INFORMATION

Leasehold - 125 years from 2005. Service charges Approx. £3,133 per annum which covers buildings insurance, water charges, laundry and house manager services, as well as maintenance of the lift, entry system and gardening services. Ground rent Approx. £460 per annum. Please note that a 1% fee is payable by the owner to the freeholder when the property is sold on.



GROUND FLOOR
502 sq.ft. (46.6 sq.m.) approx.



TOTAL FLOOR AREA: 502 sq.ft. (46.6 sq.m.) approx.
While every attempt has been made to ensure the accuracy of the floor plan contained here, measurements of floors, walls, ceilings and any other dimensions are not guaranteed to be exact. The floor plan is intended to provide a general impression of the layout and approximate dimensions of the property. It is not intended to be used as a legal document. The actual plan and application of law have not been tested and the publisher shall not be held responsible for any errors or omissions.

You can include any text here. The text can be modified upon generating your brochure.