

FREEHOLD



House - Mid Terrace (EPC Rating: )

894 NORTH CIRCULAR ROAD, NEASDEN,  
LONDON, NW2 7TE  
Asking Price

£420,000



HAYMILLS  
Expertise Experience Engagement



3



1



2



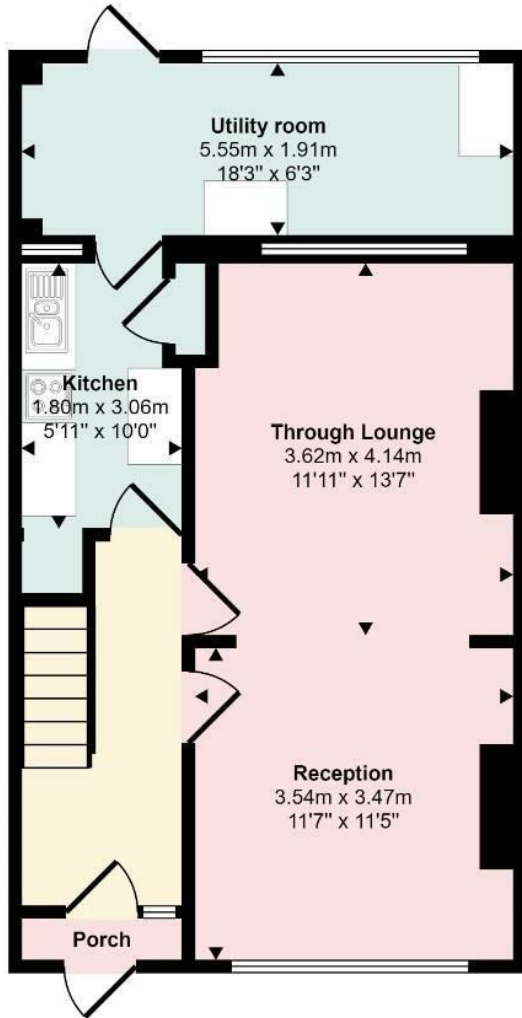
# 3 Bedroom House - Mid Terrace located in London

PROBATE / 3-BEDROOM FAMILY HOME | OFFERS INVITED - Spacious and full of potential, this vacant 3-bedroom home offers generous living space and a private garden—perfect for families or savvy investors. Prime location on the A406 (North Circular). Vacant Possession – Move straight in or refurbish. Excellent Investment Opportunity. Viewings available now – serious offers invited!

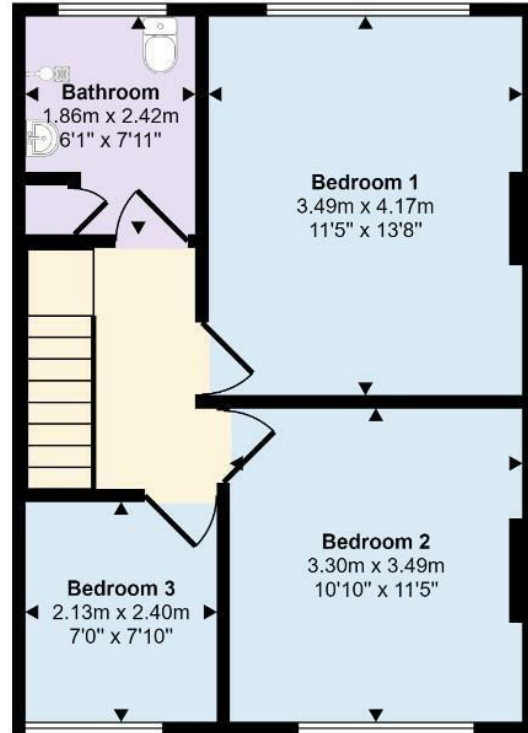


HAYMILLS SALES | 292 PRESTON ROAD, HARROW, HA3 0QA

Approx Gross Internal Area  
99 sq m / 1061 sq ft



Ground Floor  
Approx 55 sq m / 595 sq ft



First Floor  
Approx 43 sq m / 466 sq ft

This floorplan is only for illustrative purposes and is not to scale. Measurements of rooms, doors, windows, and any items are approximate and no responsibility is taken for any error, omission or mis-statement. Icons of items such as bathroom suites are representations only and may not look like the real items. Made with Made Snappy 360.

### Council Tax Band

**D**

### Energy Performance Graph

Energy Efficiency Rating		Current	Potential
Very energy efficient - lower running costs			
(92 plus) <b>A</b>			
(81-91) <b>B</b>			
(69-80) <b>C</b>			
(55-68) <b>D</b>			
(39-54) <b>E</b>			
(21-38) <b>F</b>			
(1-20) <b>G</b>			
Not energy efficient - higher running costs			
<b>England &amp; Wales</b>	EU Directive 2002/91/EC		

Call us on

**0208 904 8822**

[info@haymills.uk](mailto:info@haymills.uk)

Agents Note: Whilst every care has been taken to prepare these particulars, they are for guidance purposes only. All measurements are approximate and are for general guidance purposes only and whilst every care has been taken to ensure their accuracy, they should not be relied upon and potential buyers are advised to recheck the measurements.