



15, Moor Croft Drive, Longwell Green, Bristol,
South Gloucestershire, BS30 7DB

£359,950

We are delighted to present this well presented three-bedroom semi detached home, built in the 1980s. The property is ideally located in the ever-popular Moor Croft area of Longwell Green a location that continues to be in high demand. Perfectly positioned for local shops and well-regarded primary schools, this property offers both convenience and stylish appeal. Beautifully presented throughout, the accommodation briefly includes a welcoming hallway, a generous lounge and a kitchen/diner to the ground floor. The modern kitchen is well-equipped for cooking and socialising, which overlooks a pleasant rear garden. The garden also provides direct access to the garage. Upstairs, you will find three well-proportioned bedrooms along with a family bathroom, completing the internal accommodation. Further benefits include a driveways to the side of the property, gas central heating and Upvc double glazing. This delightful home offers a fantastic opportunity for buyers seeking a move-in ready property in a sought-after location. Early viewing is highly recommended.

Entrance

The covered entrance to the property is via a Upvc double glazed obscure door with matching side panel to the entrance hallway.

Entrance Hallway

Staircase to the first floor, tiled flooring, inset spotlights, door to the lounge and door to the kitchen dining room.

Lounge

15' 11" x 10' 6" to bay (4.85m x 3.19m)
Two Upvc double glazed windows to the front, double radiator, coving.

Kitchen / Dining Room

15' 10" x 10' 4" (4.83m x 3.14m)
Upvc double glazed window to the rear, Upvc double glazed door with matching side panels to the rear garden, range of wall and base units with square edge work surfaces, composite 1.5 bowl sink unit with mixer tap, integrated dishwasher, space for an electric cooker, cooker hood, space for a washing machine , space for a fridge/freezer, under stair storage cupboard, tiled flooring, cupboard concealing gas boiler, coving, space for a table and chairs.

First Floor Landing

Radiator, doors into bedrooms and the family bathroom, access to an insulated, part boarded loft space with a ladder and light.

Bedroom One

13' 8" x 10' 7" (4.17m x 3.23m)
Upvc double glazed window to the rear, radiator, fitted mirror front wardrobes with lighting and sliding doors, radiator, coving.

Bedroom Two

10' 8" x 10' 8" (3.25m x 3.24m)
Upvc double glazed window to the front, radiator, coving.

Bedroom Three

7' 9" x 6' 10" (2.36m x 2.09m)
Upvc double glazed window to the front, radiator.

Bathroom

Upvc double glazed obscure window to the rear, panel bath with mains shower, low level WC, vanity wash hand basin with mixer tap, radiator, tiled floor, coving, door to airing cupboard.





Garage

16' 9" x 7' 0" (5.10m x 2.13m)

The garage is currently split in two, the front section 7'10" X 7' provides useful storage space whilst the rear section 9' 9" X 7' 10" is used as a workshop with power and light and a Upvc double glazed window to the rear and a courtesy door to the side.

Rear Garden

The rear garden is enclosed and easily maintained having been laid to patio with raised flower and shrub flower beds, outside tap and gated access to the side of the property.



Front garden

The front garden is laid to shingle with mature shrub and flower beds. There is a driveway to the side of the property providing off street parking.

Tenure

Freehold

Local Authority

South Gloucestershire

Council Tax Band

Band C



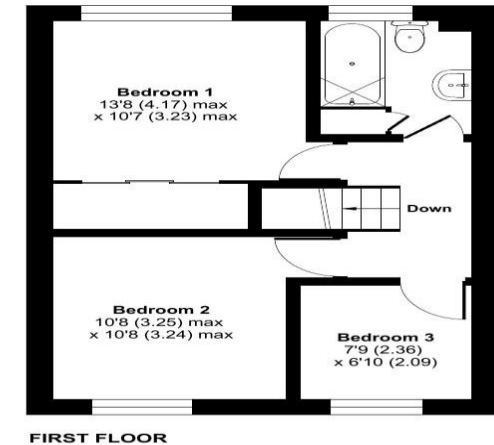
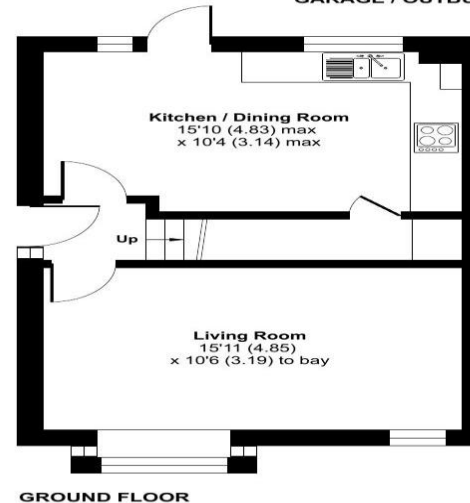
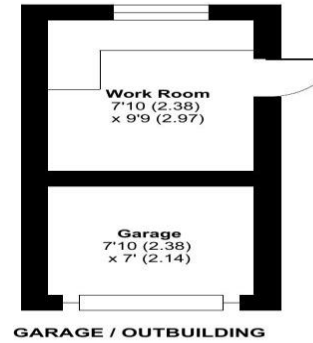
Moor Croft Drive, Longwell Green, Bristol, BS30

Approximate Area = 781 sq ft / 72.5 sq m
 Garage = 55 sq ft / 5.1 sq m
 Outbuilding = 76 sq ft / 7 sq m
 Total = 912 sq ft / 84.6 sq m
 For identification only - Not to scale

[See how to improve this property's energy efficiency.](#)

Score	Energy rating	Current	Potential
92+	A		
81-91	B		
69-80	C	74 C	80 C
55-68	D		
39-54	E		
21-38	F		
1-20	G		

The graph shows this property's current and potential energy rating.



Floor plan produced in accordance with RICS Property Measurement 2nd Edition, Incorporating International Property Measurement Standards (IPMS2 Residential). © nichecom 2026. Produced for Anne James Letting LTD. REF: 1434505

For clarification we wish to inform prospective purchasers that we have prepared these particulars as a general guide. We have not carried out a detailed survey, nor tested the services, appliances and specific fittings. Room sizes are approximate; accordingly they should not be relied upon for carpets and furnishings. Formal notice is also given that all fixtures, carpeting, curtains/blinds and kitchen equipment, whether fitted or not, are deemed removable by the vendors unless specifically agreed.

Anne James Estate Agents Office
 Tel: 0117 9328611

89a Bath Road
 Longwell Green
 BS30 9DF
 info@annejames.co.uk

Bristol