



Westrovia Court
5 Moreton Street, SW1V

CHESTERTONS





A stunning, large apartment featuring three generous double bedrooms, located within a contemporary development in the heart of Westminster. This exceptional property boasts a bright and spacious open-plan reception area seamlessly integrated with a sleek, modern kitchen.

Further accommodation includes a substantial private roof terrace, ideal for entertaining or relaxing with iconic city views. The apartment benefits from a thoughtfully designed, practical layout, floor-to-ceiling windows flooding the space with natural light. Includes premium amenities such as a daytime porter service and secure underground parking. An unparalleled opportunity to enjoy sophisticated city living in one of London's most sought-after locations.

Moreton Street is conveniently situated for the shops, cafes and restaurants of Pimlico, the river Thames and is within close proximity to some of London's most famous landmarks. The nearest transport links can be found at Pimlico station (Victoria line) and Victoria (Victoria, Circle and District lines, mainline station and Gatwick Express).

Please note some of the images have been computer generated.

- Spacious, modern apartment with three large double bedrooms.
- Bright open-plan reception area with a sleek, integrated kitchen and floor-to-ceiling windows
- A substantial private roof terrace offering panoramic views, perfect for entertaining or relaxing
- Benefits include 24-hour concierge service, and secure underground parking
- Prime location near Pimlico's shops, cafés, restaurants, the River Thames
- No onward chain

Asking Price £1,650,000

Score	Energy rating	Current	Potential
92+	A		
81-91	B	84 B	84 B
69-80	C		
55-68	D		
39-54	E		
21-38	F		
1-20	G		

Tenure: 125 years commencing on 1 January 2008

Service Charge: £8,376 Per Annum (Including £1,108 to Sinking Fund)

Ground Rent: £295 Per Annum

Local Authority: City Of Westminster

Council Tax Band: G

Chestertons Westminster & Pimlico Sales

105 Wilton Road

London

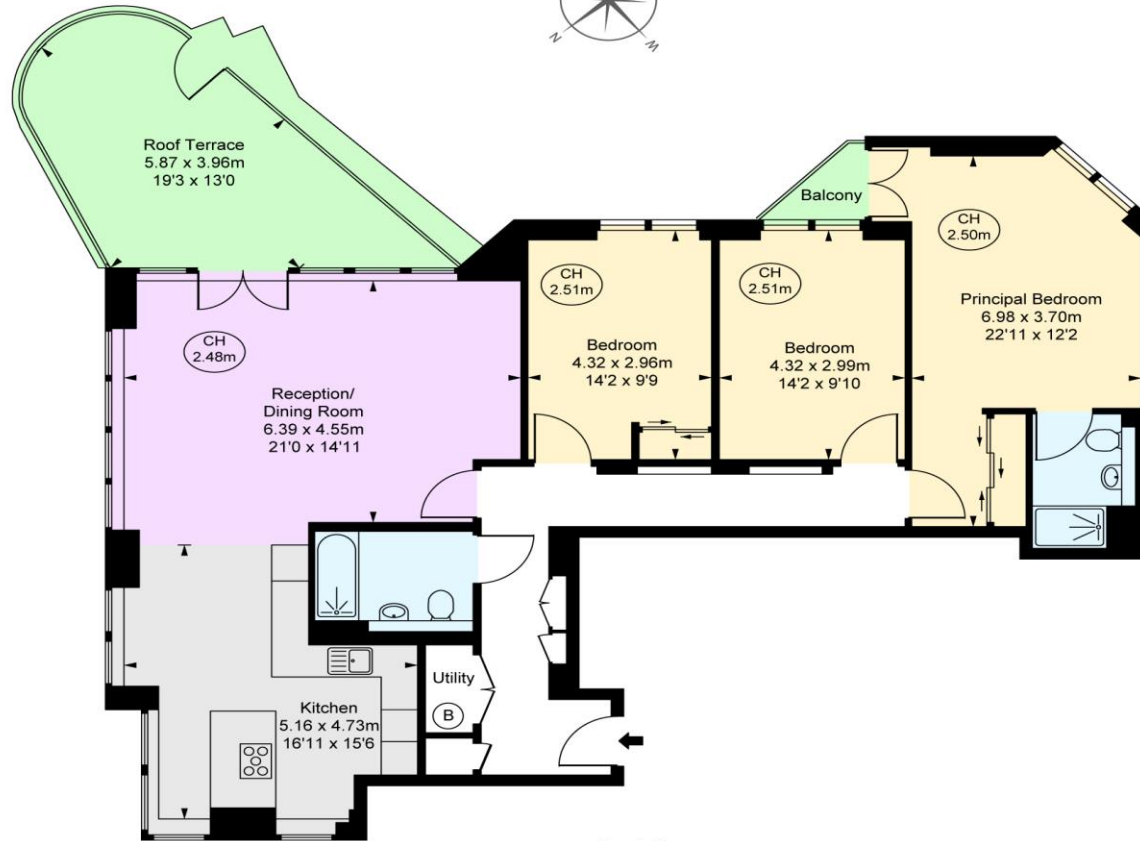
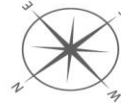
SW1V 1DZ

westminster@chestertons.co.uk

020 3040 8201

chestertons.co.uk

Westrovia Court,
 Moreton Street, SW1V
 Approximate Gross Internal Area
 128.01 sq m / 1,378 sq ft
 (CH = Ceiling Heights)



Fourth Floor



This plan is not to a given scale. A detailed layout plan to scale for valuation is available on request. All measurements and areas are within 1% tolerance and have been prepared in accordance with industry standards as defined in the RICS Code of Measuring Practice
 © Fulham Performance

Chesterton UK Services Limited trading as Chestertons for themselves and for the vendor of this property whose agents they are, give notice that (i) these particulars do not constitute any part of an offer or contract, (ii) all statements contained within these particulars are made without responsibility on the part of Chestertons or the vendor, (iii) whilst made in good faith, none of the statements contained within these particulars are to be relied upon as a statement or representation of fact, (iv) any intending purchasers must satisfy themselves by inspection or otherwise as to the correctness of each of the statements contained within these particulars, (v) the vendor does not make or give either Chestertons or any person in their employment any authority to make or give representation or warranty whatsoever in relation to this property. Wide angle lenses may be used. ©Copyright Chestertons | Chesterton UK Services Limited | Registered Office 40 Connaught Street, Hyde Park, London W2 2AB Registered Company Number 05334580.



This paper is
 100% recyclable