



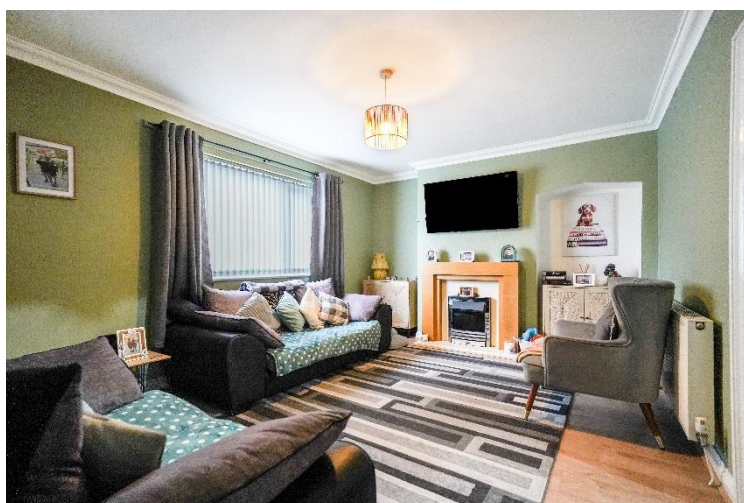
## Tavistock Road

Acocks Green, Birmingham

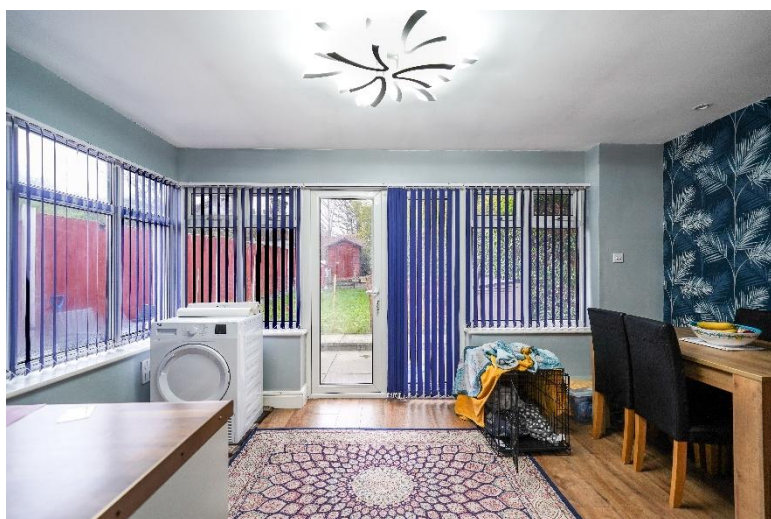
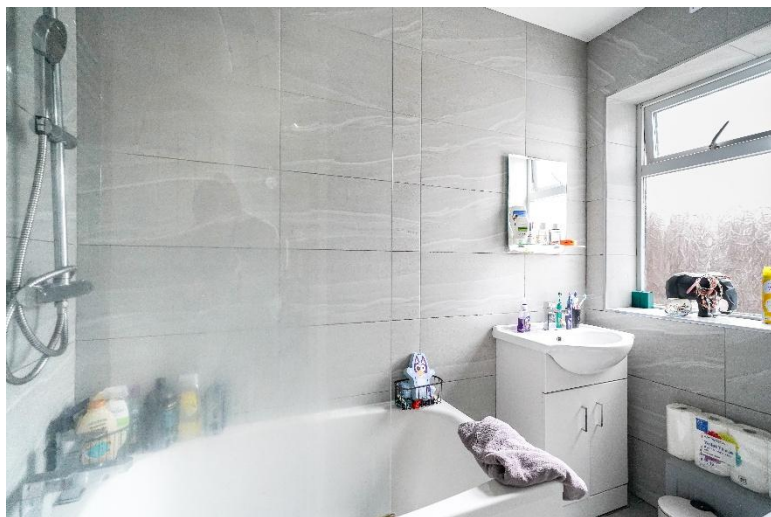
- An Extended Three Bedroom End Of Terrace Property
- Lounge
- Dining Room
- Ground Floor Bathroom

**Offers Over £225,000**

Current EPC Rating 74 (C)  
Current Council Tax Band D







## Property Description

An extended end of terrace property offering three bedrooms, lounge, kitchen, ground floor bathroom, dining room, westerly facing rear garden and off-road parking

### Tenure

We are advised by the vendor that the property is freehold. We would advise all interested parties to obtain verification through their own solicitor or legal representative

EPC supplied by Nigel Hodges  
Current council tax band – A





## Rooms & Measurements

Hallway

Lounge to Front - 3.3m x 4.3m (10'9" x 14'1")

Kitchen to Rear - 2.1m x 2.2m (6'10" x 7'2")

Ground Floor Bathroom to Rear - 1.2m x 2.1m (3'11" x 6'10")

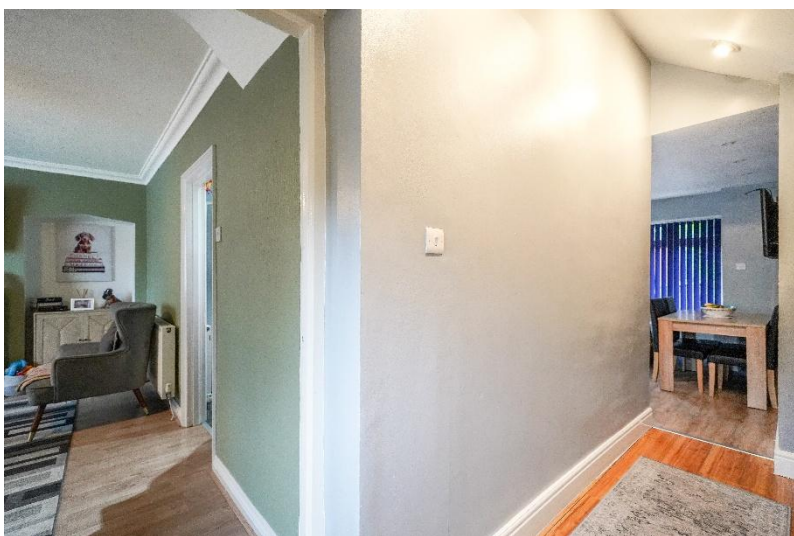
Dining Room to Rear - 4.1m x 2.9m (13'5" x 9'6")

Bedroom One to Rear - 3.7m x 2.5m (12'1" x 8'2")

Bedroom Two to Front - 2.3m x 3.1m (7'6" x 10'2")

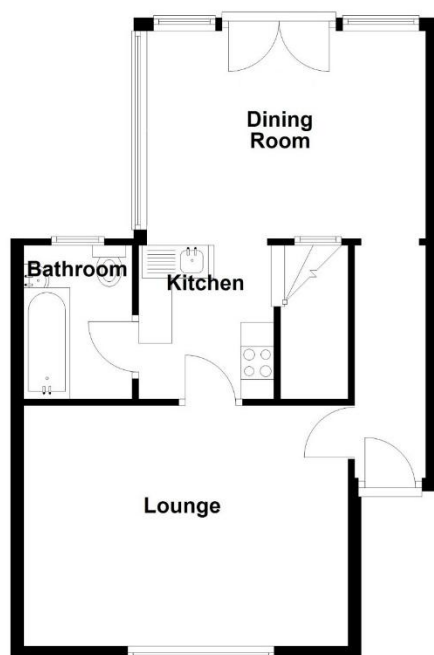
Bedroom Three to Rear - 2.1m x 2.2m (6'10" x 7'2")





### Ground Floor

Approx. 53.6 sq. metres (577.1 sq. feet)

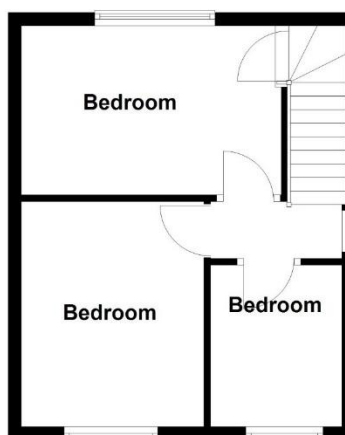


Total area: approx. 83.0 sq. metres

(893.9 sq. feet)

### First Floor

Approx. 29.4 sq. metres (316.7 sq. feet)



316 Stratford Road  
Shirley  
Solihull  
B90 3DN

[www.smart-homes.co.uk](http://www.smart-homes.co.uk)  
0121 744 4144

Agents Note: Whilst every care has been taken to prepare these particulars, they are for guidance purposes only. We believe all information to be correct from the day of marketing however, we advise and recommend that your conveyancer and or surveyor verifies all information supplied. All measurements are approximate are for general guidance purposes only and whilst every care has been taken to ensure their accuracy, they should not be relied upon and potential buyers are advised to recheck the measurements.