





4 Sycamore Road Lindow Court Park

Mobberley, Knutsford

Charming 3-bed park home in Lindow Court Park for over 45s. Spacious open-plan living, modern kitchen, double glazing, attractive gardens, shed, and pet-friendly. Rural setting near Wilmslow town centre.

Council Tax band: A

Tenure: Leasehold

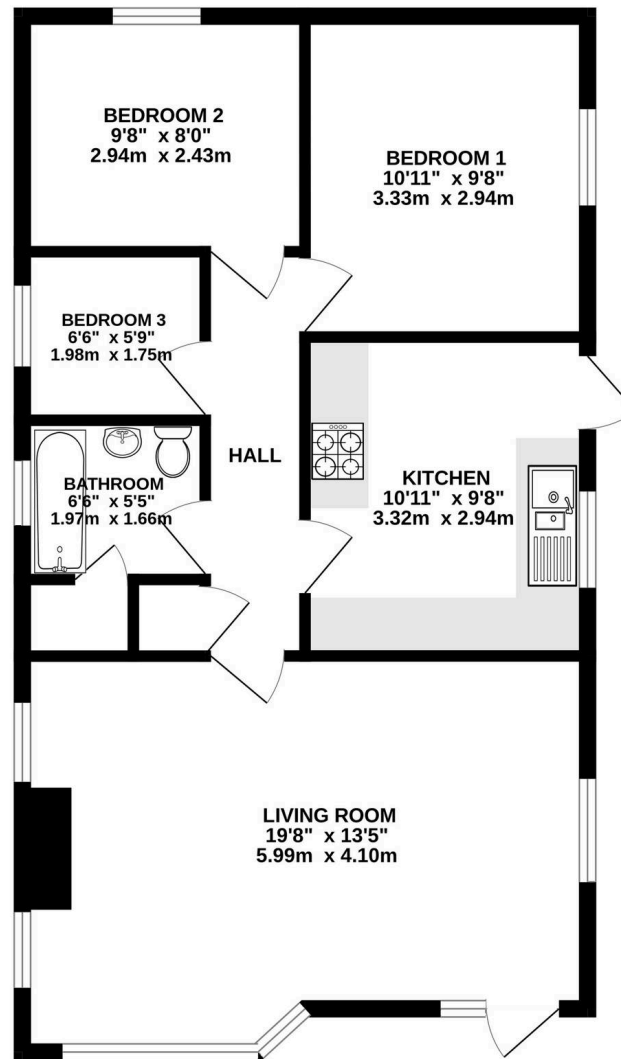
EPC Energy Efficiency Rating: F

EPC Environmental Impact Rating: E

- Detached three-bedroom park home offering an ideal blend of space, privacy, and practicality.
- Located within the sought-after Lindow Court Park, exclusively for residents aged 45 and over.
- Set in ten acres of beautifully maintained grounds, close to Wilmslow, Mobberley, Knutsford, and Altrincham.
- Stylishly updated and presented in lovely condition — ready to move into and enjoy.
- Features a spacious open-plan living/dining area, modern fitted kitchen, two double bedrooms plus study/single, and a refitted three-piece bathroom.
- Benefits include full double glazing, gas combination boiler, attractive gardens with mature planting, garden shed, and a pet-friendly community.



685 sq.ft. (63.6 sq.m.) approx.



TOTAL FLOOR AREA : 685 sq.ft. (63.6 sq.m.) approx.

Whilst every attempt has been made to ensure the accuracy of the floorplan contained here, measurements of doors, windows, rooms and any other items are approximate and no responsibility is taken for any error, omission or mis-statement. This plan is for illustrative purposes only and should be used as such by any prospective purchaser. The services, systems and appliances shown have not been tested and no guarantee as to their operability or efficiency can be given.
Made with Metropix ©2025



Stuart Rushton & Company

Stuart Rushton & Co, 35 King Street – WA16 6DW

01565 757000

enquiries@srushton.co.uk

www.srushton.co.uk



**Stuart
Rushton**
& COMPANY

We are not authorised to make or give any representations or warranties in relation to the property either here or elsewhere. We assume no responsibility for any statement that may be made in these particulars, and they do not form part of any offer or contract and must not be relied upon as statements or representation of fact. Any areas, measurements or distances are approximate. The text, photographs and plans are for guidance only. Importantly, it should not be assumed that the property has all necessary planning, building regulations or other consents and we have not tested any services, equipment or facilities. Purchasers must satisfy themselves by inspection or otherwise.