



Alma Grove, SE1

£875,000

A beautifully presented, semi-detached freehold house, with west-facing garden, a dual aspect double reception room, a large kitchen-diner, extensive extension potential on both sides and to the rear STPP, two double bedrooms and a very generous family bathroom.

Alma Grove is a highly desirable tree lined street, enviably located in the heart of the Thorburn Square Conservation area. This peaceful residential setting offers a village-like atmosphere, nearby to Bermondsey Street, Shad Thames, London Bridge and the South Bank, with numerous cafés, restaurants and amenities on your doorstep.

Features

- Two Storey Freehold House
- Two Double Bedrooms
- Large Kitchen-Diner
- Double Reception Room
- West-facing Garden
- Extension Potential STPP



Alma Grove, SE1

This charming semi-detached freehold house has been thoughtfully maintained and beautifully presented throughout, blending period character with a bright and welcoming atmosphere. High ceilings, elegant sash windows and a dual-aspect layout allow natural light to pour into the principal living spaces, while hardwood flooring and attractive feature fireplaces add warmth and timeless appeal.

The double reception room offers a wonderful sense of space, creating an ideal setting for both everyday living and entertaining. To the rear, a generous kitchen-diner serves as the heart of the home, opening onto a delightful west-facing garden.

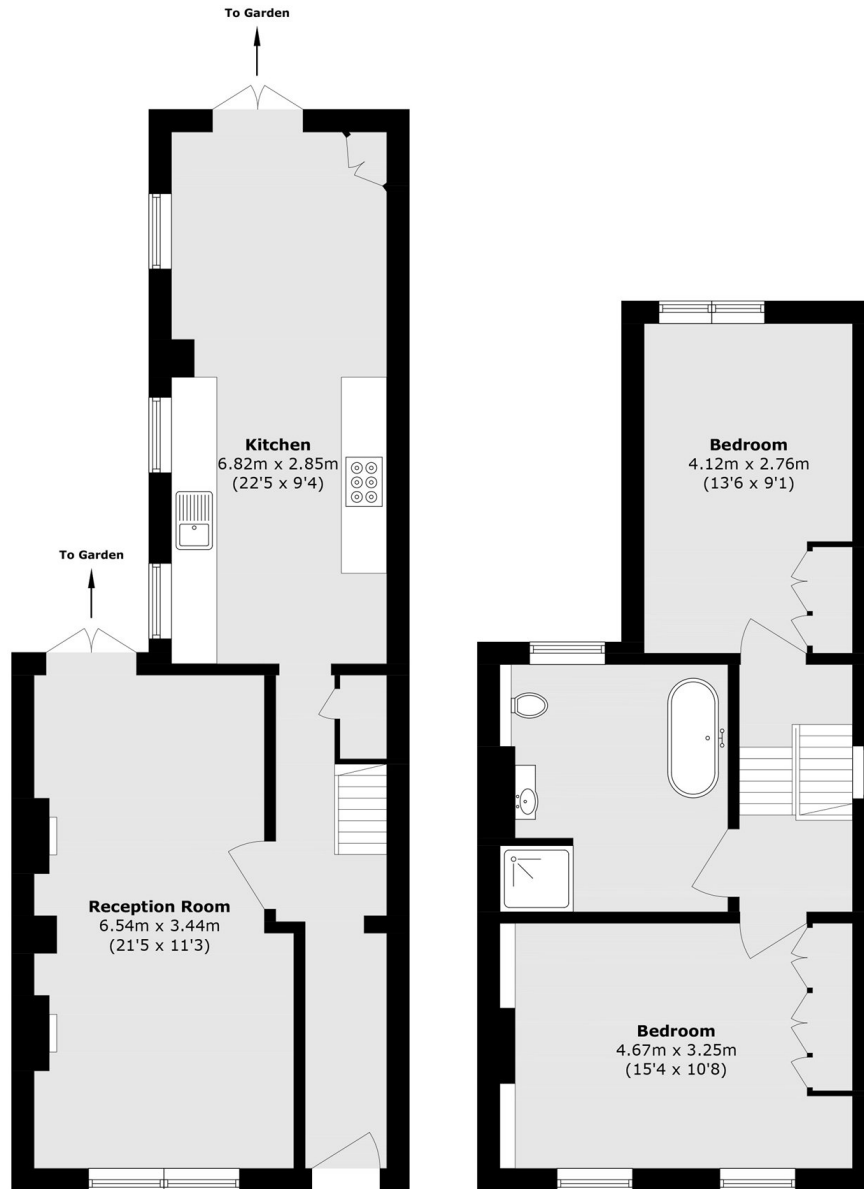
A very private oasis, the outdoor space combines decked and paved areas to create distinct zones for dining, relaxing and enjoying the afternoon and evening sunshine. The seamless connection between the house and garden enhances the feeling of openness and makes the property particularly enjoyable during the warmer months.

Upstairs, two spacious double bedrooms are complemented by an exceptionally large family bathroom. The property's semi-detached position provides valuable scope for substantial extension to the side and rear, subject to the usual permissions, offering an exciting opportunity to increase both living space and long-term value.

Combining character, natural light and significant potential, this is a home that can be enjoyed immediately while offering considerable possibilities for the future.



Alma Grove, London, SE1



First Floor

Second Floor

Total area (approx.): 94.7 sq. m (1019.4 sq. ft)