



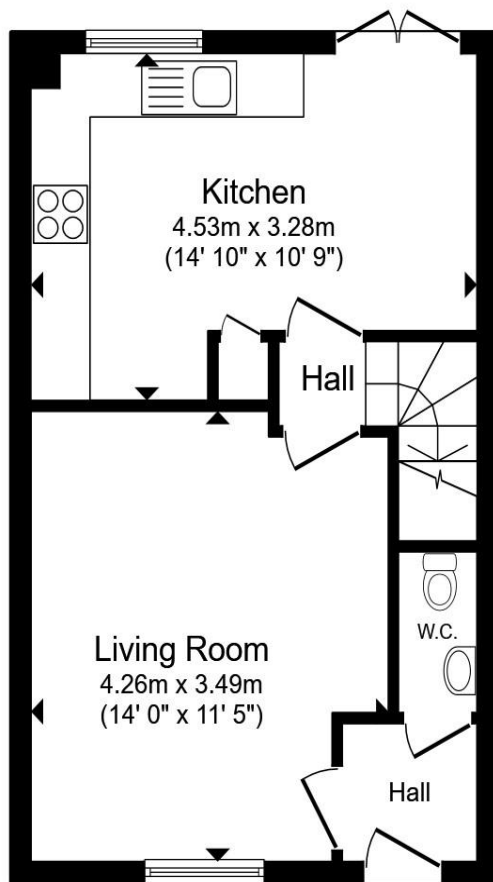
Spring Close, West Bridgford Nottingham NG2 7YR

welcome to

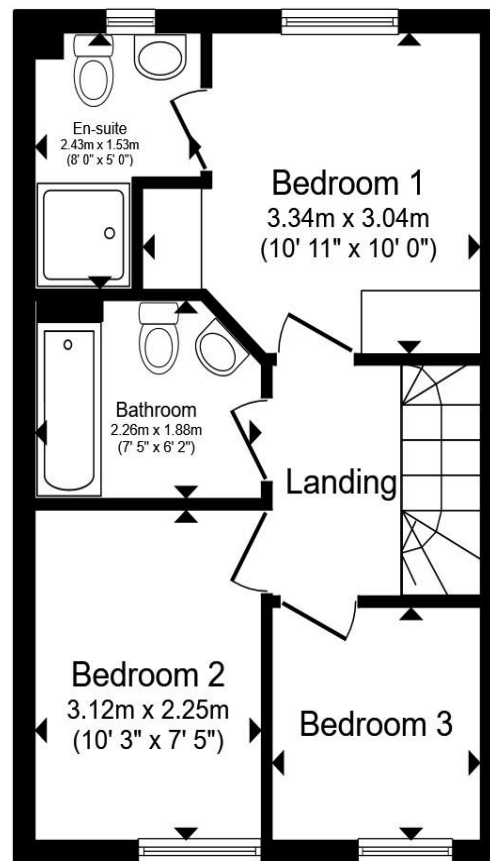
Spring Close, West Bridgford Nottingham

This beautifully presented three-bedroom semi-detached house is ready to move into. Located in a quiet neighbourhood, it is conveniently close to a range of local amenities, excellent schools, and commuting links. CALL US TODAY TO BOOK A VIEWING!





Ground Floor



First Floor

Total floor area 69.2 m² (745 sq.ft.) approx

This floor plan is for illustrative purposes only. It is not drawn to scale. Any measurements, floor areas (including any total floor area), openings and orientation are approximate. No details are guaranteed, they cannot be relied upon for any purpose and they do not form part of any agreement. No liability is taken for any error, omission or misstatement. A party must rely upon its own inspection(s). Powered by www.propertybox.io

Entrance Hall

Cloakroom

Living Room

14' x 11' 5" (4.27m x 3.48m)

Kitchen

14' 10" x 10' 9" (4.52m x 3.28m)

Landing

Bedroom One

10' 11" x 10' (3.33m x 3.05m)

Ensuite

Bedroom Two

10' 3" x 7' 5" (3.12m x 2.26m)

Bedroom Three

7' 3" x 6' 9" (2.21m x 2.06m)

Bathroom

External

welcome to

Spring Close, West Bridgford Nottingham

- THREE BEDROOM SEMI DETACHED HOUSE
- IMMACULATE THROUGHOUT
- MAIN BEDROOM WITH ENSUITE
- SPACIOUS REAR GARDEN
- HIGHLY DESIRED LOCATION

Tenure: Freehold EPC Rating: B
Council Tax Band: C

offers over
£335,000



Please note the marker reflects the
postcode not the actual property

view this property online williamhbrown.co.uk/Property/WBF102777



Property Ref:
WBF102777 - 0004

1. MONEY LAUNDERING REGULATIONS Intending purchasers will be asked to produce identification documentation at a later stage and we would ask for your co-operation in order that there is no delay in agreeing the sale. 2. These particulars do not constitute part or all of an offer or contract. 3. The measurements indicated are supplied for guidance only and as such must be considered incorrect. Potential buyers are advised to recheck measurements before committing to any expense. 4. We have not tested any apparatus, equipment, fixtures or services and it is in the buyers interest to check the working condition of any appliances. 5. Where an EPC, or a Home Report (Scotland only) is held for this property, it is available for inspection at the branch by appointment. If you require a printed version of a Home Report, you will need to pay a reasonable production charge reflecting printing and other costs. 6. We are not able to offer an opinion either written or verbal on the content of these reports and this must be obtained from your legal representative. 7. Whilst we take care in preparing these reports, a buyer should ensure that his/her legal representative confirms as soon as possible all matters relating to title including the extent and boundaries of the property and other important matters before exchange of contracts.

William H Brown Corp is a trading name of Sequence (UK) Limited which is registered in England and Wales under company number 4268443, Registered Office is Cumbria House, 16-20 Hockliffe Street, Leighton Buzzard, Bedfordshire, LU7 1GN. VAT Registration Number is 500 2481 05.

 **william h brown**
Incorporating
**Porter
Glenny**



01159 819828



westbridgford@williamhbrown.co.uk



Rossell House 13 Tudor Square, West
Bridgford, NOTTINGHAM, Nottinghamshire,



williamhbrown.co.uk