



A five bedroom detached family home in a gated development
Batchworth Lane, Northwood, HA6 3HE

ROBSONS

Asking Price: £3,950 pcm

A five bedroom detached family home in a gated development

Batchworth Lane, Northwood, HA6 3HE

• ENTRANCE HALL • THREE RECEPTION ROOMS • KITCHEN & SEPARATE UTILITY ROOM • CLOAKROOM • MAIN BEDROOM WITH WALK IN WARDROBE AND ENSUITE • FOUR FURTHER BEDROOMS ONE WITH AN ENSUITE • FAMILY BATHROOM • REAR GARDEN • DOUBLE GARAGE • LARGE DRIVEWAY • UNFURNISHED

Description

An exceptional five-bedroom, three-bathroom family home situated within a highly sought after gated development in Northwood. Offering a spacious layout, the property features three well-proportioned reception rooms, a fitted kitchen with utility and a guest W.C. The first floor comprises five generously sized bedrooms, including master suite and a second bedroom, both of which are complete with en-suite bathrooms. Additionally, there is a family bathroom serving the remaining bedrooms. Externally, is arear garden with a patio area, a large front driveway providing parking for more than three vehicles, and a double garage offers further storage and parking options.

** An advance reservation payment of one weeks rent is required to secure

Location

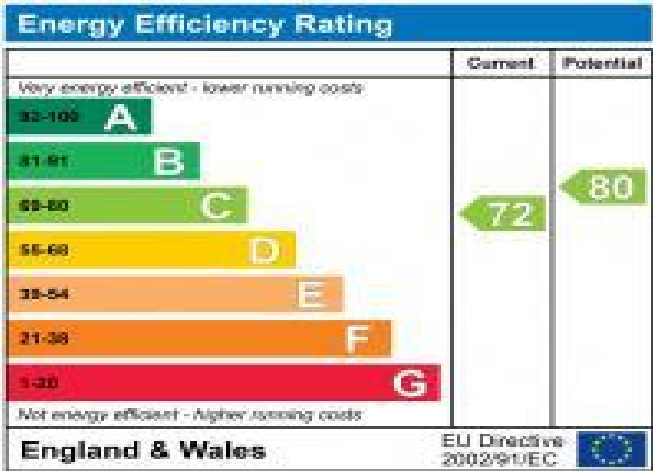
Northwood provides a range of shopping facilities including a Waitrose supermarket, a variety of restaurants and other amenities with the Metropolitan Line station providing access to Baker Street and the City. There is a plethora of state and private schooling together with a wide choice of recreational facilities, which include golf courses and fitness centres. The M1, M40 and M25 motorways are also accessible.



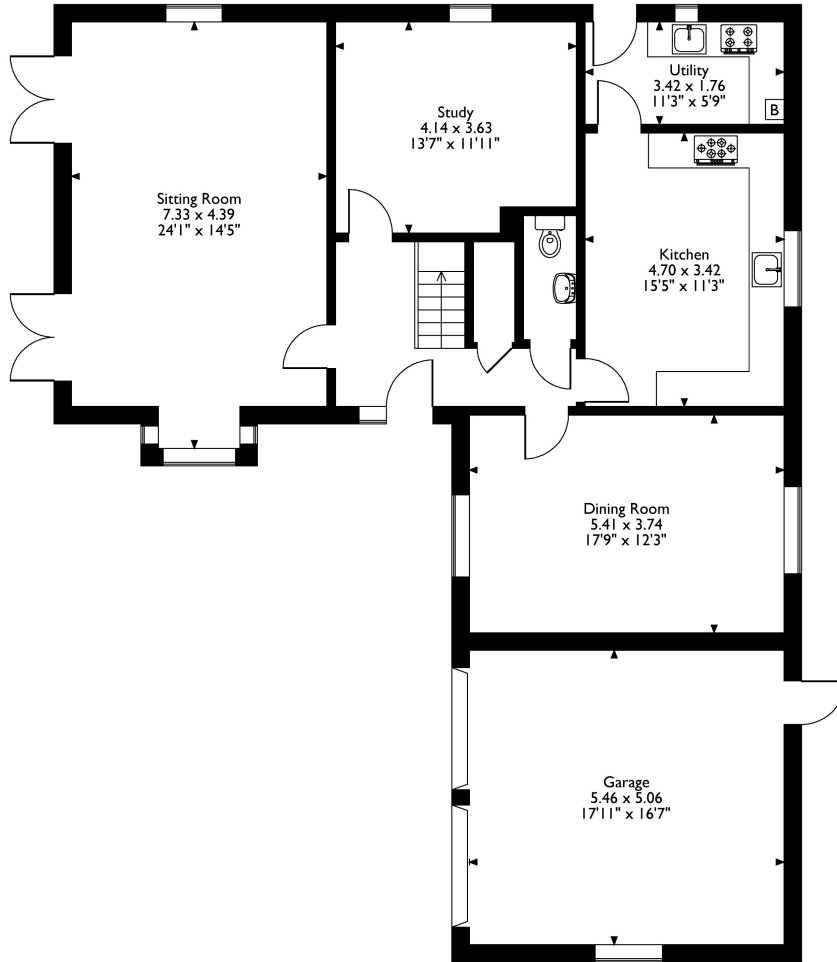


Additional Information

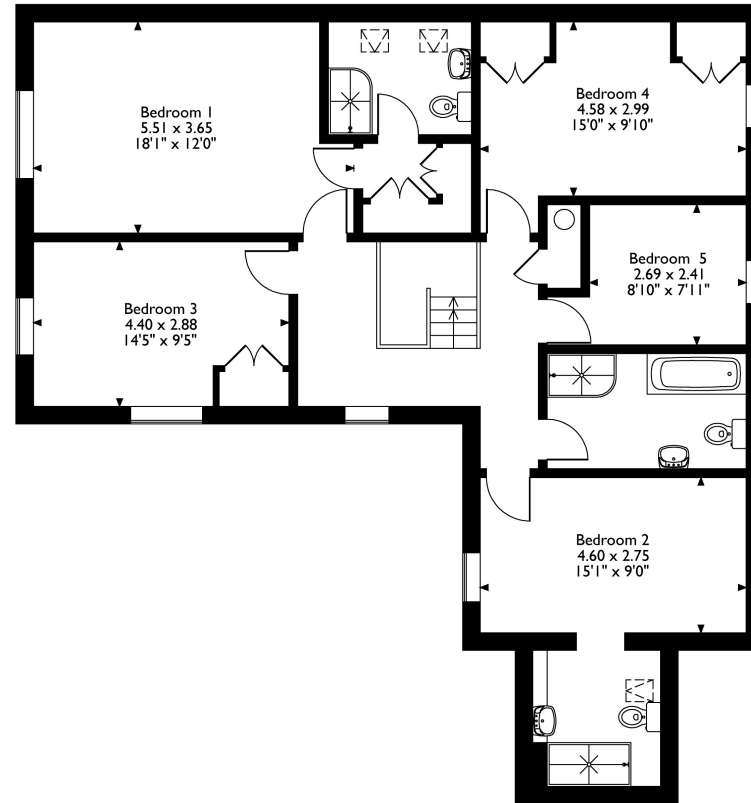
- Local Authority: Three Rivers
- Council Tax Band: G
- Deposit Amount: £4,557.00
- Reservation Payment: One weeks rent
- Energy Efficiency Rating: Band C
- Available Date: 10/08/2026



Portland Heights, Batchworth Lane, Northwood, HA6 3HE
 Approximate Gross Internal Area
 Main House = 208 Sq M/2239 Sq Ft
 Garage = 27 Sq M/291 Sq Ft
 Total = 235 Sq M/2530 Sq Ft



Ground Floor



First Floor

Please note that the location of doors, windows and other items are approximate and this floorplan is to be used for illustrative purposes only. Unauthorized reproduction is prohibited.



REGISTERED OFFICE 2-4 PACKHORSE ROAD, GERRARDS CROSS, BUCKINGHAMSHIRE, ENGLAND, SL9 7QE. COMPANY NO. 07557114. VAT NO. GB211239453