



Goose Gate, Nottingham
£850 PCM

 **Comfort**
Estates



Goose Gate

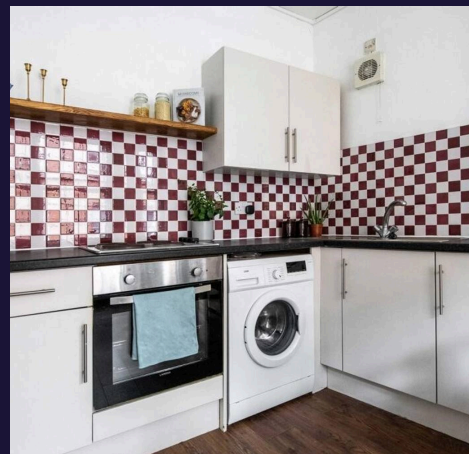
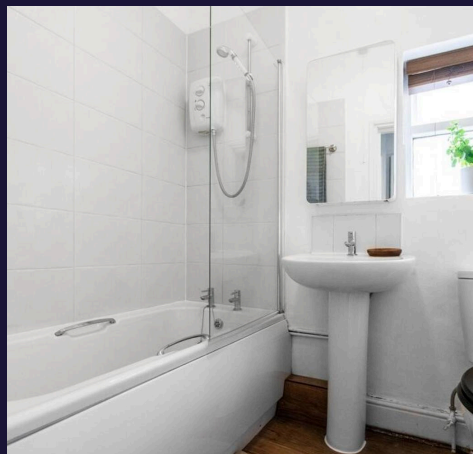
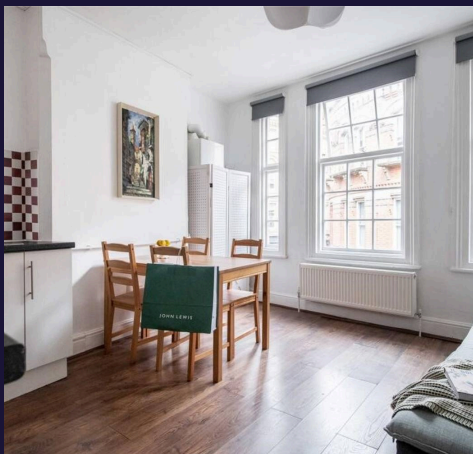
Nottingham

Comfort Estates are proud to present this recently redecorated, one bedroom, fully furnished apartment located in Hockley, Nottingham City Centre.

The property is comprised of a double bedroom, modern bathroom with shower over the bath and a spacious open plan living area/kitchen which includes fridge/freezer, oven, electric hob and washing machine. The large windows allow plenty of light to fill the room and provide views of the vibrant area of Hockley.

Ideally located in an area of the city centre which has plenty of shops, bars and restaurants, this property is perfect for those seeking City Centre living. There are also numerous transport links within walking distance including Nottingham Train Station.

Available from the 7th August, contact Comfort Estates to book your viewing today.





Open plan Kitchen/Lounge

13' 0" x 12' 10" (3.97m x 3.90m)

Lovely open plan kitchen diner and lounge with large windows overlooking Goose Gate. The kitchen area benefits from integrated appliances (fridge freezer, washer dryer, oven and electric hob) and wooden base and wall cabinets with a decorative shelving area. Laminate wood effect floor runs throughout the room and it is furnished with sofa, table and chairs.

Bedroom

11' 2" x 9' 10" (3.40m x 3.00m)

A bright double bedroom which benefits from two large windows which have secondary double glazing – both windows are fitted with blinds. The room has a double bed with mattress, desk, two drawer units, heater, decorative shelving area over the bed and carpet flooring.

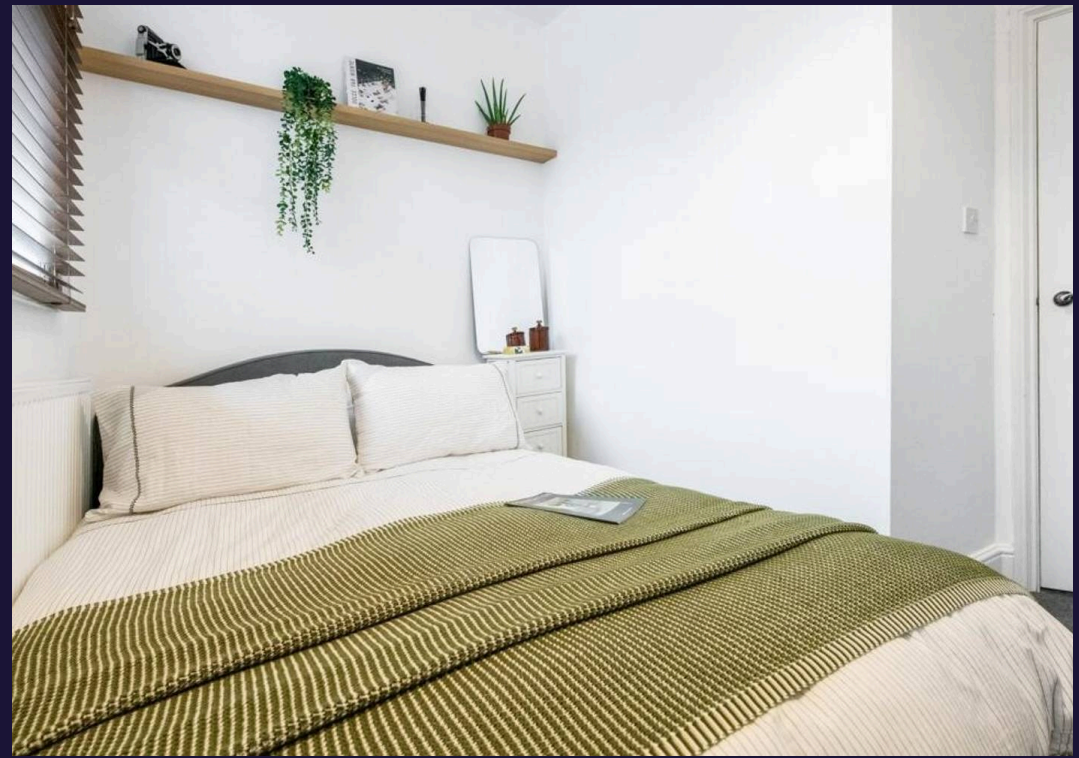
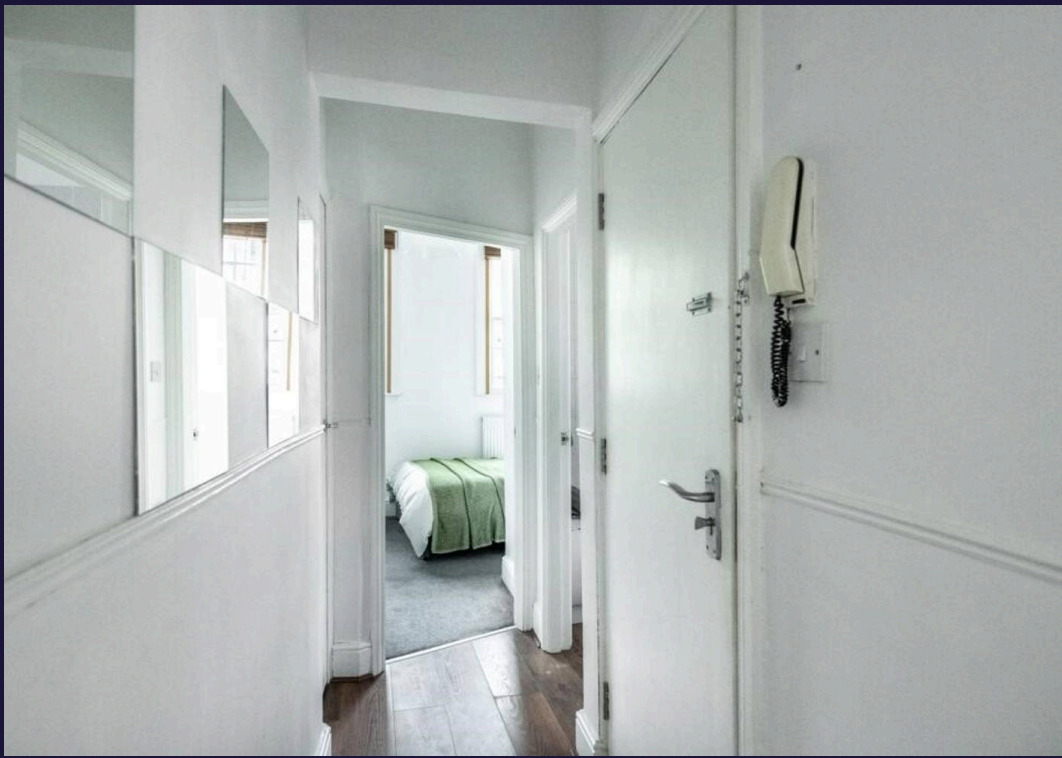
Bathroom

6' 5" x 5' 5" (1.96m x 1.64m)

The main bathroom is fitted with a shower over bath, WC, wash basin, heated towel rail, and a wall-mounted mirror. The room is finished with white wall tiles, painted walls, and lino flooring.

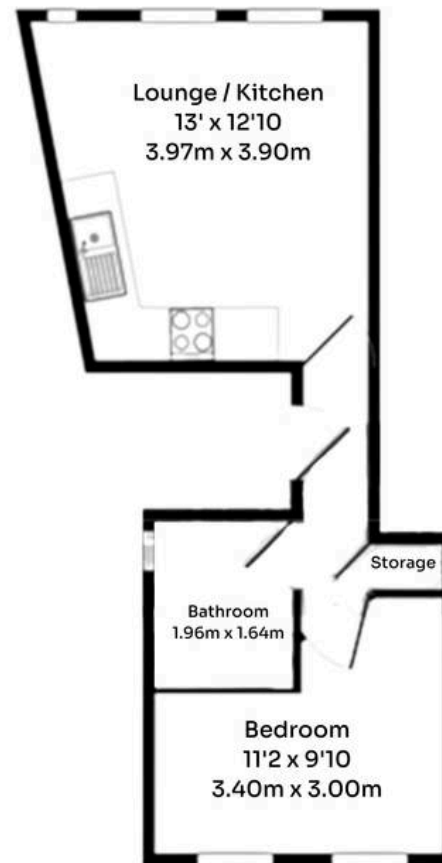
Entrance Hallway

The entrance is neutrally decorated with laminate flooring and provides access to all the rooms within the property. Benefitting from built in storage cupboard and intercom system.





Comfort Estates



Total approx: Floor area 309 SQ FT (28.7 SQ.M.)



Comfort Estates

Comfort Estates, 47 Derby Road - NG1 5AW

0115 933 8997 • info@comfortestates.co.uk • www.comfortestates.co.uk